

Lambourn Chase, Radlett

£1,695 ()

VILLAGE
E S T A T E S



We are pleased to offer for rent this 2 double bedroom terraced home, benefiting from a kitchen, good size reception room leading out onto the garden, upstairs there is a bathroom and two double bedrooms.

Just a short stroll from Battlers Green farm with an array of fine village shops and a 5 minute walk to Radlett's recreation ground which is fantastic for children. There are some fine country walks on the door step and road links are fantastic too with the M1 and M25 a short drive away. The property is also perfectly placed for some of the areas finest schools with St. Johns and Fairfield a short walk away.

Available end of November first week of December!

020 3764 2222
www.village-estates.co.uk



Village Estates
The Corner Shop High Street, Elstree
Herts WD6 3BY

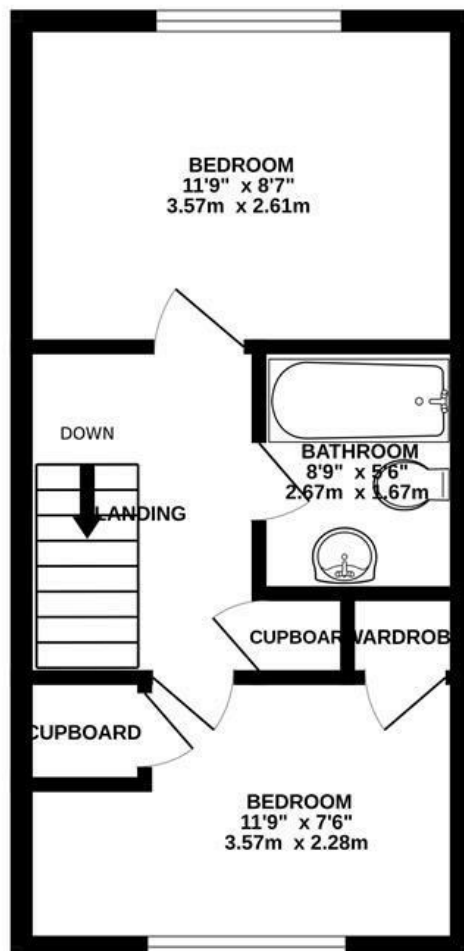
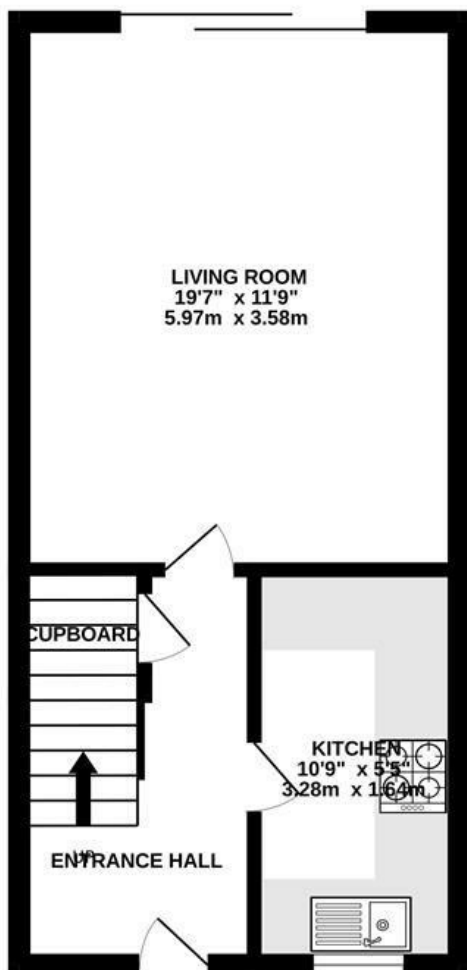
Important Note: These particulars do not form part of any contract. All measurements are approximate and should not be relied upon. All prices quoted are strictly subject to contract.





GROUND FLOOR
288 sq.ft. (26.8 sq.m.) approx.

1ST FLOOR
283 sq.ft. (26.3 sq.m.) approx.




LAMBOURN CHASE, RADLETT, WD7 8JE

TOTAL FLOOR AREA : 571 sq.ft. (53.1 sq.m.) approx.

Whilst every attempt has been made to ensure the accuracy of the floorplan contained here, measurements of doors, windows, rooms and any other items are approximate and no responsibility is taken for any error, omission or mis-statement. This plan is for illustrative purposes only and should be used as such by any prospective purchaser. The services, systems and appliances shown have not been tested and no guarantee as to their operability or efficiency can be given.
Made with Metropix ©2023



| Energy Efficiency Rating | | |
|---|---|-----------|
| | Current | Potential |
| Very energy efficient - lower running costs | | |
| (92 plus) A | | |
| (81-91) B | | |
| (69-80) C | | |
| (55-68) D | | |
| (39-54) E | | |
| (21-38) F | | |
| (1-20) G | | |
| Not energy efficient - higher running costs | | |
| England & Wales | EU Directive 2002/91/EC  | |