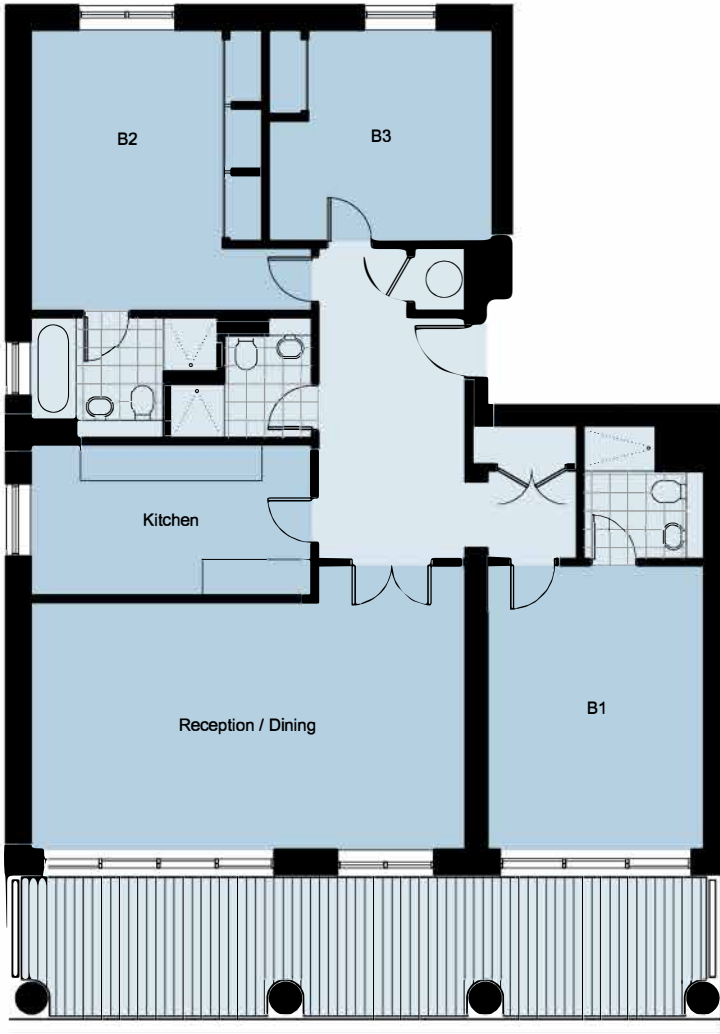


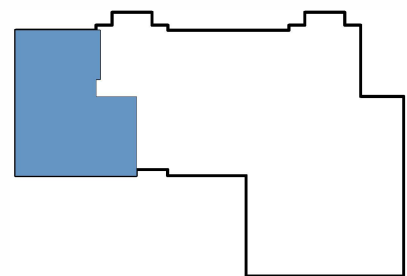
HIGHCLIFFE HOUSE



Ground Floor

Reception room:	7.2 x 4.1m
Bedroom 1:	4.7 x 3.6m
Bedroom 2:	4.65 x 3.2m
Bedroom 3:	3.5 x 3.05m
Terrace:	28m ²

Approximate gross internal area 116 sqm



Key Plan