

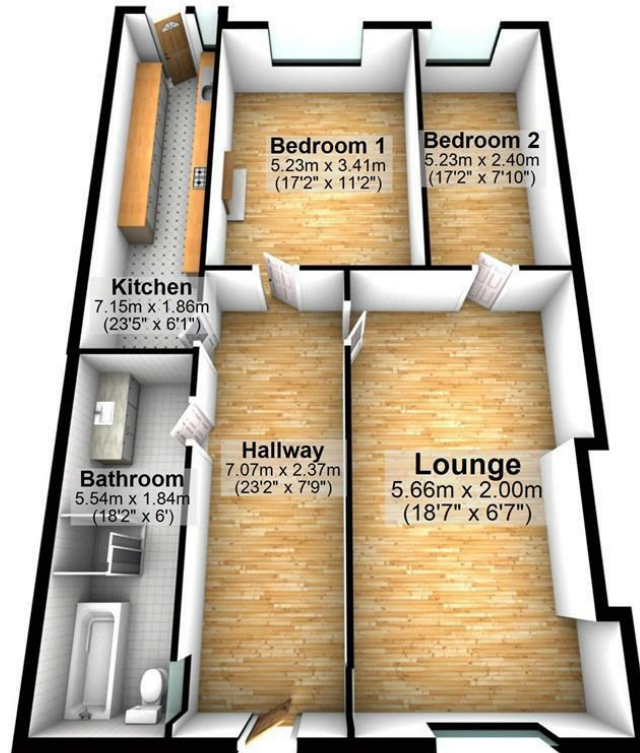


Courtyard Flat, 29 Canynge Square, Clifton, Bristol, BS8 3LB

A charming courtyard flat in the sought after Canynge Square that provides a communal garden square for the use of residents. The unfurnished accommodation has undergone a recent refurbishment and is offered in excellent condition throughout to include a reception, separate galley kitchen finished in a contemporary style with glass work surfaces, two double bedrooms and a large bathroom with a bath and separate shower enclosure. The flat enjoys a private entrance to the front and use of a small courtyard garden.

£1,500 PCM* Fees Apply

Canynges Sq, Clifton



Whilst Hydes of Bristol endeavours to ensure floorplans be as accurate as possible, the measurements of any items within the property (such as windows, doors and walls) are approximate and no responsibility can be taken for any error.
Plan produced using PlanUp.

Energy Efficiency Rating		Current	Potential
Very energy efficient - lower running costs			
(92 plus) A			
(81-91) B			
(69-80) C			
(55-68) D			
(39-54) E			
(21-38) F			
(1-20) G			
Not energy efficient - higher running costs			
England & Wales		70	79
		EU Directive 2002/91/EC	

Environmental Impact (CO ₂) Rating		Current	Potential
Very environmentally friendly - lower CO ₂ emissions			
(92 plus) A			
(81-91) B			
(69-80) C			
(55-68) D			
(39-54) E			
(21-38) F			
(1-20) G			
Not environmentally friendly - higher CO ₂ emissions			
England & Wales		66	79
		EU Directive 2002/91/EC	