

house.

PARTNERSHIP

Moving estate agency on



h.

QUEEN ANNE HOUSE

Westwood Lane
Normandy
Guildford GU3 2JE

With easy access to commuter links, a Grade II listed wing of historic country house enjoying a substantial and secluded garden

- Entrance hall
- Drawing room with balcony
- Dining room
- Kitchen
- 3 bedrooms
- Bedroom 4 / study
- 2 bath / shower rooms
- Gardens of about 0.48 acres
- Double Garage
- Additional Parking



h.



h.



h.



h.



properties perfectly presented

h.



h.



properties perfectly presented



h.



h.

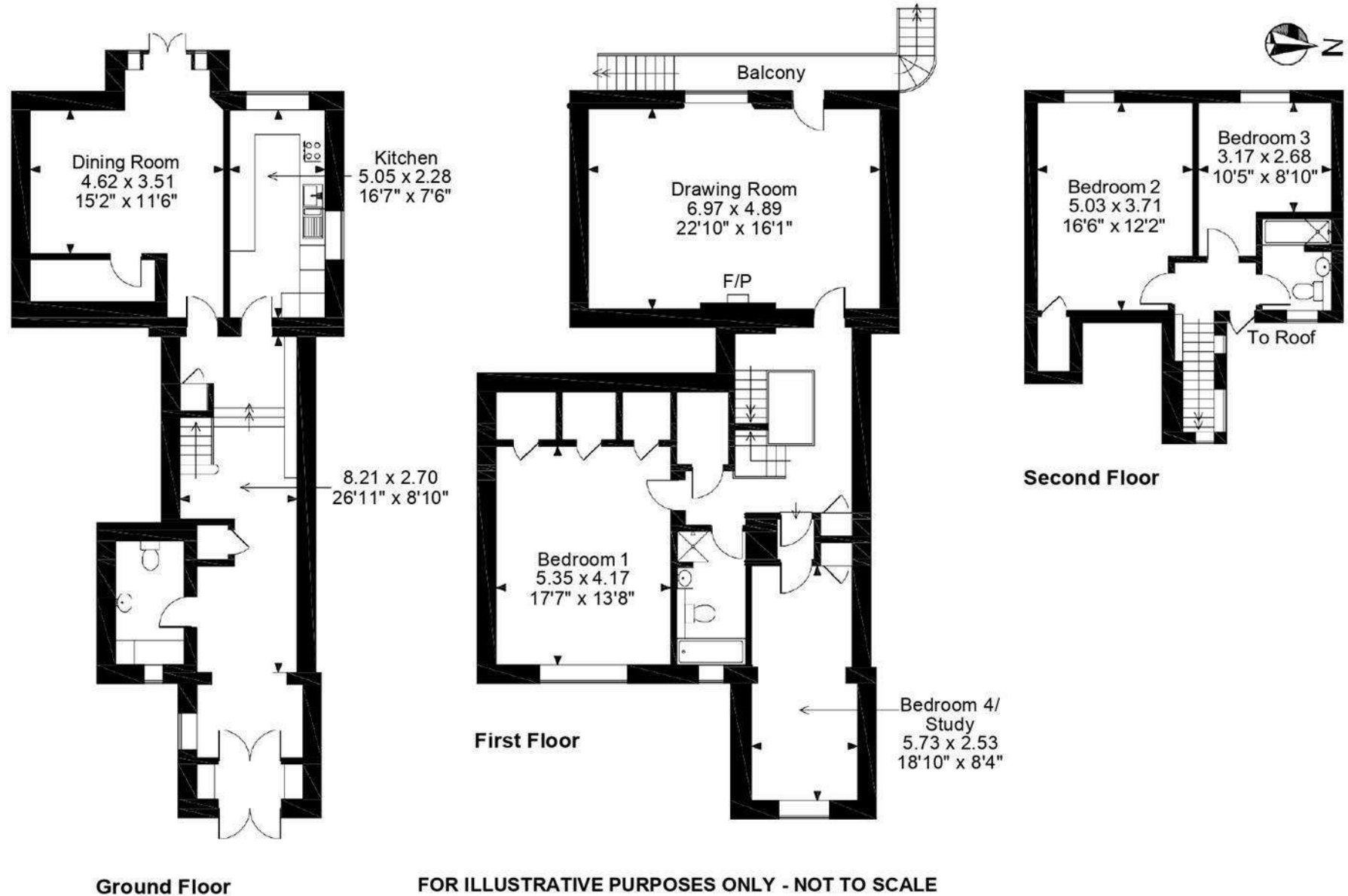


properties perfectly presented



h.

Queen Anne House, Normandy
Main House gross internal area = 2,348 sq ft / 218 sq m



The position & size of doors, windows, appliances and other features are approximate only.

© ehous. Unauthorised reproduction prohibited. Drawing ref. dig/8237508/WFF

h.

HOUSE INFORMATION

Approximate total gross internal area: House
2,348 sq ft / 218 sq m.

Services: All mains services. Gas-fired central
heating.

Local authority: Guildford Borough Council.
Tel: 01483 505050.

Viewing: Strictly by appointment. Tel: 01483
266720.



t. 0800 917 0447

w. housepartnership.co.uk

f in p o