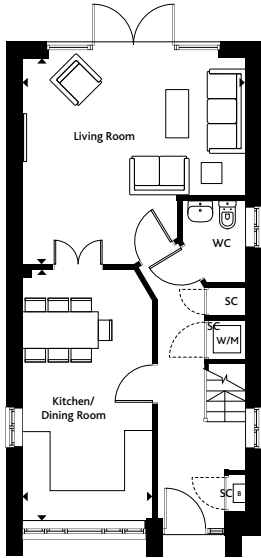
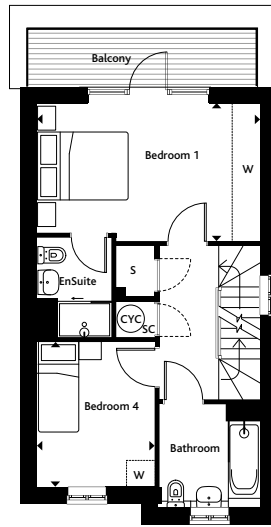


# The Gloucester

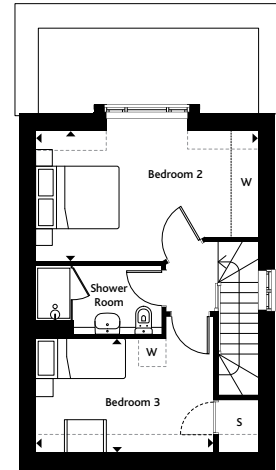
**4 Bedroom House**  
Plot 171



Ground Floor



First Floor



Second Floor

**Ground Floor**

Living Room	4.82m x 4.45m	15'8" x 14'6"
Kitchen/Dining	5.45m x 2.77m	17'9" x 9'1"

**First Floor**

Bedroom 1	4.88m x 2.95m	15'8" x 9'7"
Bedroom 4	3.15m x 2.49m	10'3" x 8'2"

**Second Floor**

Bedroom 2	4.82m x 2.83m	15'8" x 9'3"
Bedroom 3	3.82m x 2.47m	12'5" x 8'1"

**Key**

- SC = Service Cupboard
- S = Store
- W/M = Washing Machine
- CYC = Hot Water Cylinder
- B = Boiler
- [W] = Optional Wardrobe



The dimensions shown are accurate to +/- 50mm, they are not intended to be used for carpet sizes, appliances, spaces or items of furniture. To increase legibility these plans have been scaled differently depending on bedroom type. Please speak to your sales executive for more information.

# Development plan



## Houses

- **The Belgrave**  
3 Bedroom House  
Plots 2, 20, 21, 22, 27, 34, 41, 47, 48,  
49, 55, 57, 58, 61, 62, 65 & 186
- **The Beaumont**  
3 Bedroom House  
Plots 3, 4, 5, 6, 36, 37, 38, 39, 51, 52,  
63, 64, 67, 68, 167 & 168
- **The Eccleston**  
3 Bedroom House  
Plots 13, 14, 17, 19, 23, 30, 31, 32, 35, 40,  
54, 63, 64, 67, 68, 175, 187 & 188
- **The Claremont**  
3 Bedroom House  
Plots 18, 24, 53, 69
- **The Finbury**  
4 Bedroom House  
Plots 25 & 26
- **The Porchester**  
4 Bedroom House  
Plots 1, 28, 29, 33, 50, 56, 66,  
185 & 189
- **The Gloucester**  
4 Bedroom House  
Plots 7, 8, 11, 12, 169, 170, 171, 172,  
173, 190 & 193

## Apartments

- **Merrick House**  
2 Bedroom Apartment  
Plots 9, 10
- **Oakley House**  
1 Bedroom Apartment  
Plots 43, 45
- **Barnsbury House**  
2 Bedroom Apartment  
Plots 15, 16
- **Russell House**  
2 Bedroom Apartment  
Plots 59, 60
- **Harrington House**  
2 Bedroom Apartment  
Plots 42, 44, 46
- **Arundel Place**  
Plots 138, 139, 140, 141, 142, 143,  
144, 145, 146, 147 & 148
- **Wilton House**  
Plots 191 & 192