



Mayford Court, Epsom

Guide Price £450,000

- Stunning first floor apartment
- Immaculate presentation
- 1076 Sq. Ft Victorian conversion
- Unique private position
- Two double bedrooms
- Ensuite & bathroom
- Allocated parking space
- Further visitors parking
- Understairs Storage
- Private Entrance



Occupying arguably one of the best positions within this imposing converted Victorian building, this absolutely stunning and immaculately presented first floor apartment offers approximately 1076 Sq. Ft of beautiful living space, with leafy views from many of the rooms, whilst retaining its privacy.

Accommodation briefly comprises a 19ft x 13ft living/dining room that really has the 'wow' factor and is open plan to a beautiful kitchen which creates the ultimate social and entertaining space, master bedroom with large en-suite, second generous double bedroom and a luxury main bathroom. The finish, presentation and position of the property itself mirrors the superb location and warrants immediate inspection to fully appreciate the unique feeling of privacy it delivers.

Set on the periphery of Horton Country Park the property benefits from easy access to hundreds of acres of ancient

woodland. The many surrounding bridle and cycle paths link directly to the Stamford Green conservation area which enjoys a nature reserve, picturesque green with duck pond and two public houses.

The wealth of character that is provided by the high ceilings and large double glazed sash windows, seamlessly blends with the stylish and contemporary design touches that you may expect with a high end property of this kind. As soon as you step into the incredible living area the quality is immediately evident making this fine apartment one of the very best examples that we have seen.

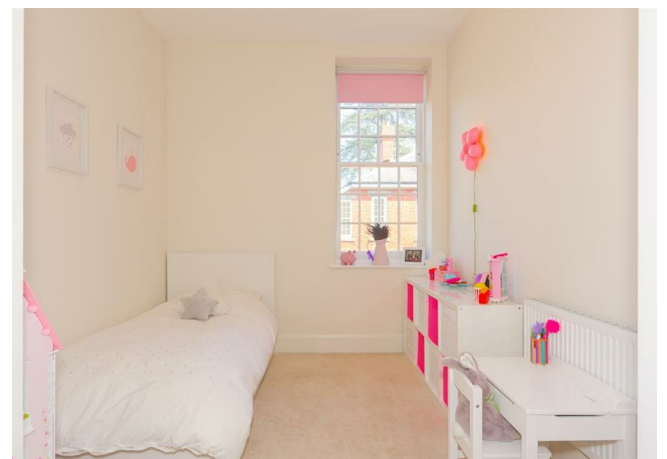
Further noteworthy points to mention include extensive storage with fitted floor to ceiling wardrobes in the master bedroom, allocated parking and the remainder of the NHBC guarantee.

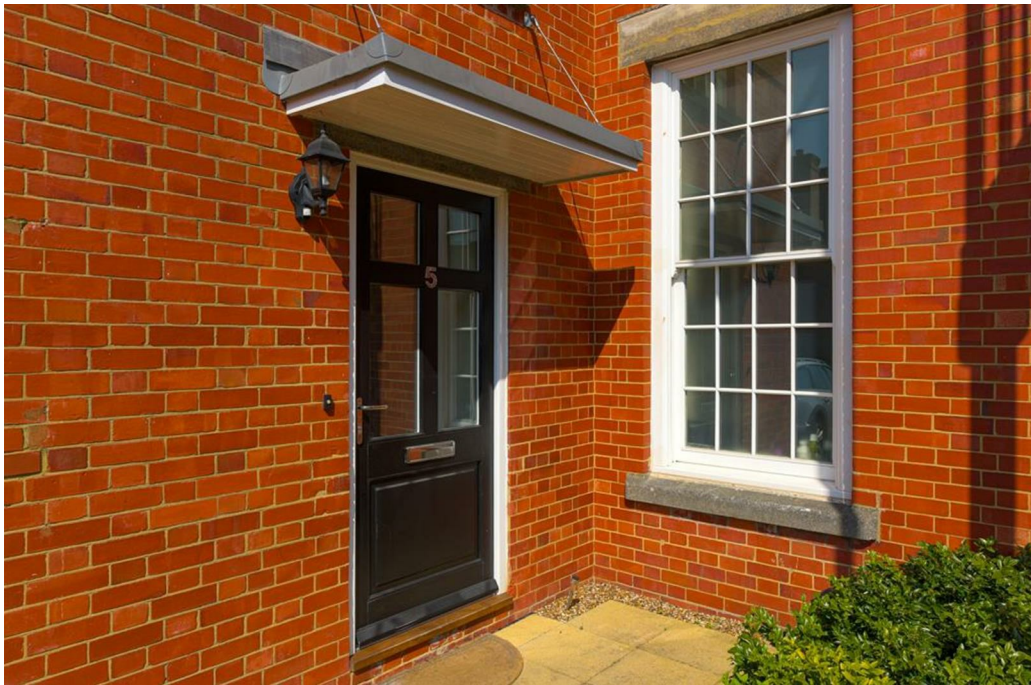
Noble Park is a quiet and well regarded residential

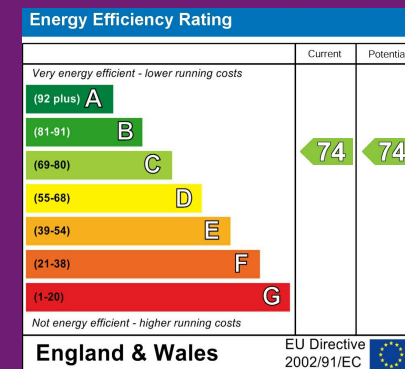
development, ideally located for Horton Golf Club and Horton Country park, enjoying walks/bike rides in a tranquil setting.

Equally convenient for Epsom town centre offering a wide range of facilities which include shops, bars & restaurants, cinema & theatre and close to popular schools. There are excellent transport links with Epsom railway station which provides regular trains to London Waterloo, Victoria & London Bridge. The M25 Junction 9 is about 3 miles drive away with access to both Heathrow and Gatwick airports.

Leasehold







Epsom Office
2 West Street
Epsom, Surrey KT18 7RG
T: 01372 745 850

Ewell Office
220 Chessington Road
West Ewell, Surrey KT19 9XA
T: 020 8394 1234

Stoneleigh Office
62 Stoneleigh Broadway
Stoneleigh, Surrey KT17 2HS
T: 020 8393 9411

Banstead Office
141 High Street Banstead,
Surrey SM7 2NS
T: 01737 333699

the personalagent
sales@thepersonalagent.co.uk | thepersonalagent.co.uk

Please Note: Whilst every attempt has been made to ensure the accuracy of the floorplans contained here, measurements of doors, windows and room areas are approximate and no responsibility is taken for any error, omission or mis-statement. These plans are for representation purposes only and should be used as such by and prospective purchaser. The services, systems and appliances listed in the specification have not been tested by The Personal Agent and no guarantee as to their operating ability or their efficiency can be given. All images and text used to advertise our properties are for the sole use of The Personal Agent Ltd.





the personalagent