



# RESIDENTIAL

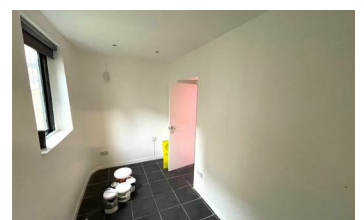
SALES | LETTINGS | PROPERTY MANAGEMENT



## 313 Meltham Road, Huddersfield, HD4 7EX £450 Per Calendar Month



ADM RESIDENTIAL are pleased to market for LET, this commercial unit, situated in this very popular location of Netherton of Huddersfield with busy High Street presence with a densely populated catchment area. The previous business was a former Furniture Upholstery shop, comprise of:- A large showroom with window display, separate office/treatment room, leading to two further rooms and a separate w/c, there is an external outside w.c. This would make a perfect office or a small business with a large amount of opportunity to put your own stamp on here. The accommodation extends to 26ft sq2 and has the benefit of fronted display window. The property is well positioned to attract trade from passing traffic in addition to the local community Please contact the agent to arrange a meeting with the owners today, Tel 01484 644555



- COMMERCIAL LET
- SHOP FRONTAGE
- SHOW ROOM
- IDEAL OFFICE
- POPULARE AREA
- EXTERNAL W/C.

55 Market Street, Milnsbridge, Huddersfield, West Yorkshire, HD3 4HZ  
T: 01484 644555 | E: sales@admresidential.co.uk  
www.admresidential.co.uk

