



RESIDENTIAL

SALES | LETTINGS | PROPERTY MANAGEMENT



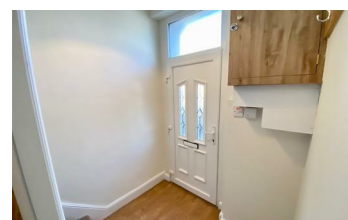
31 Thorncliffe Street, Huddersfield, HD3 3JL

£600 Per Month



LB **NEWLY DECORATED IS THIS CHARMING TWO BEDROOM TERRACE PROPERTY SET WITHIN THE HEART OF LINDLEY'S VILLAGE** ADM Residential now offer *TO LET* this stone built, front terrace property set within the ever popular area of Lindley in Huddersfield. An ideal location for the local schools, all village amenities, bus routes, access to Huddersfield Town Centre and within easy access to the M62 Motorway Networks. This property boasts gas central heating, double glazing and finished to a high standard throughout, offering ideal accommodation for the professional tenant. Briefly comprising of: Entrance uPVC door, hallway, open plan living space with modern kitchen. To the first floor landing: two bedrooms, please note the second is a single office and a fully tiled large modern house bathroom suite. Externally the property boasts a small flagged frontage and on street parking. Call ADM Residential today to arrange your viewing! *IDEALLY SUITABLE FOR A SINGLE OCCUPANT*

- TERRACE PROPERTY
- TWO BEDROOMS
- OPEN PLAN LIVING AREA
- NEWLY DECORATED THROUGHOUT
- MODERN KITCHEN & BATHROOM
- ON STREET PARKING



55 Market Street, Milnsbridge, Huddersfield, HD3 4HZ
T: 01484 644555 | E: sales@admresidential.co.uk
www.admresidential.co.uk

