



RESIDENTIAL

SALES | LETTINGS | PROPERTY MANAGEMENT



13 Spring Street, Huddersfield, HD7 6HE

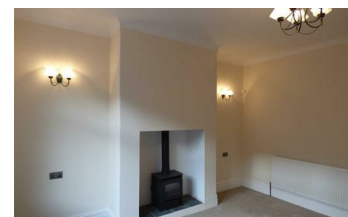
£795 Per Calendar Month



ADM Residential are pleased to offer "FOR LET" this stone built inner terrace property, which is set within easy access to the centre of Marsden village. Offering gas central heating and double glazing throughout with neutral decoration. Internally the accommodation comprises of: hallway, well appointed lounge, cottage style dining kitchen and a useful cellar to the lower ground floor. To the first floor landing there are two good sized bedrooms and a modern house bathroom. The property has a small front garden and a low maintenance garden to the rear. On street parking is available to the front aspect. Call ADM Residential to arrange your viewing appointment!

TENANT CURRENTLY IN SITU

- MODERN TERRACE
- MODERN KITCHEN
- A WALK-IN & BATHROOM
- GARDEN
- LARGE LOUNGE
- TWO BEDROOMS
- MODERN D/KITCHEN



55 Market Street, Milnsbridge, Huddersfield, West Yorkshire, HD3 4HZ
T: 01484 644555 | E: sales@admresidential.co.uk
www.admresidential.co.uk

