



19 Summer Hill, Bristol, BS4 3BE

Chain Free £425,000

- 3D INTERACTIVE TOUR
- Three Storeys
- Modern Kitchen Diner
- Close To Temple Meads
- NO ONWARD CHAIN

- Three DOUBLE Bedrooms
- Light & Airy Sitting Room
- Stylish Upstairs Bathroom
- Pretty Rear Garden
- Energy Rating - D

Charming Victorian Terrace in the Heart of Totterdown

Positioned perfectly between Bath and Wells Road, this delightful Victorian terrace offers a fantastic opportunity for buyers looking to create their perfect home in one of Bristol's most sought-after locations. Set in the vibrant heart of Totterdown, this property is ideal for those wanting to be within walking distance of Temple Meads station, the City Centre, and the independent shops and cafés of Wells Road. Nearby green spaces such as Arnos Vale Cemetery and the picturesque Victoria Park add to the appeal of this well-connected yet characterful neighbourhood.

The accommodation is arranged across three levels, offering excellent flexibility for modern living. On the top floor, you'll find two generous double bedrooms and a stylish bathroom with a sizable attic space ideal for storage. The hall floor features a light & airy sitting room with a fitted Gazco gas fire, and a modern kitchen / breakfast Room with newly fitted kitchen work tops, whilst on the lower ground floor there is a third double bedroom which could also be used as a home office, and a w.c. In addition, the property has been recently redecorated throughout and all the carpets have been replaced.

The back door opens onto raised decking—perfect for alfresco dining. Beyond the deck, steps lead down to a private garden area with a further decked sun patio with bench seating, a great space for entertaining friends & family and offering the chance to create a truly special outdoor space.

Living Room 13'03 x 11'9 max (4.04m x 3.58m max)

Kitchen / Dining Room 13'01 x 10'2 (3.99m x 3.10m)

Bedroom One 13'8 x 9'04 (4.17m x 2.84m)

Bedroom Two 12'11 x 10'00 (3.94m x 3.05m)

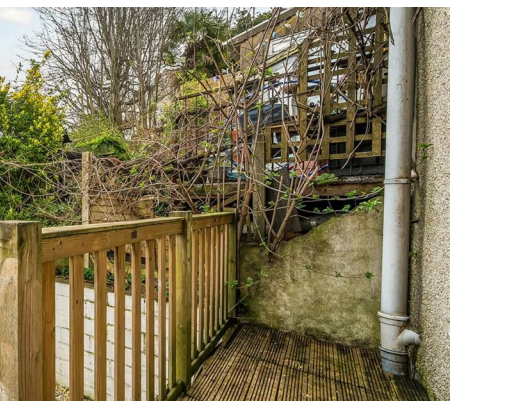
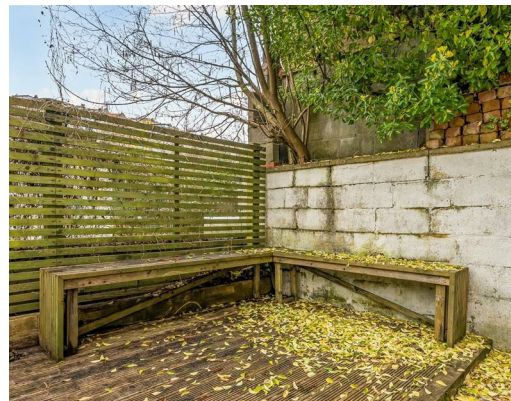
Bedroom Three 12'07 x 9'07 (3.84m x 2.92m)

Bathroom 8'6 x 5'4 (2.59m x 1.63m)

Tenure - Freehold

Council Tax Band - B



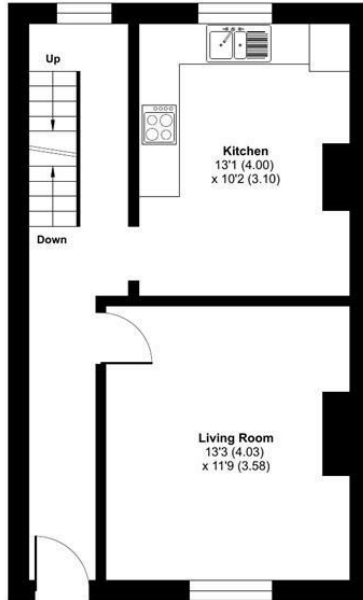


Summer Hill, Totterdown, Bristol, BS4

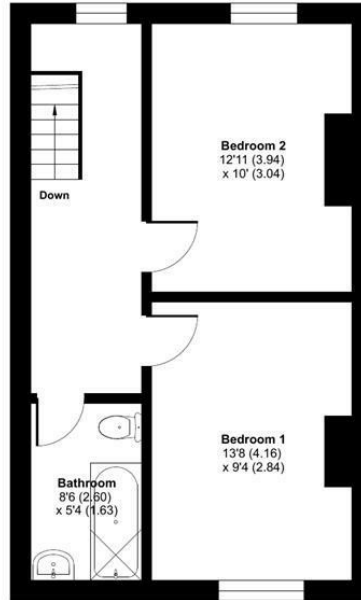
Approximate Area = 1021 sq ft / 94.8 sq m
For identification only - Not to scale



BASEMENT FLOOR



GROUND FLOOR



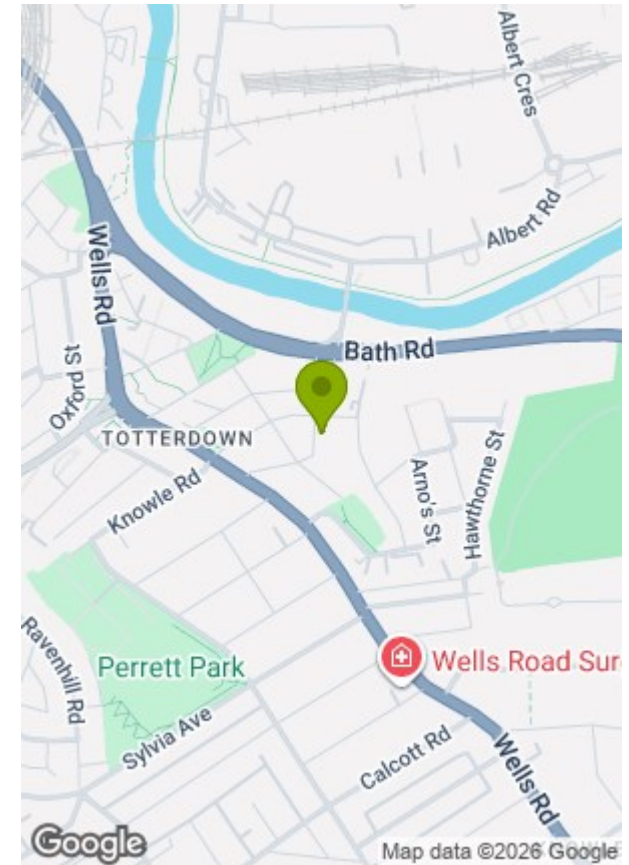
FIRST FLOOR



Floor plan produced in accordance with RICS Property Measurement 2nd Edition, Incorporating International Property Measurement Standards (IPMS2 Residential). Produced for Greenwood's Property Centre. REF: 1425911



GREENWOODS
SALES · LETTINGS · COMMERCIAL



Energy Efficiency Rating		Current	Potential
Very energy efficient - lower running costs			
(92 plus) A			86
(81-91) B			
(69-80) C			
(55-68) D		61	
(39-54) E			
(21-38) F			
(1-20) G			
Not energy efficient - higher running costs			
England & Wales		EU Directive 2002/91/EC	

Environmental Impact (CO ₂) Rating		Current	Potential
Very environmentally friendly - lower CO ₂ emissions			
(92 plus) A			88
(81-91) B			
(69-80) C			
(55-68) D			62
(39-54) E			
(21-38) F			
(1-20) G			
Not environmentally friendly - higher CO ₂ emissions			
England & Wales		EU Directive 2002/91/EC	

These particulars, whilst believed to be accurate are set out as a general outline only for guidance and do not constitute any part of an offer or contract. Intending purchasers should not rely on them as statements of representation of fact, but must satisfy themselves by inspection or otherwise as to their accuracy. No person in this firm's employment has the authority to make or give any representation or warranty in respect of the property.