



**Flat 11 Selway House Frome**

**£975 PCM**



- Second Floor
- Allocated Parking space
- Access to Bus routes
- Two double bedrooms
- Commute to Bath, Bristol, Frome, Wells
- Banes Band B

An immaculately presented second floor flat, that has been freshly decorated throughout.

The flat is spacious with open living dining and kitchen, two double glazed windows.

The flat comes with the added benefit of the white goods, Fridge freezer and washing machine.

Two double bedrooms and a modern contemporary bathroom with a shower over.

Communal entrance both front and back with gives convenient access to the Allocated parking found to the rear.

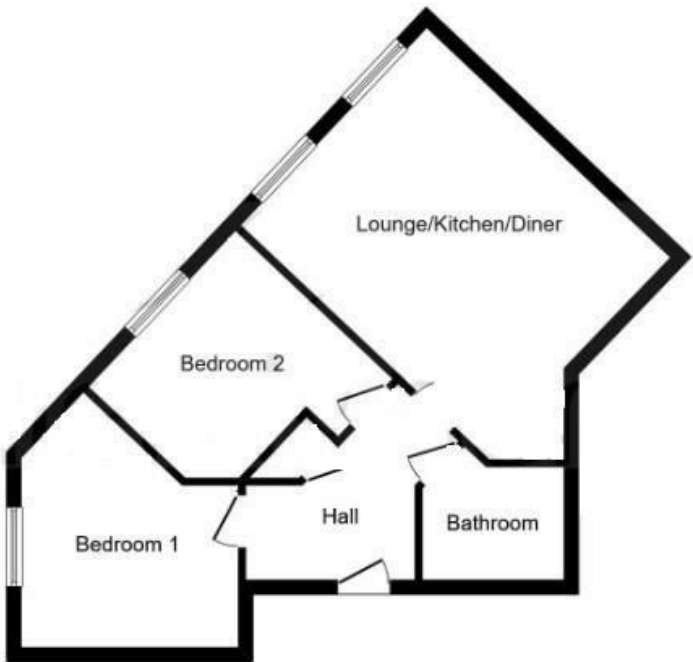
Main Bedroom 11' 9" max x 12' 9" max ( 3.58m max x 3.89m max )  
Spacious double bedroom with double glazed window to the front aspect. Electric heater.

Bedroom Two 10' 5" max x 10' 6" max ( 3.17m max x 3.20m max )  
Double bedroom with double glazed window to the front aspect. Electric heater.

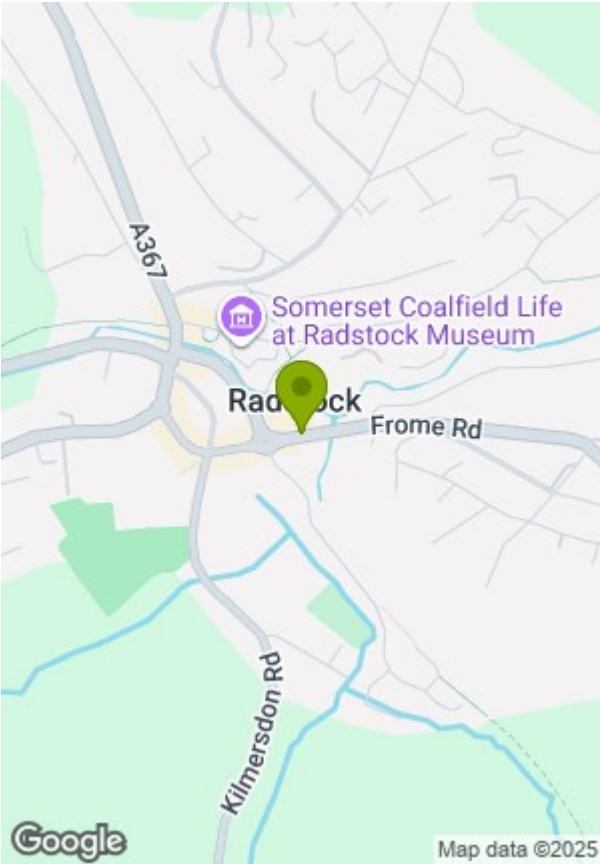
Close to amenities as it is conveniently situated being just 9 miles south west of Bath with excellent regular bus routes providing easy local travel. There is also a wide range of amenities, including shops, restaurants and cafes available within walking distance as well as access into open countryside with accessible cycle routes.







This plan is for illustration purposes only and may not be representative of the property. Plan not to scale.



Energy Efficiency Rating			Environmental Impact (CO <sub>2</sub> ) Rating		
	Current	Potential		Current	Potential
Very energy efficient - lower running costs			Very environmentally friendly - lower CO <sub>2</sub> emissions		
(92 plus) A			(92 plus) A		
(81-91) B			(81-91) B		
(69-80) C			(69-80) C		
(55-68) D			(55-68) D		
(39-54) E			(39-54) E		
(21-38) F			(21-38) F		
(1-20) G			(1-20) G		
Not energy efficient - higher running costs			Not environmentally friendly - higher CO <sub>2</sub> emissions		
England & Wales	EU Directive 2002/91/EC		England & Wales	EU Directive 2002/91/EC	

These particulars, whilst believed to be accurate are set out as a general outline only for guidance and do not constitute any part of an offer or contract. Intending purchasers should not rely on them as statements of representation of fact, but must satisfy themselves by inspection or otherwise as to their accuracy. No person in this firms employment has the authority to make or give any representation or warranty in respect of the property.