



21 Holly Walk, Radstock , Somerset BA3

£850 PCM

- Two Bedrooms
- Enclosed Garden
- Banes Band B

TWO BEDROOMS ** GARDEN AREA.

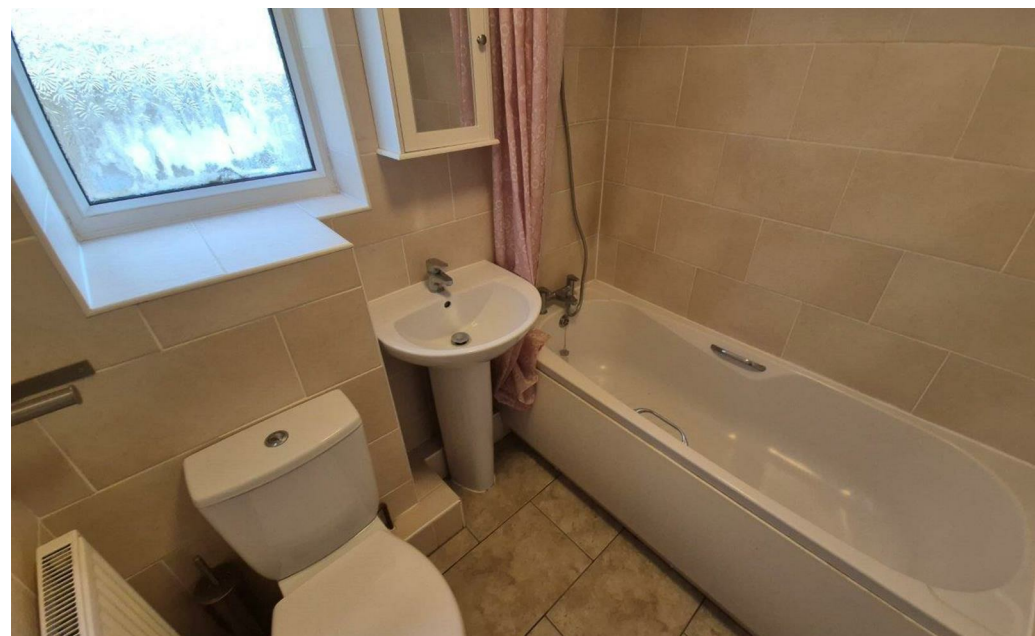
A two bedroom ground floor maisonette. The property has a good sized lounge that leads into a fitted Kitchen. A contemporary white Bathroom suite with shower over.

Two Good sized bedrooms.

Gas Central heating and Upvc double glazing.

Enclosed low maintenance rear garden which is laid down to Patio slabs.

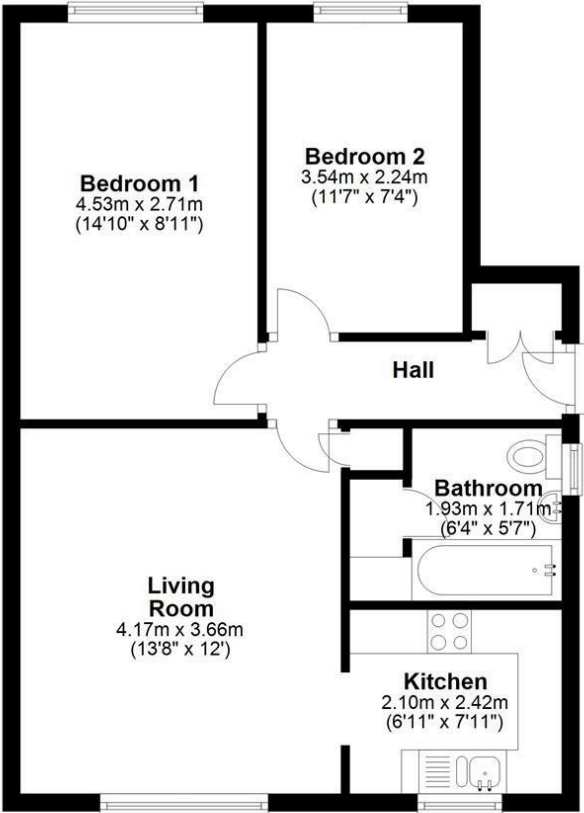
This apartment is located within an easy level walk of shops, a popular primary school and regular public transport. The town centre of Radstock is less than a mile, Midsomer Norton is three miles. Bath city centre is twelve miles and Bristol city centre are sixteen miles.





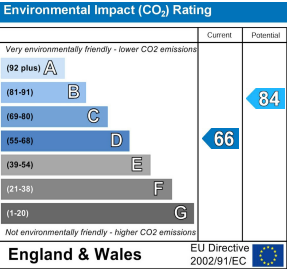
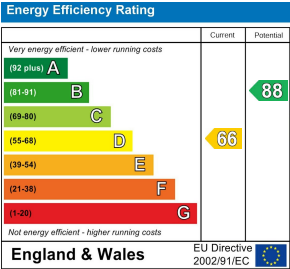
Ground Floor

Approx. 51.0 sq. metres (548.7 sq. feet)



Total area: approx. 51.0 sq. metres (548.7 sq. feet)

Whilst every attempt has been made to ensure accuracy of the floor plan, measurements of doors, windows, rooms and any other items are approximate and no responsibility is taken for any error, omission or mis-statement. This plan is for illustration purposes only and should be used as such by the prospective purchaser. Services, systems and appliances have not been tested and no guarantee to their operability or efficiency can be given. Plan produced using PlanUp.



These particulars, whilst believed to be accurate are set out as a general outline only for guidance and do not constitute any part of an offer or contract. Intending purchasers should not rely on them as statements of representation of fact, but must satisfy themselves by inspection or otherwise as to their accuracy. No person in this firms employment has the authority to make or give any representation or warranty in respect of the property.