



'Primrose Valley', Clutton, Bristol, BS39 5PG

£450,000

- Village Location
- Three Bedrooms
- Council Tax Band - D
- Countryside Views
- Commuting Distance to Bristol, Bath & Wells
- Detached Bungalow
- Energy Rating - D
- Tenure - Freehold
- Driveway & Garage
- Spacious Living Spaces

Barons are delighted to offer to the market this spacious three bedroom detached bungalow, situated in the highly sought-after village of Clutton. Ideally located for commuters, the property offers excellent access to Bristol, Bath, and Wells.

The accommodation is thoughtfully arranged and well proportioned throughout, making it ideal for those seeking comfortable single level living. The property comprises a bright and spacious lounge/dining room, a fitted kitchen breakfast room, and airing cupboard. There are two generous double bedrooms, single bedroom and large bathroom with bath and separate shower cubicle.

Externally, the bungalow benefits from an enclosed rear garden with stunning views over neighbouring field. The garden is mainly laid to lawn and complemented by mature shrub borders. To the front of the property accessed through double gates is a spacious driveway and lawned and seating area. Further advantages of this property is an attached garage, UPVC double glazing, and gas central heating.

Clutton is a popular and well-connected village with local amenities, while Bristol city centre is approximately 30 minutes away by car, making this an excellent choice for commuters and those seeking village living with convenient access to nearby cities.

Reception Room 17'11 x 12'5 (5.46m x 3.78m)

Kitchen/Breakfast Room 12'5 x 11'7 (3.78m x 3.53m)

Bedroom One 12' x 9'10 (3.66m x 3.00m)

Bedroom Two 9'10 x 9'10 (3.00m x 3.00m)

Bedroom Three 9'10 x 7'2 (3.00m x 2.18m)

Bathroom

Utility/Airing Room

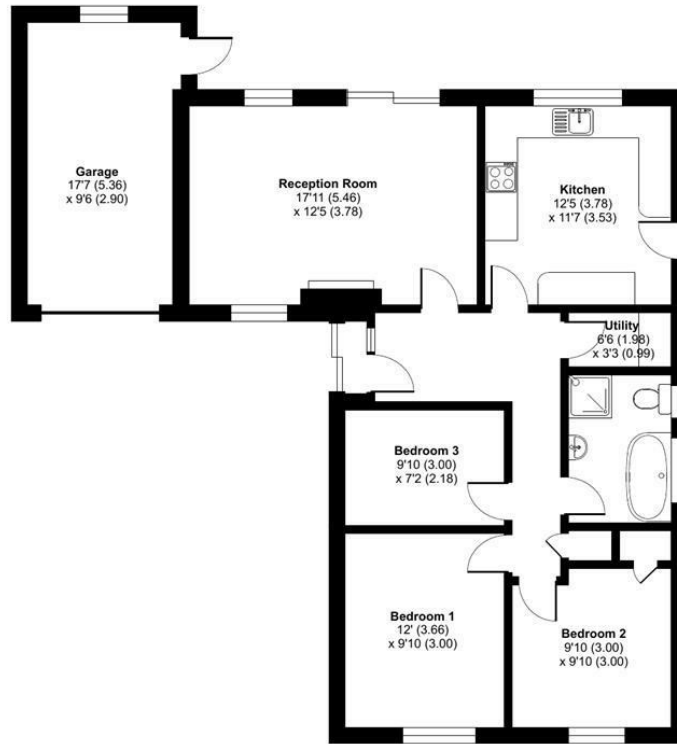
Garage 17'7 x 9'6 (5.36m x 2.90m)





Primrose Valley, Greensbrook, Clutton, Bristol, BS39

Approximate Area = 895 sq ft / 83.1 sq m
Garage = 159 sq ft / 14.8 sq m
Total = 1054 sq ft / 97.9 sq m
For identification only - Not to scale

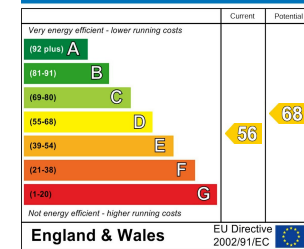


GROUND FLOOR

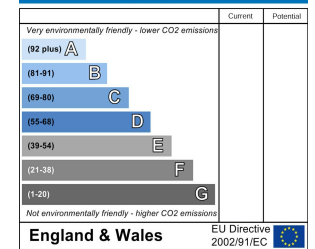
Floor plan produced in accordance with RICS Property Measurement Standards incorporating International Property Measurement Standards (IPMS2 Residential). © nichecom 2025. Produced for Barons Property Centre. REF: 1410421



Energy Efficiency Rating



Environmental Impact (CO₂) Rating



These particulars, whilst believed to be accurate are set out as a general outline only for guidance and do not constitute any part of an offer or contract. Intending purchasers should not rely on them as statements of representation of fact, but must satisfy themselves by inspection or otherwise as to their accuracy. No person in this firm's employment has the authority to make or give any representation or warranty in respect of the property.