



- Energy Rating - D
- Four Bedroom (Three Doubles)
- Driveway & EV Charging Point
- Refurbished Throughout
- Semi Detached Home
- Landscaped Rear Garden
- Garage
- Kitchen Diner

Greenwoods are delighted to bring to market this stunning four bed home.

Having been totally transformed by the current owners this property has been redesigned to offer a contemporary living style with plenty of space inside and out! It's the perfect home for hosting family and friends.

Upon entering this fabulous family house, you are greeted into the hallway that provides access to several rooms on the ground floor. The living room is spacious yet with a cosy feel, to the rear is a large window which floods the room with natural light, a great space to unwind at the end of the day.

Flowing through the house we find the heart of the home, an impressive kitchen diner carefully designed to create a superb hosting room, ideal for a kitchen party or simply cooking for a family dinner. The kitchen itself benefits induction home, with double oven, ample storage cupboards and quality quartz worktops throughout. The island breakfast bar being the perfect place to grab a bite.

The dining space profits French doors allowing easy access onto the landscaped rear garden.

A versatile room is located to the front of the property, current used as a home office but could easily be a fourth bedroom, games room or even child's play space.

Completing the downstairs is the modern bathroom, a white three piece suite with gold aspects to catch the eye. This space has been transformed by the current owners in line with the rest of this home.

Upstairs are three double bedrooms the largest of which spanning an impressive 20ft x 8'10". The WC provides additional plumbing for a growing family.

Externally this home continues to impress, to the front is a generous driveway, large enough for three cars before finding the garage, the garage itself also provides access into the rear garden. The rear garden has been beautifully landscaped with established borders, seating area and patio section with the main part of the garden laid to lawn.

This family home is ready for its new owners!

Living Room 16'1" x 11'3" (4.92 x 3.43)

Kitchen Diner 19'8" x 12'2" (6.01 x 3.73)

Bedroom One 20'0" x 8'9" (6.12 x 2.68)

Bedroom Two 16'3" x 9'10" (4.97 x 3.02)

Bedroom Three 16'3" x 8'2" (4.97 x 2.49)

Bedroom Four/Study 8'4" x 8'0" (2.55 x 2.46)

Bathroom 6'10" x 5'6" (2.09 x 1.69)

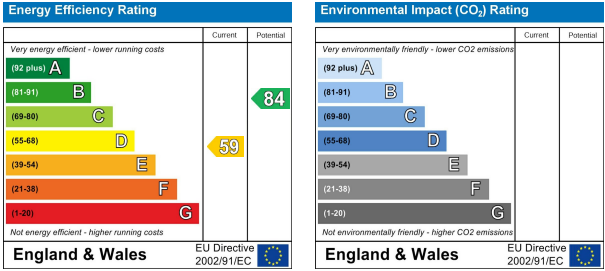
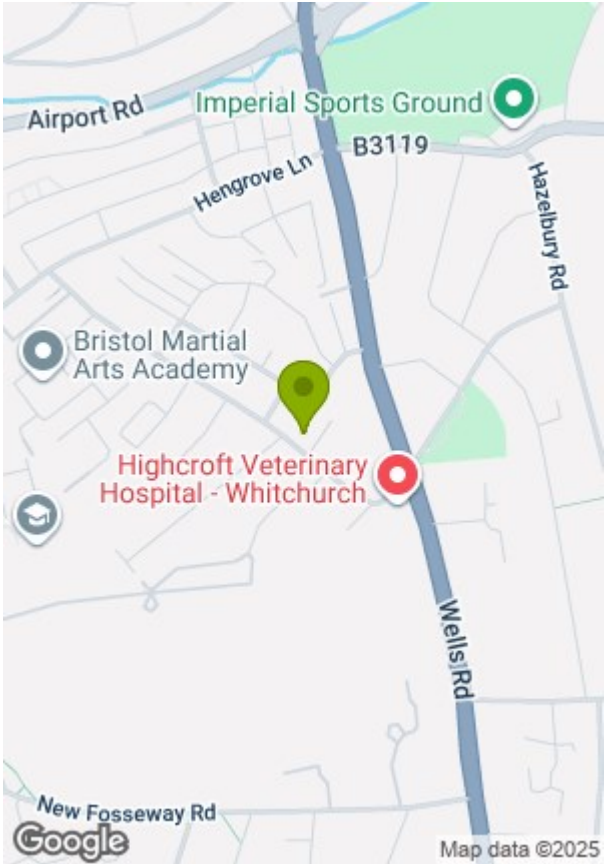
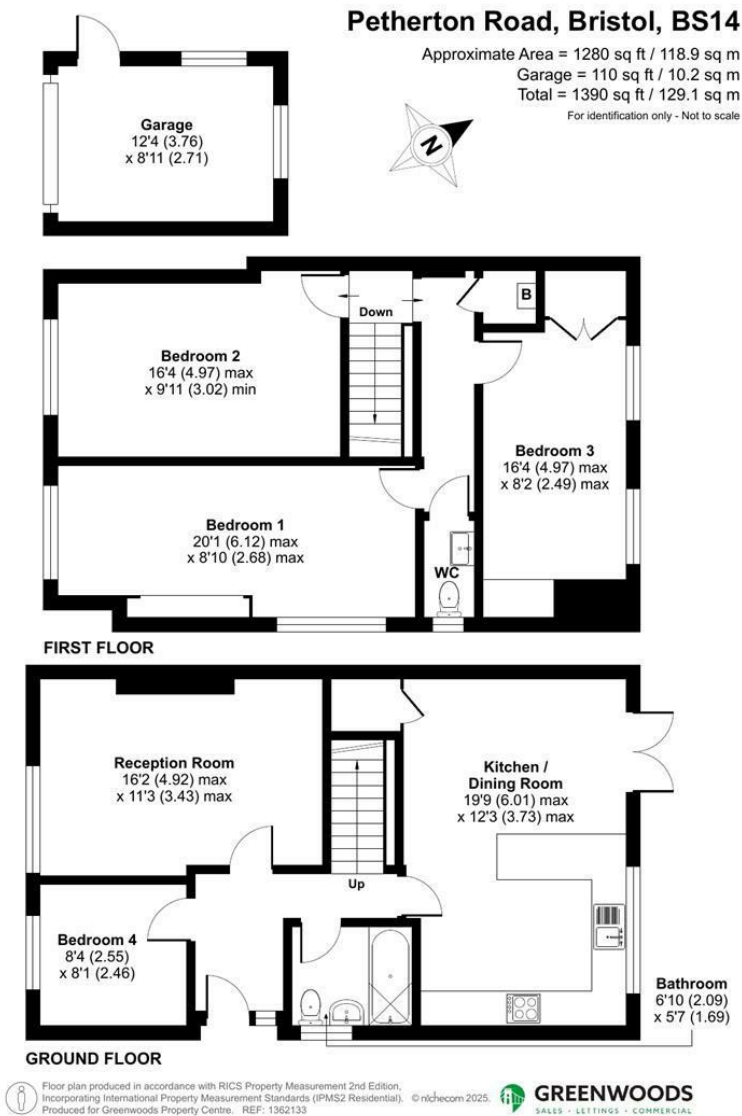
WC

Garage 12'4" x 8'10" (3.76 x 2.71)

Tenure - Freehold







These particulars, whilst believed to be accurate are set out as a general outline only for guidance and do not constitute any part of an offer or contract. Intending purchasers should not rely on them as statements of representation of fact, but must satisfy themselves by inspection or otherwise as to their accuracy. No person in this firms employment has the authority to make or give any representation or warranty in respect of the property.