



Clatworthy Drive, Hengrove

£215,000

- **Energy Rating - C**
- **NO ONWARD CHAIN**
- **Light & Airy Throughout**
- **Spacious Lounge**
- **Two Bedroom First Floor Flat**
- **Allocated Parking Space**
- **Perfect For First Time Buyers**
- **Close To Local Amenities**

Offered with no onward chain, this well-presented two-bedroom first-floor flat is ideally situated in the heart of Hengrove. With its spacious layout and convenient location, it represents an excellent opportunity for first-time buyers, landlords, or anyone looking to downsize.

The property enjoys easy access to a wide range of local amenities, including shops, schools, bus routes, and the ever-popular Hengrove Park, perfect for recreation and leisure.

Inside, the flat features a bright and airy lounge, a well-proportioned kitchen with built-in appliances, and two comfortable bedrooms, one of which benefits from fitted wardrobes. There's also a larger-than-average shower room and two generous hallway storage cupboards, adding to the sense of space and practicality.

Further highlights include UPVC double glazing, gas central heating, a secure entry phone system, and an allocated parking space.

Combining comfort, convenience, and great local connections, the

Living Room 16'6" max x 13'3" max (5.05 max x 4.06 max)

Kitchen 9'9" max x 7'4" (2.99 max x 2.26)

Bedroom One 14'1" max x 11'1" max (4.31 max x 3.40 max)

Bedroom Two 10'2" x 6'7" (3.10 x 2.01)

Shower Room 9'10" max x 5'10" max (3.02 max x 1.79 max)

Tenure - Leasehold

Lease End Date 01/01/3006

Lease Term 999 years from 1 January 2007

Lease Term Remaining 980 years

Service Charge - £1674.58 Per year

Ground Rent - £98.77 Twice yearly

Council Tax Band - B







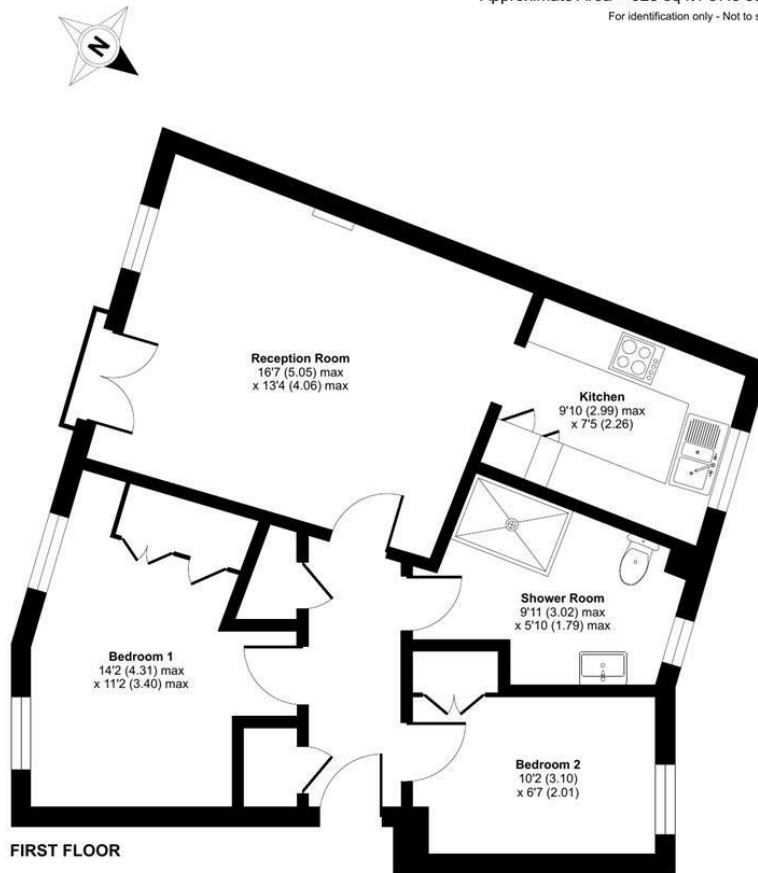




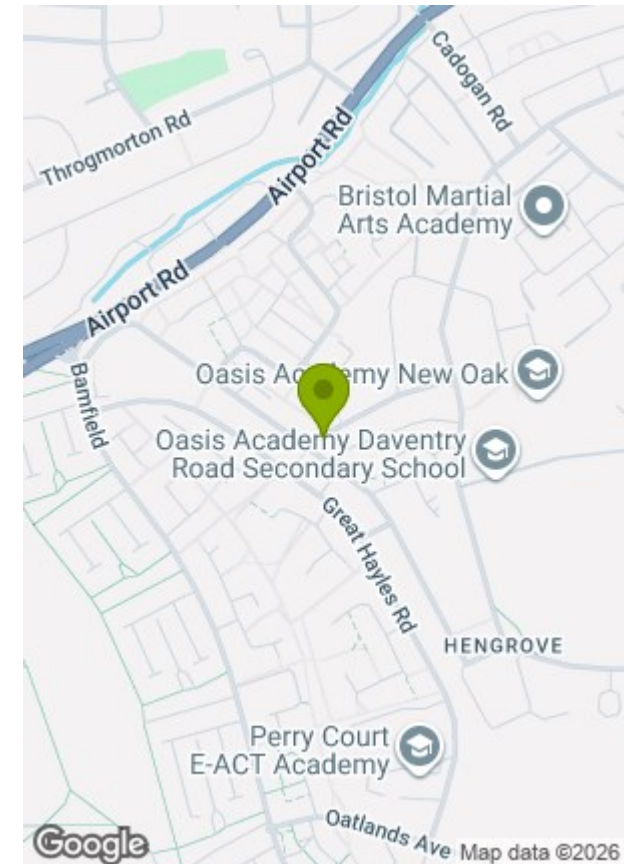


Clatworthy Drive, Bristol, BS14

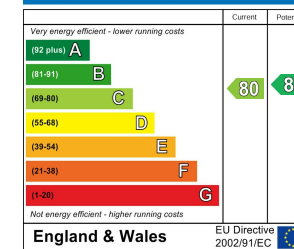
Approximate Area = 623 sq ft / 57.8 sq m
For identification only - Not to scale



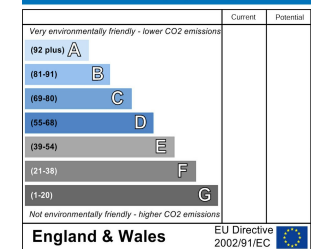
Floor plan produced in accordance with RICS Property Measurement 2nd Edition, Incorporating International Property Measurement Standards (IPMS2 Residential). © nichecom 2025. GREENWOODS SALES · LETTINGS · COMMERCIAL Produced for Greenwood's Property Centre. REF: 1373243



Energy Efficiency Rating



Environmental Impact (CO₂) Rating



These particulars, whilst believed to be accurate are set out as a general outline only for guidance and do not constitute any part of an offer or contract. Intending purchasers should not rely on them as statements of representation of fact, but must satisfy themselves by inspection or otherwise as to their accuracy. No person in this firm's employment has the authority to make or give any representation or warranty in respect of the property.