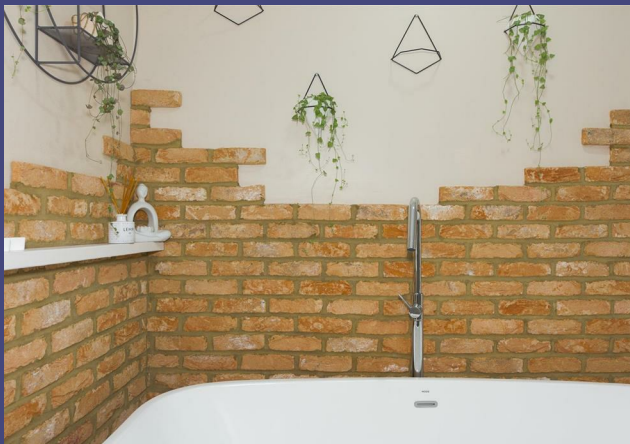


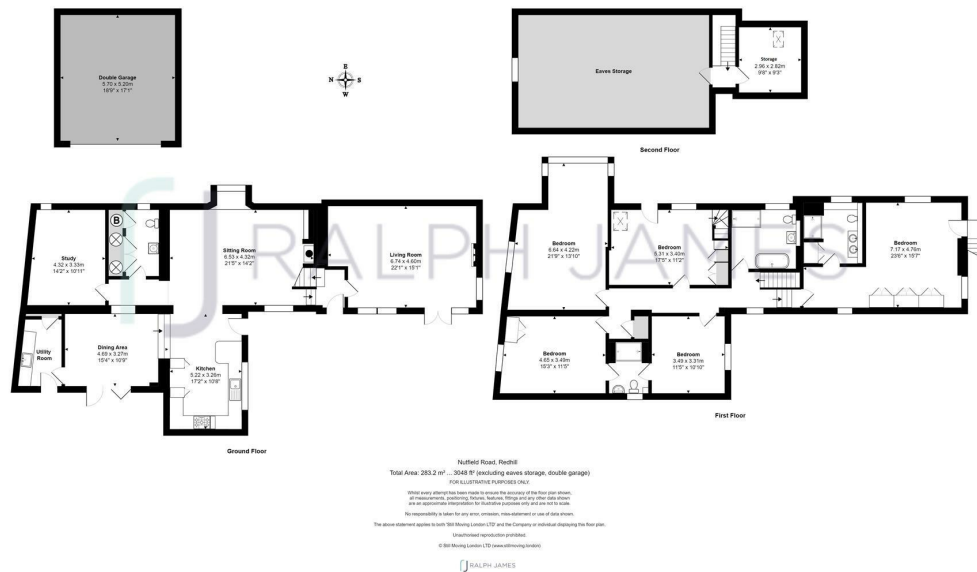
Nutfield Road Redhill Surrey

£1,000,000



RALPH JAMES

FLOOR PLANS



IN A NUTSHELL



Gorgeous garden



Large living room, study, dining room & loft storage



Gorgeous open plan kitchen/sitting room



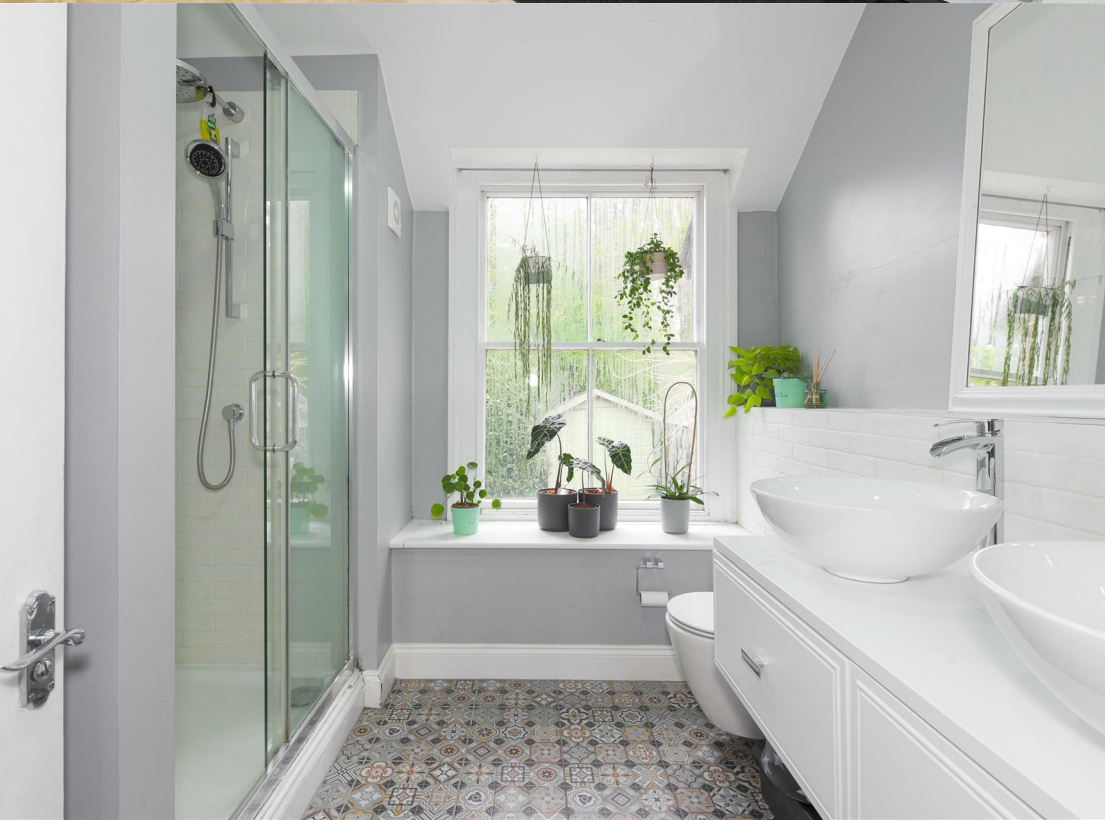
Five bedrooms



Family bathroom, master en-suite & downstairs W/C



Large driveway & double garage



WHAT'S GREAT?

This beautifully presented home has the perfect combination of contemporary and rustic design creating a welcoming and inviting feel as soon as you step foot through the door. Its stylish finish and open plan design creates the ideal space for the busy running of a growing family.

The large living room is bright and airy, comfortably fitting in a couple of large sofas, giving you a place to unwind with a good movie after a long day. Double doors lead you outside to follow the steps up to the stunning garden, the large lawn is circled by trees and shrubs keeping it private and tranquil.

Spacious and open, the generously sized kitchen/sitting room is the hub of the home, whether it be a dinner party with friends or a quiet night in with the family, you can stay involved in the chatter whilst you're busy cooking up something delicious. Once dinner is ready you can head through to the dining room to enjoy your meal, if it's a warm summers day the bi-folding doors can be opened to let in a gentle breeze. The ground floor also comes with a utility room, study and W/C!

Making your way upstairs to the first floor there are five double bedroom, the master bedroom is quite spectacular with built in wardrobes and an impressive en-suite that includes a walk-in shower, his and her sinks as well as storage. The family bathroom has an enticing roll top bath as well as walk in shower and pretty garden views. The second floor has an additional room that is great for storage and could potentially be converted to another bedroom (STPP).

This home comes with a large private driveway as well as a double garage.

A very convenient location to be within walking distance to Redhill's fantastic train station with excellent transport in and out of London, Gatwick and Brighton. Redhill town centre has all your essential shopping and is minutes from the M25.



Ashley likes it
because....

"This is a stunning home, it's spacious and open layout welcomes a growing family and the stunning garden is a dream for those who enjoy getting their hands dirty. Nutfield offers some spectacular countryside walks and Redhill Town is a short car or bus ride away."

SELLER'S SECRET

"Since moving into Hurst Cottage 5 years ago we have updated the house and put in a new kitchen and new bathrooms as well as a new boiler in 2021. The exterior still holds the charms of a homely cottage and we have added decking in the garden, created a meadow bank for wild flowers and restored the pond. We are regularly visited by deer, badgers, foxes as well as newts and frogs in the pond. The garden is south facing and is bathed in sunlight, it has been possible to spend days outside on the decking, enjoying the garden, growing fruit and vegetables and also going for walks in the forest which backs on to the garden. The house is perfect for a large and growing family with ample space downstairs and the potential to use the living room as a formal reception room. We have also had plenty of space to set up two home-working stations for working and schooling from home! When we start going back to the office, Redhill station is within walking distance. We have thoroughly enjoyed living and growing in Hurst Cottage and the surrounding countryside, while still having the amenities of Redhill nearby."

CLOSE TO HOME

Redhill Train Station 0.6m

Home Cottage Pub 0.5m

M25 2.9m

Gatwick Airport 7.0m

Nutfield Priory Hotel & Spa 0.7m

Reigate Town Centre 2.6m

The Warwick School 0.6m

Dunottar 1.6m

Nutfield Village 1.4m

The Gym 0.9m



To buy or not to buy...

RALPH JAMES



39 High Street | Redhill | RH1 1RX | 01737 765555
admin@ralphjames.co.uk | www.ralphjames.co.uk