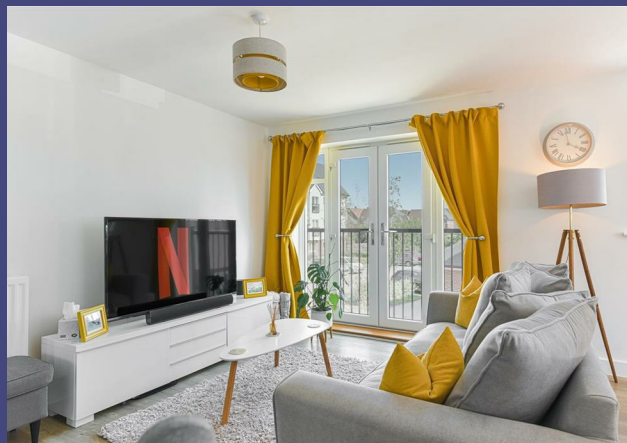


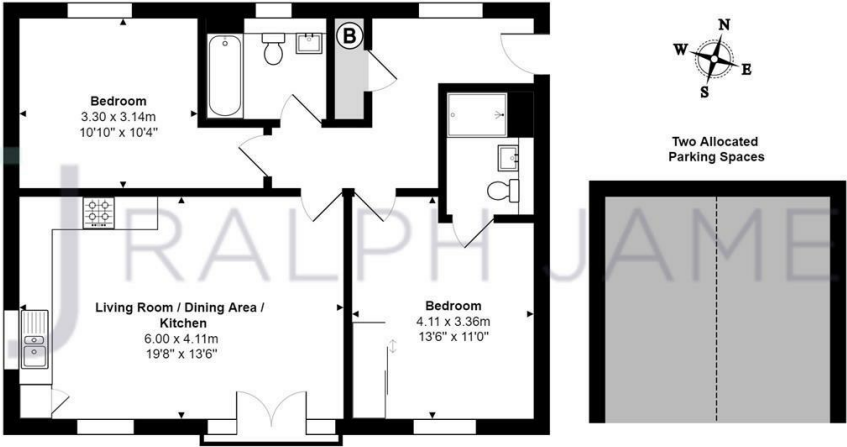
Bricklayer Lane Horsham West Sussex

£280,000



RALPH JAMES

FLOOR PLANS



First Floor Flat

Beaumont House, Bricklayers Lane, Faygate

Total Area: 70.6 m² ... 759 ft² (excluding two allocated parking spaces)

FOR ILLUSTRATIVE PURPOSES ONLY:

Whilst every attempt has been made to ensure the accuracy of the floor plan shown, all measurements, positioning, fixtures, features, fittings and any other data shown are an approximate interpretation for illustrative purposes only and are not to scale.

No responsibility is taken for any error, omission, miss-statement or use of data shown.

The above statement applies to both 'Still Moving London LTD' and the Company or individual displaying this floor plan.

Unauthorised reproduction prohibited.

© Still Moving London LTD (www.stillmoving.london)



IN A NUTSHELL



enter text here



1 receptions rooms



enter text here



2 bedrooms



2 bathrooms



enter text here



WHAT'S GREAT?

This modern and stylish first floor flat is situated in the popular and sought after location of Kilnwood Vale. Bricklayer Lane is tucked away down a quiet road and only a stone's throw away from the lake and stunning country walks, ideal for an early morning jog or a summers afternoon stroll.

Built by Crest Nicholson to the highest of standards, this property is only 3 years old and comes with its 10 year warranty. This modern building comprises of beautiful contemporary apartments which are spacious, bright and perfect for anyone looking for somewhere to move straight into without having to do any work.

As you make your way inside you are greeted by a long inviting hallway with handy storage cupboards, making the perfect space to hang your coats and shoes. Beautiful Kardean flooring continues throughout and into the open plan living/kitchen/dining room. Double aspect floor to ceiling windows allow for plenty of natural light to flood through the room. The modern and trendy kitchen is complete with fully fitted appliances and sleek grey cupboards. The Juliet balcony is a nice edition, allowing you to open the doors to allow a gentle breeze into this spacious room.

The master bedroom is an excellent size with its stylish decor and benefits with its own en-suite shower room. The second bedroom is also a very generous size, ideal as a spare room or if you are looking as a sharers then the space could work extremely well. Also off the hallway is the main bathroom with contemporary cream tiles and a modern 3 piece suite.

Parking will never be issue with 2 allocated parking spaces as well as visitor's bays for when family and friends pop over to visit.



Ashley likes it
because....

"Offering one of the few resale apartments on Kilnwood vale, this is an exciting opportunity for any first time buyer or investor out there looking to buy in 2020. Situated on the quietest part of the development, this apartment is different to most and will stun you with its airy feel. You'll also benefit from a south east facing Juliet balcony."

SELLER'S SECRET

"We chose this apartment based upon the views over the lake, and the sunlight that floods the living space all day long. We've loved how quiet it is in this little close, and often enjoy an evening stroll to the nearby country park."

CLOSE TO HOME

enter text here

To buy or not to buy...

RALPH JAMES



39 High Street | Redhill | RH1 1RX | 01737 765555
admin@ralphjames.co.uk | www.ralphjames.co.uk

