



29 Clements Lane

Portland, DT5 1AS



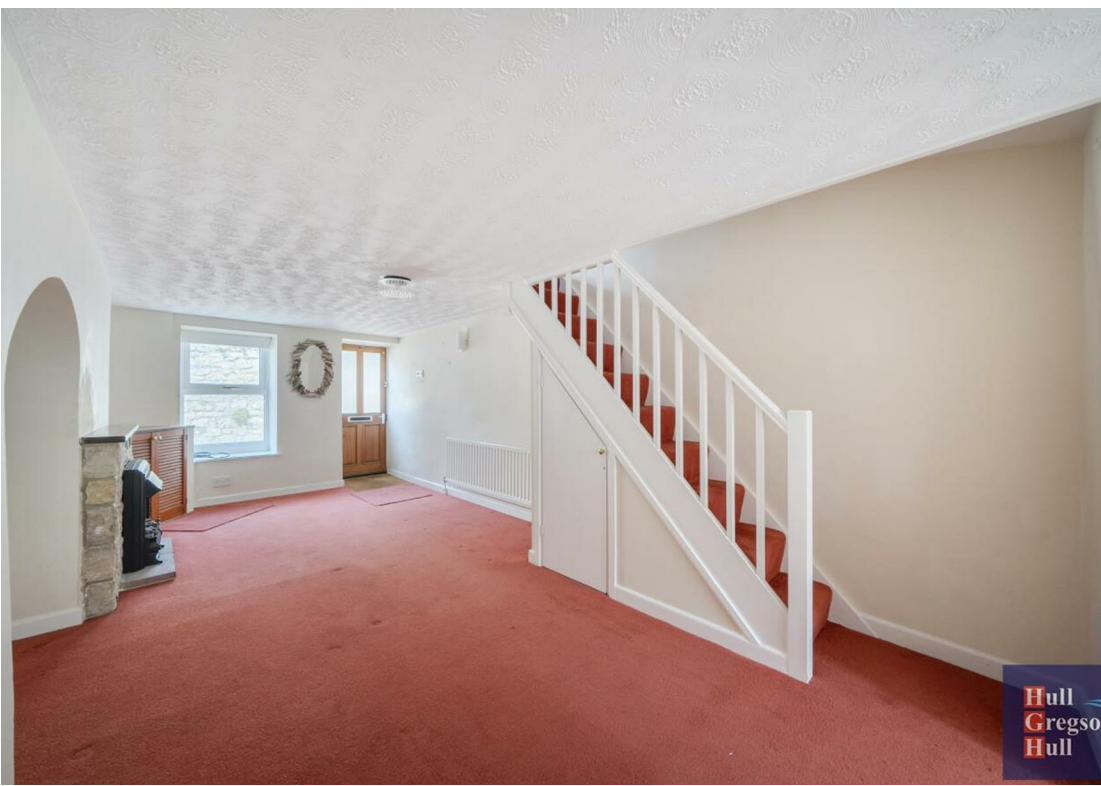
Asking Price
£160,000 Freehold



Clements Lane

Portland, DT5 1AS

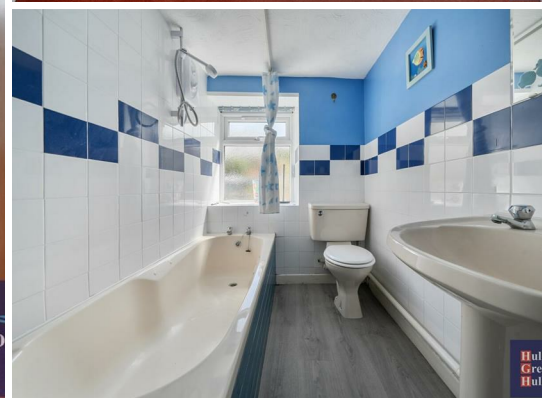
- Just Moments From Chesil Beach
- Charming Stone-Fronted Cottage
- Two Double Bedrooms
- No Onward Chain For A Smooth Purchase
- Situated Close To Chiswell
- Bright And Spacious Living Accommodation
- Walking Distance To Local Amenities
- Well-Proportioned Kitchen With Garden Access
- Large Loft Room With Dual Aspect Dormer Windows
- Private South-Facing Courtyard Garden



Hull
Gregson
Hull

Hull
Gregson
Hull

Hull
Gregson
Hull



Just **MOMENTS FROM CHESIL BEACH**, this **CHARMING STONE-FRONTED COTTAGE** offers a wonderful blend of character, space, and coastal living. Offered to the market with **NO ONWARD CHAIN**. Set just off Chiswell and within easy walking distance of local amenities, the property features **TWO DOUBLE BEDROOMS**, a spacious and light-filled living area, and a private south-facing courtyard garden—making it an ideal home by the sea.

Stepping into this property you



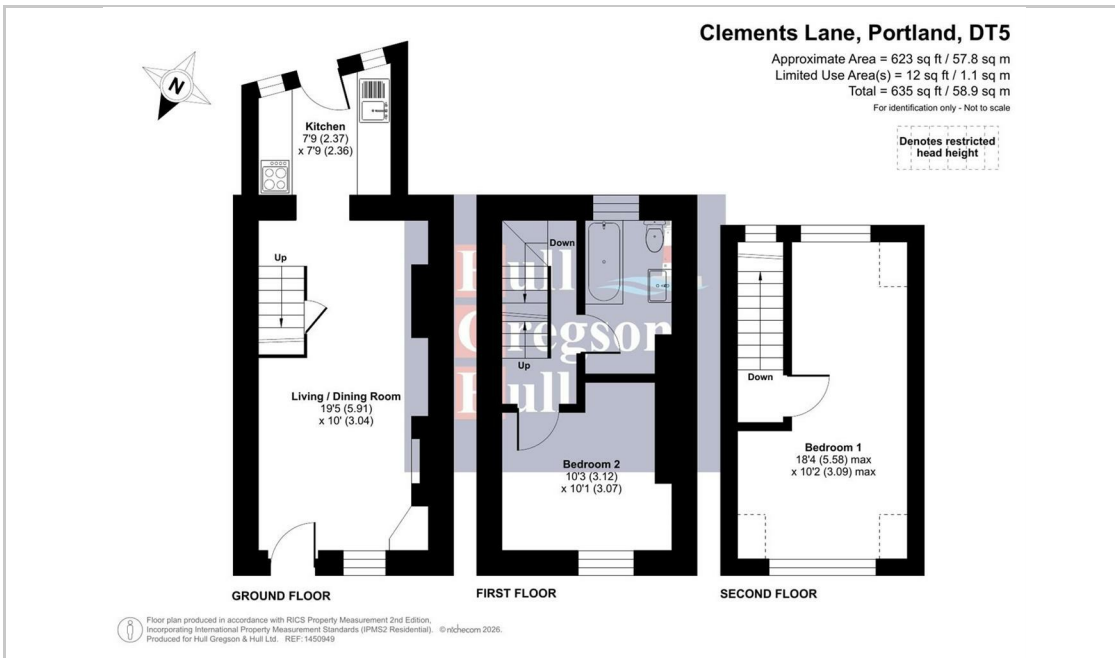
enter into the spacious main living accommodation leading to kitchen and stairs to first floor. The lounge/diner has a double glazed window to the front allowing for plenty of natural, a feature fireplace and room for a table and chairs for dining.

Leading through to the kitchen there are a number of overhead and base level units with space for under counter fridge & freezer and also a cooker. The kitchen offers access to the secure courtyard garden enjoying a southerly aspect.

The first floor accommodation comprises a double bedroom, family bathroom and stairs to the second floor. The bedroom features a large double glazed window to the front enjoying the afternoon sun. The family bathroom includes a bath with electric shower function, a wash hand basic and w/c.



The second floor offers a large loft room with dormer windows to both sides allowing for a dual aspect, perfect for natural lighting.



Living/Dining Room
 19'4" x 9'11" (5.91 x 3.04)

Kitchen
 7'9" x 7'8" (2.37 x 2.36)

Bedroom 2
 10'2" x 10'0" (3.12 x 3.07)

Bedroom 1
 18'3" x 10'1" (5.58 x 3.09)

Family Bathroom

Additional information

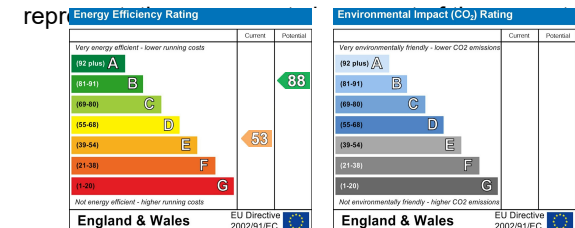
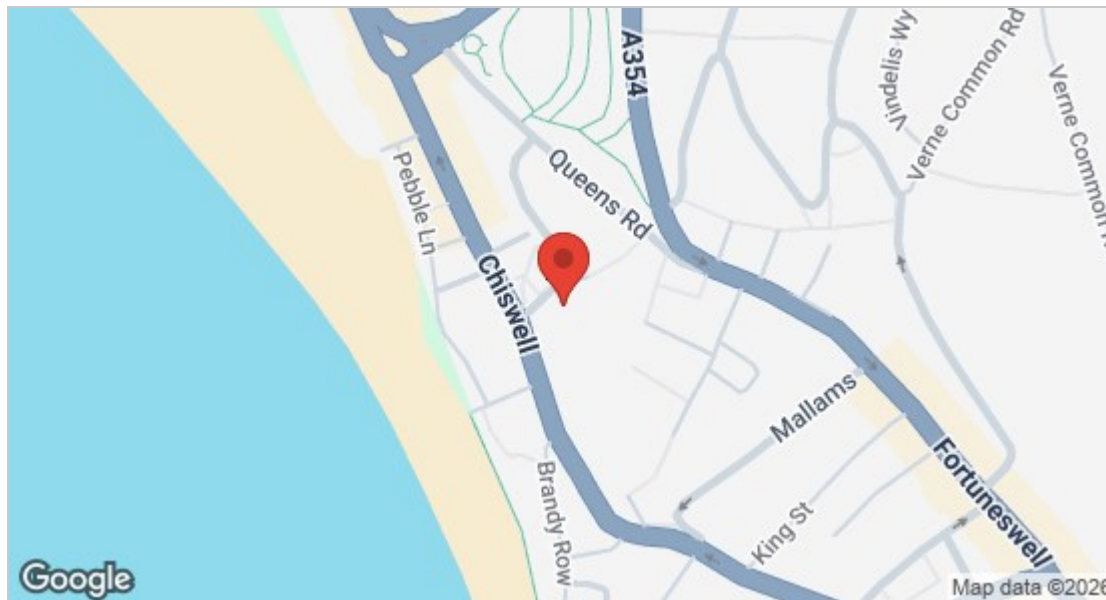
The following details have been provided by the vendor, as required by Trading Standards. These details should be checked by your legal representative for accuracy.

Property type: Terraced House
 Property construction: Standard Construction
 Mains Electricity
 Mains Water & Sewage: Supplied by Wessex Water
 Heating Type: Gas

Broadband/Mobile signal/coverage: For further details please see the Ofcom Mobile Signal & Broadband checker.
<https://checker.ofcom.org.uk/>

Disclaimer

These particulars, whilst believed to be accurate are set out as a general outline only for guidance and do not constitute any part of an offer or contract. Intending purchasers should not rely on them as statements of representation of fact, but must satisfy themselves by inspection or otherwise as to their accuracy. All measurements are approximate. Any details including (but not limited to): lease details, service charges, ground rents, property construction, services, & covenant information are provided by the vendor and you should consult with your legal advisor/ satisfy yourself before proceeding. No person in this firms employment has the authority to make or give any



These particulars, whilst believed to be accurate are set out as a general outline only for guidance and do not constitute any part of an offer or contract. Intending purchasers should not rely on them as statements of representation of fact, but must satisfy themselves by inspection or otherwise as to their accuracy. No person in this firms employment has the authority to make or give any representation or warranty in respect of the property.