

Weston Road
Portland, DT5 2BZ



Asking Price
£190,000 Freehold



Weston Road

Portland, DT5 2BZ

- Mid Terrace Character Property
- Accommodation Arranged Over Three Floors
- Three Double Bedrooms
- Far Reaching Sea Views
- Front Aspect Living Room
- Light & Airy Dining Room
- Generous Sized Rear Garden
- Requiring Modernisation Throughout
- Offered For Sale With No Onward Chain
- Highly Popular Location





Offered for sale with NO ONWARD CHAIN is this charming MID TERRACE PERIOD COTTAGE. Boasting accommodation arranged over THREE FLOORS. The property offers THREE DOUBLE BEDROOMS, front aspect LOUNGE, separate DINING ROOM, fitted kitchen, downstairs FAMILY BATHROOM. There is the added benefit of a SPACIOUS MATURE REAR GARDEN and far reaching SEA VIEWS. Requiring modernisation throughout, viewings COME HIGHLY ADVISED.



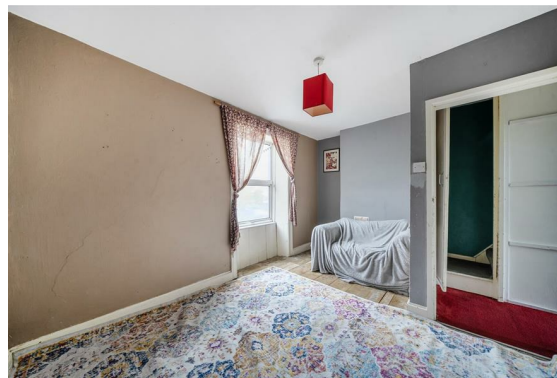
Entering the property you are greeted by an entrance hallway where doors lead to principal rooms on the ground floor. Situated to the front aspect of the property is the spacious living room, perfect for cosy evenings. The ideal family home further offers a separate dining room, with feature wood burner and understairs storage. From the dining room access can be gained to the fitted kitchen and sun room. French doors from the dining room lead out to the sun room and then further French doors provide access out to the mature vast rear garden. The fitted kitchen offers a wide selection of colour matching eye and base level storage cupboards and a selection of domestic appliances. To complete the ground floor accommodation is the family bathroom. The bathroom is fitted with a modern white suite, with bath and shower over, wash hand basin and WC.

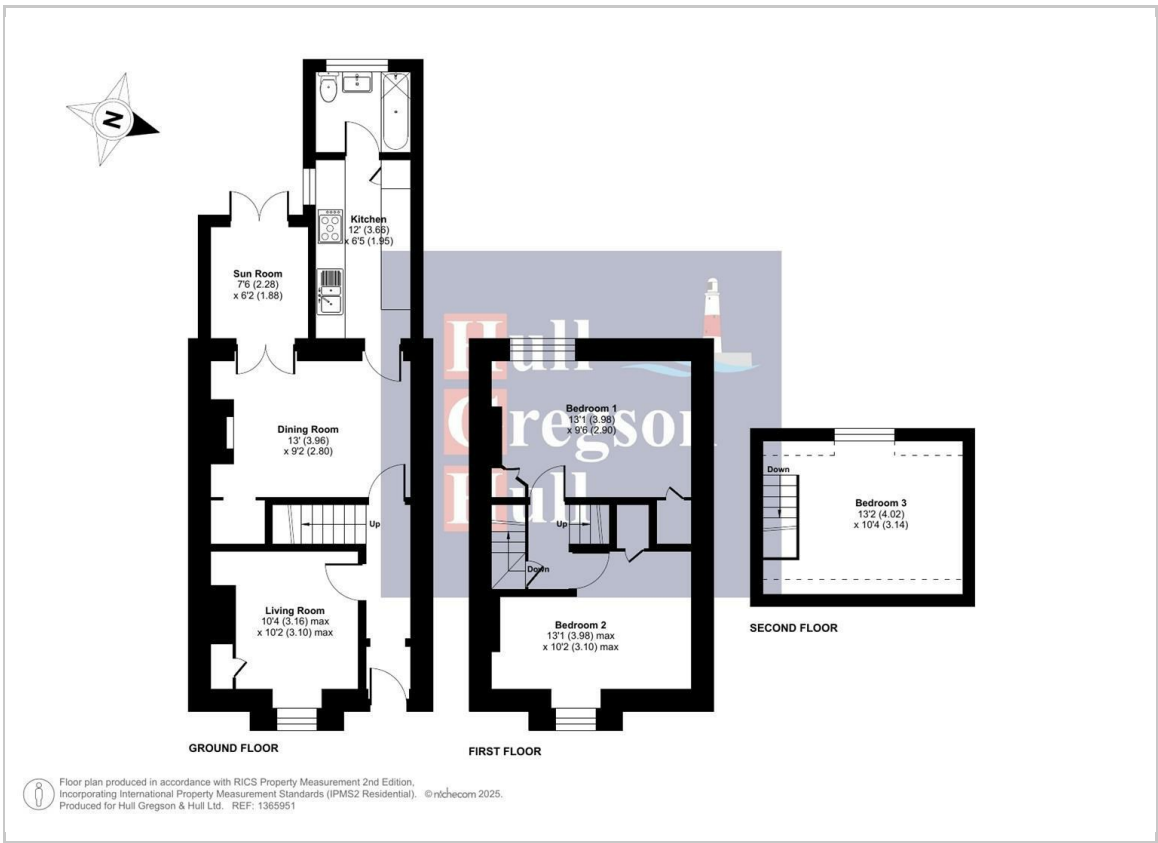
Stairs rise to the first floor where bedrooms one and two are located. Both bedrooms are light and airy double rooms, benefitting from built in storage. Bedroom one is of rear aspect and enjoys far reaching sea views.

Stairs rise once again to the second floor where bedroom three, which is yet a further double room is located.

The rear garden is a generous sized mature space, offering a wide selection of mature plants, shrubs and lawn area,. To the bottom of the garden there is a space for a garden shed, with mature trees behind.

Situated in a highly popular residential location, offering easy access to to local amenities and regular well service public transport links.





Living Room
10'4 max x 10'2 max (3.15m max x 3.10m max)

Dining Room
13' x 9'2 (3.96m x 2.79m)

Sun Room
7'6 x 6'2 (2.29m x 1.88m)

Kitchen
12' x 6'5 (3.66m x 1.96m)

Ground Floor Bathroom

Bedroom One
13'1 x 9'6 (3.99m x 2.90m)

Bedroom Two
13'1 max x 10'2 max (3.99m max x 3.10m max)

Bedroom Three
13'2 x 10'4 (4.01m x 3.15m)

Additional information

The following details have been provided by the vendor, as required by Trading Standards. These details should be checked by your legal representative for accuracy.

Property type: Mid Terrace
Property construction: Standard
Mains Electricity
Mains Water & Sewage: Supplied by Wessex Water
Heating Type: Gas Central Heating

Broadband/Mobile signal/coverage: For further details please see the Ofcom Mobile Signal & Broadband checker.
checker.ofcom.org.uk/

Disclaimer

These particulars, whilst believed to be accurate are set out as a general outline only for guidance and do not constitute any part of an offer or contract. Intending purchasers should not rely on them as statements of representation of fact, but must satisfy themselves by inspection or otherwise as to their accuracy. All measurements are approximate. Any details including (but not limited to): lease details, service charges, ground rents, property construction, services, & covenant information are provided by the vendor and you should consult with your legal advisor/ satisfy yourself before proceeding. No person in this firms employment has the authority to make or give any representation or warranty in respect of the property.

