

Alma Terrace
Portland, DT5 1DQ



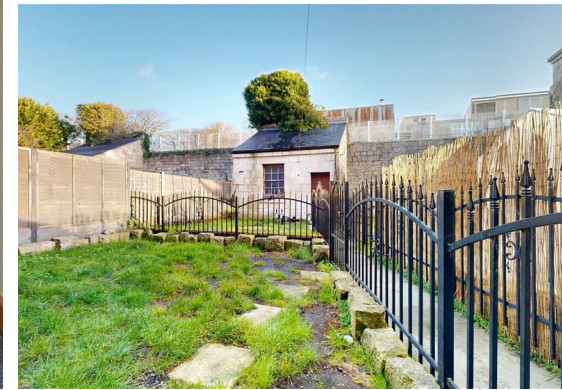
£875 PCM



Alma Terrace

Portland, DT5 1DQ

- Sub-Floor Apartment
- Available Now for Long Term Let
- Private Garden to Rear
- Two Bedroom Property
- Shower Room & Separate WC
- Open Living Space
- Short Walk to Easton Square & Amenities
- Recently Fitted Carpets
- Council Tax Band - A
- Recently Decorated





This TWO BEDROOM, SUB-FLOOR APARTMENT with OPEN LIVING SPACE, it's own PRIVATE GARDEN and is set back, a short walk away from Easton, is AVAILABLE NOW for LONG TERM LET.

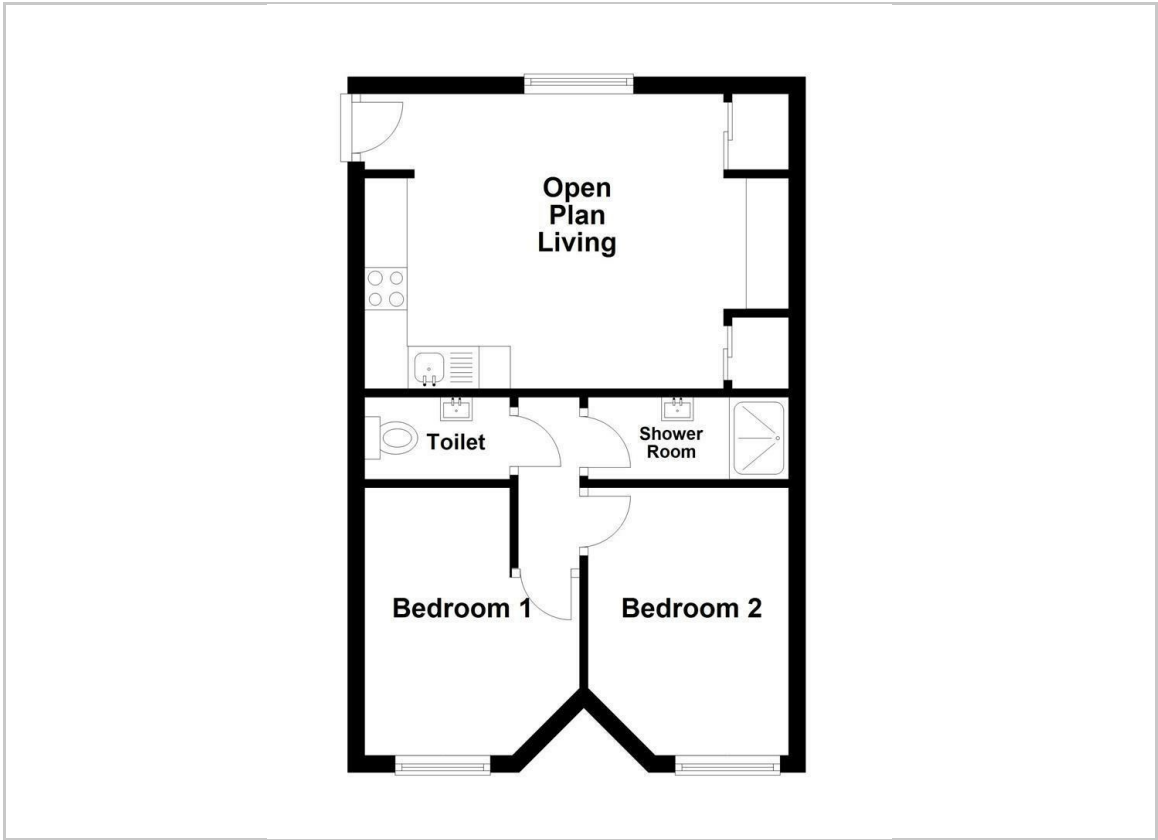
As you step through the entranceway, you find yourself in the open living space benefitting from a front aspect window and built-in storage. The room benefits new carpet and wood panelling effect on

the walls. This open living space features the kitchen, well suiting the necessities of modern living. The kitchen comprises modern-style units with integrated oven and hob.

The apartment has a shower room with open shower and wash hand basin with useful, cabinet storage below. The property also has a separate, private WC.

Further into the property, you find two bedrooms: one to your left and one to your right. Each is laid to laminate wood effect flooring, and the rooms benefit from rear aspect windows overlooking the rear garden.

There is a private, rear aspect garden included in this let.



Lounge / Kitchen
11'11" x 14'11" (3.64 x 4.55)

Bedroom 1
8'5" x 9'10", 88'6" max (2.58 x 3,27 max)

Bedroom 2
10'7" x 8'0" max (3.24 x 2.45 max)

