



## Victoria Avenue

Swanage, BH19 1AZ





## Victoria Avenue

Swanage, BH19 1AZ

- Two Bedroom Semi Detached Home
- Located Close to Local School and Amenities
- Easy to Maintain Decked Garden
- Ideal Family Home
- Large Modern Kitchen/ Dining Room
- Light & Airy
- Ideal for Multi-Generational Living
- Nearby to Transport Links
- Country Walks Close By
- Beautifully Presented Throughout







Welcome to Victoria Avenue. A recently modernised bright and airy three bedroom, semi-detached home close to local schools and amenities. This property offers a delightful blend of modern living and comfort ideal for multi-generational living or a family home.



Stepping into the property, you are greeted by the porch which is convenient for storing shoes and coats after a scenic walk through the country-side. Entering the property, to your left is bedroom two with a large bay window flooding the room with natural light. Through the hallway, the home has a utility space conveniently placed under the stairway to keep all



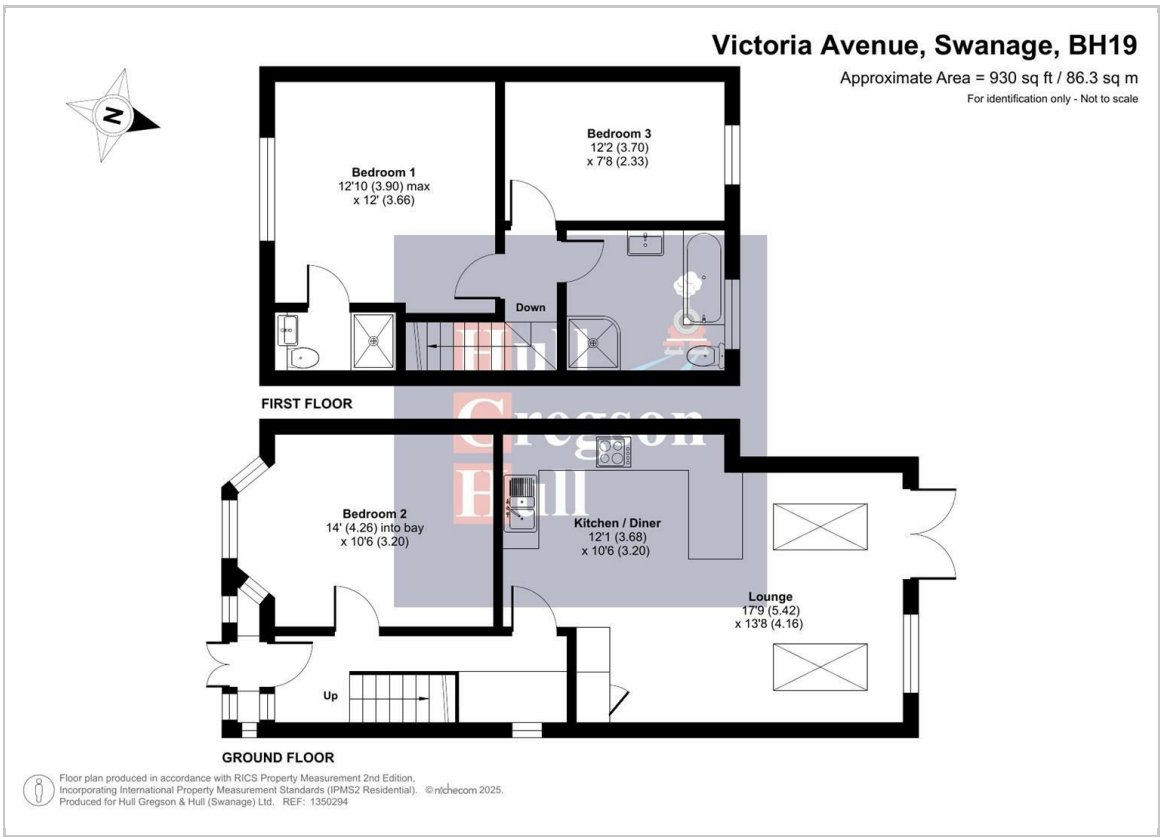
the cleaning supplies out of sight by the built in eye-level and under-counter storage.

Leading further through the property, you enter the heart of the home; the kitchen/dining area. This area of the property has been recently modernised by the current vendors with an extension being added in 2024 to create the impressive lounge. The kitchen has been fitted with integral appliances such as fridge/freezer, oven and hob. The kitchen has a breakfast bar, an ideal extra space to prepare meals. This lovely space would make the perfect setting for family gatherings and for entertaining your guests. Large patio doors overlook your fully decked garden with exceptional views towards the Purbeck Hills.

On the first floor, the property has the principle suite. This exceptionally large room has ample space for a variety of bedroom furniture and a door leading too the ensuite. The ensuite includes a modern white suite comprising a large shower cubicle, low-level W.C and pedestal wash hand basin. There is also heated towel rail.

The third bedroom is a sizeable double, with ample space for bedroom furniture. The views from this bedroom are exceptional, offering a pleasant outlook onto the rear garden and Purbeck Hills beyond.





**Kitchen**  
12'0" x 10'5" (3.68 x 3.20)

**Dining Room**  
17'9" x 13'7" (5.42 x 4.16)

**Reception Room**  
13'11" x 10'5" (4.26 x 3.20)

**Bedroom One**  
12'9" x 12'0" (3.90 x 3.66)

**Bedroom Two**  
12'1" x 7'7" (3.70 x 2.33)

**Disclaimer.**

These particulars, whilst believed to be accurate are set out as a general outline only for guidance and do not constitute any part of an offer or contract. Intending purchasers should not rely on them as statements of representation of fact but must satisfy themselves by inspection or otherwise as to their accuracy. All measurements are approximate. Any details including (but not limited to): lease details, service charges, ground rents, property construction, services, & covenant information are provided by the vendor, and you should consult with your legal advisor/ satisfy yourself before proceeding. No person in this firm's employment has the authority to make or give any representation or warranty in respect of the property.

**Additional Information.**

The following details have been provided by the vendor, as required by Trading Standards. These details should be checked by your legal representative for accuracy.

Property type: House  
Property construction: Standard  
Mains Electricity  
Mains Water & Sewage: Supplied by Wessex Water  
Heating Type: Gas Central Heating  
Broadband/Mobile signal/coverage: For further details please see the Ofcom Mobile Signal & Broadband checker.  
[checker.ofcom.org.uk/](https://checker.ofcom.org.uk/)

