



130 High Street  
Swanage, BH19 2PA

1 1 1 C

Freehold

**H**ull  
**G**regson  
**H**ull



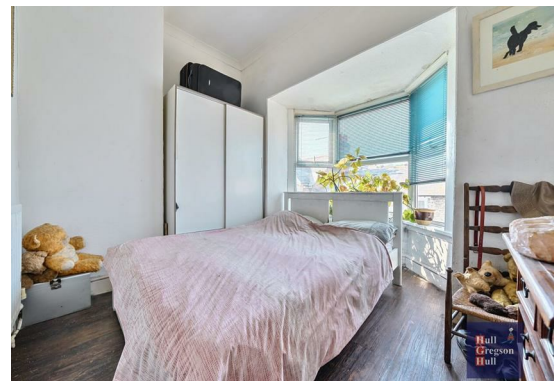
## 130 High Street

Swanage, BH19 2PA

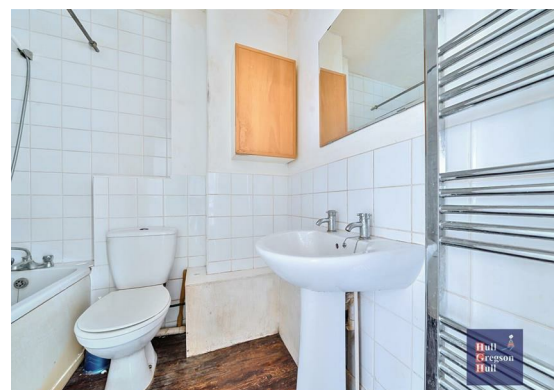
- One Bedroom Top Floor Apartment
- Allocated Parking Space
- Beautiful Panoramic Views of Purbeck Hills towards Bay
- Spacious Living/Dining Area
- Share of Freehold
- Ideal First Time Buy
- Ready for Refurbishment
- Close to Local Amenities
- Perfect Buy to Let
- Short Distance from the Beach







We are delighted to present this one bedroom apartment, situated just a short walk from Swanage Town Centre. Features include high ceilings, stunning panoramic views over Swanage, and the Purbeck Hills towards the bay. An allocated parking space is included.



This apartment is an ideal first time buy or buy to let, Each apartment owner has a share in the freehold, and the four flats are resident managed.

The property is accessed through a communal entrance and stairs then rise to the top floor. Entering through



the internal door, you are welcomed into a spacious living dining area, with a feature bay window showcasing those beautiful countryside views. There is space for a large sofa, dining table and chairs for two, TV and console, plus further seating in the bay window to enjoy the vista.

From the living area, there is access into the galley kitchen, currently equipped with base and eye-level storage cupboards, inset sink, and space for an oven, fridge, freezer and washing machine.

The cosy bedroom is south-facing and has space for some free-standing furniture.

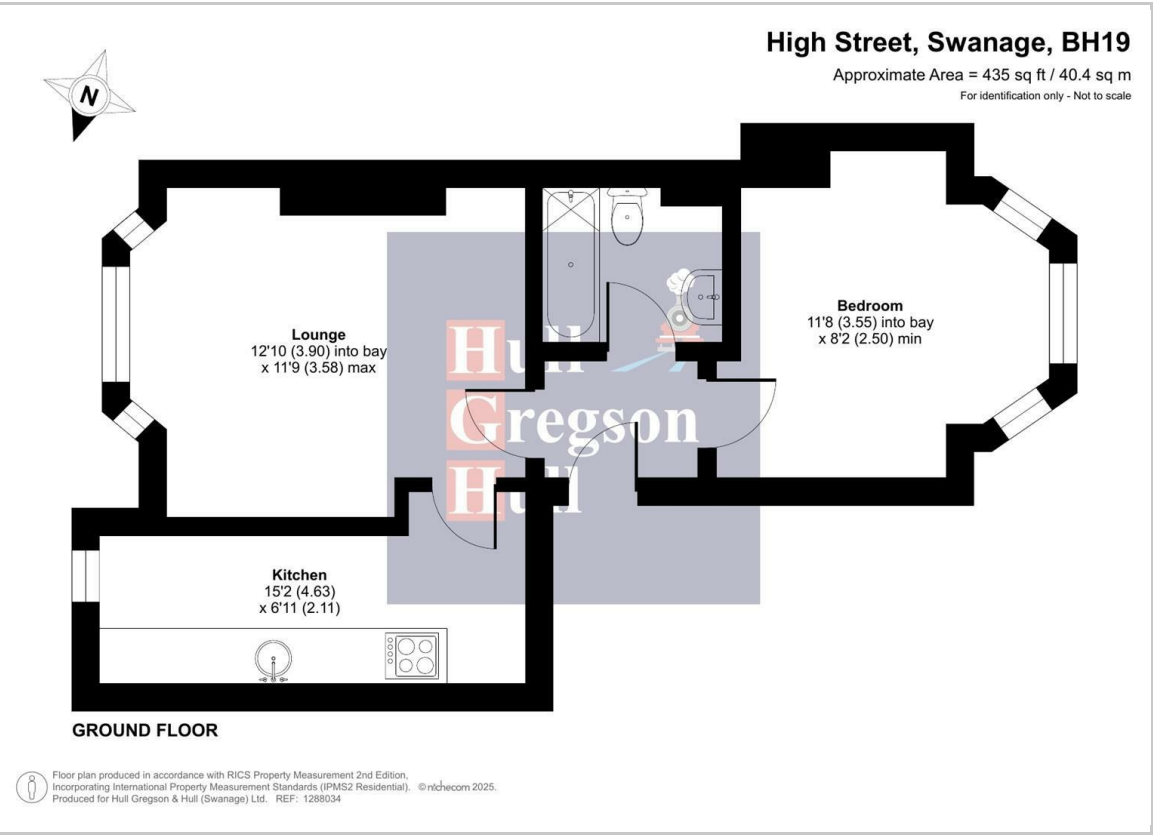
The bathroom comprises bath with shower over, W.C., wash basin and heated towel rail.

The property benefits from an allocated parking space in Manwell Lane, just opposite the apartment building and the property is close to a local amenities.

This flat offers the opportunity to upgrade to taste and is an ideal purchase for first time buyers or buy to let investors

Viewing is highly recommended.





- Lounge**  
12'9" into bay x 11'8" max (3.90 into bay x 3.58 max)
- Kitchen**  
15'2" x 6'11" (4.63 x 2.11)
- Bedroom**  
11'7" into bay x 8'2" min (3.55 into bay x 2.50 min)

**Additional Information.**  
The following details have been provided by the vendor, as required by Trading Standards. These details should be checked by your legal representative for accuracy.

- Property type: First Floor Apartment
- Property construction: Standard
- Tenure: We are advised by the vendors that the property is a share of freehold, with maintenance fees charged on an 'as and when' basis. The building is managed by the four apartment owners. Long term lets are allowed, no holiday lets or short term lets. Pets are permitted with permission from the management company. Lease is approx 960 years.
- Council Tax: Band A
- Mains Electricity
- Mains Water & Sewage: Supplied by Wessex Water
- Heating Type: Gas
- Broadband/Mobile signal/coverage: For further details please see the Ofcom Mobile Signal & Broadband checker.  
checker.ofcom.org.uk/

**Disclaimer.**  
These particulars, whilst believed to be accurate are set out as a general outline only for guidance and do not constitute any part of an offer or contract. Intending purchasers should not rely on them as statements of representation of fact but must satisfy themselves by inspection or otherwise as to their accuracy. All measurements are approximate. Any details including (but not limited to): lease details, service charges, ground rents, property construction, services, & covenant information are provided by the vendor, and you should consult with your legal advisor/ satisfy yourself before proceeding. No person in this firm's employment has the authority to make or give any representation or warranty in respect of the property.

