



Acton, Langton Matravers

Swanage BH19 3LB



Freehold



Acton

Langton Matravers Swanage,
BH19 3LB

- Characterful Cottage
- Original Features With A Modern Touch
- Courtyard Garden
- Two Double Bedrooms
- Log Burner In Sitting Room
- Peaceful Location
- Thoughtfully Designed
- Wooden Flooring Throughout
- Immaculately Presented
- Sought After Village Location





Nestled in the charming hamlet of Acton, near the stunning Priests Way footpath leading to Swanage and the breath-taking Jurassic Coast, this delightful mid-terrace Purbeck stone, ex-quarryman's cottage offers a perfect blend of character and comfort. The property has been tastefully decorated, showcasing its original features such as exposed beams and flagstone flooring, which create a warm and inviting atmosphere.

Upon entering through a stable door, you are welcomed into a cosy living room that boasts a mix of flagstone and wood flooring, complemented by



a charming log burner that promises to keep you warm during the cooler months. The kitchen/diner is well-equipped with modern fitted kitchen offering a range of wall and base level units. Integrated appliances include an eye-level oven, microwave, four-ring induction hob, washing machine and dishwasher. There is ample space for a free-standing fridge/freezer.

The cottage features two bedrooms, with the first being a spacious double room that overlooks the garden, adorned with exposed timber beams and wood flooring. The second bedroom is a comfortable twin room, complete with a Velux window and fitted wardrobes, making it an ideal space for guests or family.

The bathroom is fitted with a fitted cupboards with inset sink, a walk-in shower with glazed sliding doors and water board surround and low level WC.

Outside, the garden is primarily paved, featuring a raised seating area at the front, perfect for enjoying the fresh air. An original working well is positioned in the front garden, while a spacious dry stone shed provides ample storage for bikes and outdoor equipment.

This property is not only a wonderful home but also presents an excellent opportunity as a holiday retreat or a 'Buy To Let' investment. There are dogs walks aplenty nearby. This is truly a marvelous place to relax and unwind.

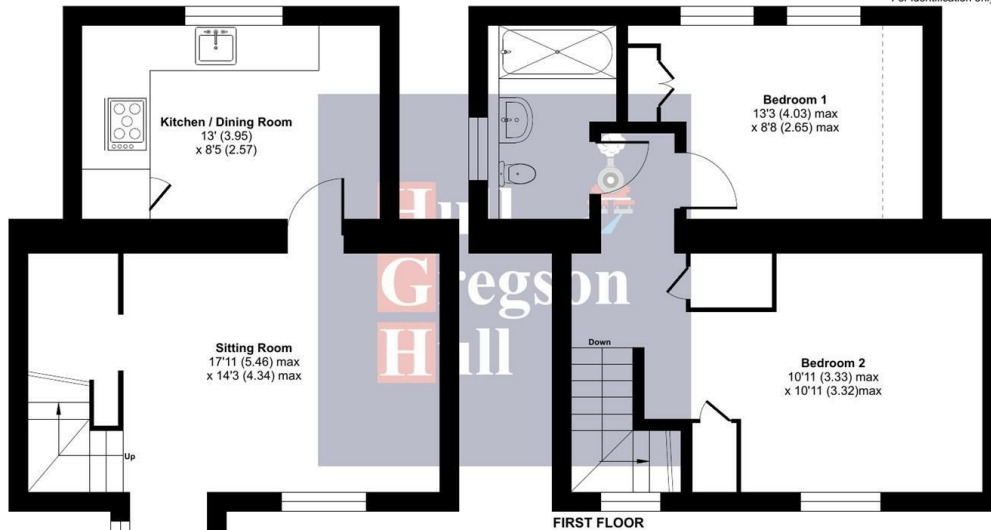




Alma Cottages, Acton, Langton Matravers, Swanage, BH19

Denotes restricted
head height

Approximate Area = 680 sq ft / 63.1 sq m
Limited Use Area(s) = 17 sq ft / 1.5 sq m
Total = 697 sq ft / 64.6 sq m
For identification only - Not to scale



GROUND FLOOR

Floor plan produced in accordance with RICS Property Measurement 2nd Edition,
Incorporating International Property Measurement Standards (IPMS2 Residential). © nrichcom 2025.
Produced for Hull Gregson & Hull (Swanage) Ltd. REF: 1281074



Kitchen / Dining Room 12'11" x 8'5" (3.95 x 2.57)

Sitting Room 17'10" x 14'2" (5.46 x 4.34)

Bedroom 1 13'2" x 8'8" (4.03 x 2.65)

Bedroom 2 10'11" x 10'10" (3.33 x 3.32)

Bathroom

Additional Information.

The following details have been provided by the vendor, as required by Trading Standards. These details should be checked by your legal representative for accuracy.

Property type: Terraced Cottage

Property construction: Standard

Mains Electricity

Mains Water & Sewage: Supplied by Wessex Water

Heating Type: Electric

Broadband/Mobile signal/coverage: For further details please see the Ofcom Mobile Signal & Broadband checker.
checker.ofcom.org.uk/

Disclaimer.

These particulars, whilst believed to be accurate are set out as a general outline only for guidance and do not constitute any part of an offer or contract. Intending purchasers should not rely on them as statements of representation of fact but must satisfy themselves by inspection or otherwise as to their accuracy. All measurements are approximate. Any details including (but not limited to): lease details, service charges, ground rents, property construction, services, & covenant information are provided by the vendor, and you should consult with your legal advisor/ satisfy yourself before proceeding. No person in this firm's employment has the authority to make or give any representation or warranty in respect of the property.

