

BROTHERS

PROPERTY MANAGEMENT



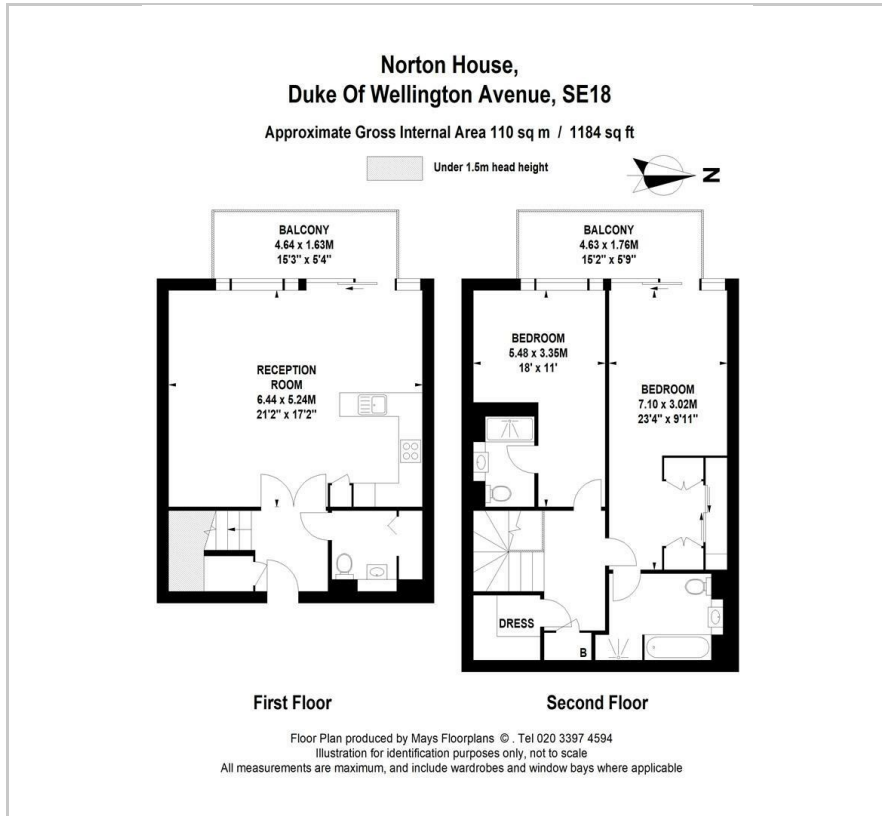
2003 Norton House

London, SE18 6PD

£3,600 Per month



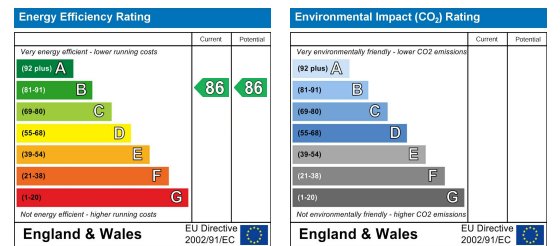
Floor Plan



Area Map



Energy Efficiency Graph



Viewing

Please contact our Brothers Property Management Office on 020 4526 6150 if you wish to arrange a viewing appointment for this property or require further information.

- Split-Level Penthouse
- Fully Furnished
- 8 Minutes to Canary Wharf (Elizabeth Line)
- Two Balconies
- River Views
- West Facing
- 20th/21st Floor
- Approx. 1,184 sq ft
- 24-hour Concierge
- Residents Gym & Swimming Pool

A brand new Penthouse apartment with river views, within 5 minutes' walk of the New Elizabeth Line (Crossrail, 8 minutes to Canary Wharf).



These particulars, whilst believed to be accurate are set out as a general outline only for guidance and do not constitute any part of an offer or contract. Intending purchasers should not rely on them as statements of representation of fact, but must satisfy themselves by inspection or otherwise as to their accuracy. No person in this firm's employment has the authority to make or give any representation or warranty in respect of the property.