

BROTHERS

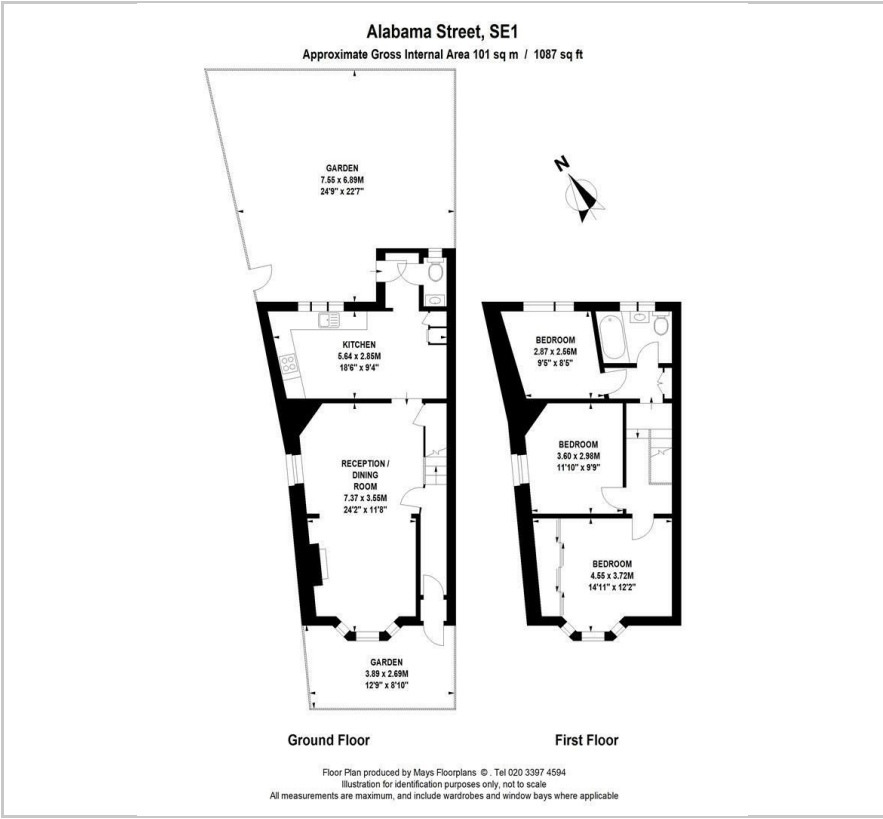
PROPERTY MANAGEMENT



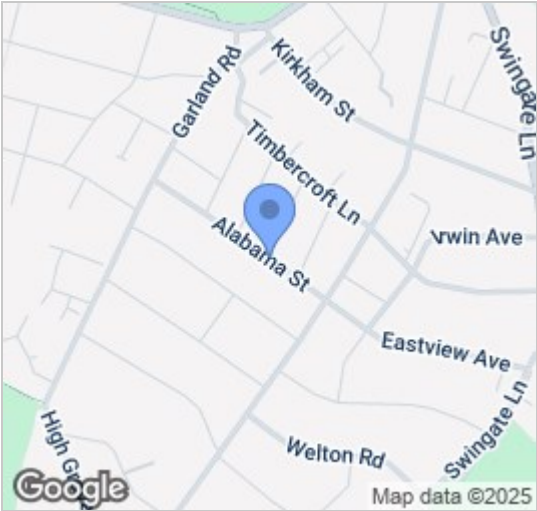
60 Alabama Street
London, SE18 2SL
£2,000 Per month



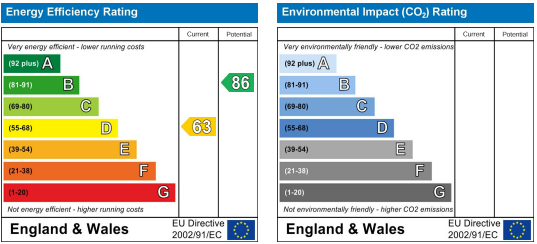
Floor Plan



Area Map



Energy Efficiency Graph

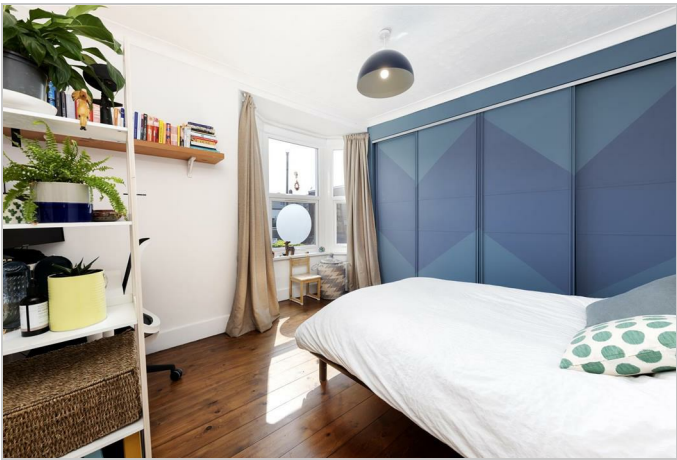


Viewing

Please contact our Brothers Property Management Office on 020 4526 6150 if you wish to arrange a viewing appointment for this property or require further information.

- Three Double Bedrooms
- Wooden & Tiled Floors
- Large West Facing Garden
- Modern Kitchen & Appliances
- 30 minutes' to Canary Wharf via Elizabeth Line
- Sympathetically Refurbished
- Double Reception/Dining Room
- Recently Refurbished Bathroom
- End-of-Terrace
- 40 Minutes' to Liverpool Street via Elizabeth Line

A well presented three bedroom end of terrace house with a west facing garden.



These particulars, whilst believed to be accurate are set out as a general outline only for guidance and do not constitute any part of an offer or contract. Intending purchasers should not rely on them as statements of representation of fact, but must satisfy themselves by inspection or otherwise as to their accuracy. No person in this firm's employment has the authority to make or give any representation or warranty in respect of the property.