

1st Call

SALES AND LETTINGS



Hartington Road, Southend On Sea, SS1 2HS

£695 PCM



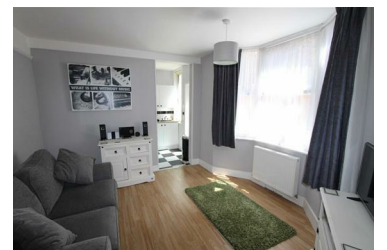
Available from 11th September 2026 is this superb example of a studio flat. The property is presented in excellent decorative order throughout and benefits from a modern kitchen and shower room along with a courtyard space with direct access. The per calendar month rent includes Bills apart from the electricity and Council Tax. The property is conveniently located for Southend Sea Front, The Royals Shopping Centre and South Essex College.

Tenants Criteria:

Annual Income Required - £20, 850 per annum.

Accepted Forms of Income - Salary, Pensions, Child Tax Credit, Child Benefits

- Ground Floor Studio
- Modern Kitchen
- Courtyard Space
- Modern Decoration
- Lounge/Bedroom
- Shower Room
- Double Glazed



193 Woodgrange Drive, Southend On Sea, Essex, SS1 2SG

Tel: 01702616416 Email: info@1stcallproperty.com <https://www.1stcallproperty.com>