

1st Call

SALES AND LETTINGS



Christchurch Road, Southend-On-Sea, SS2 4JS

£1,450 PCM

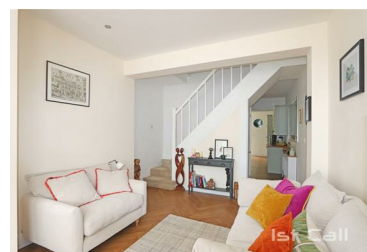


Nestled on Christchurch Road in the vibrant area of Southend-On-Sea, this beautifully presented end terrace house AVAILABLE NOW!

Upon entering, you are greeted by a spacious front lounge that exudes warmth and comfort, perfect for relaxing or entertaining guests. The heart of the home is undoubtedly the recently fitted kitchen/diner, which boasts integrated appliances and ample space for dining, making it an ideal setting for family meals or gatherings with friends.

The first floor features two generously sized double bedrooms, with the master bedroom benefiting from an ensuite, providing a touch of luxury and convenience. Additionally, a well-appointed bathroom completes the upper level, ensuring that both residents and guests have access to modern facilities.

- Beautifully Presented Two Bedroom House
- Modern Fitted Kitchen/ Breakfast Room
- Master Bedroom With En Suite
- Gas Central Heating
- Off Street Parking & Approx. 50' Rear Garden
- Spacious Lounge/ Diner
- Two Double Bedrooms
- Spacious & Beautifully Appointed Bathroom
- Fully Double Glazed



193 Woodgrange Drive, Southend On Sea, Essex, SS1 2SG

Tel: 01702616416 Email: info@1stcallproperty.com <https://www.1stcallproperty.com>