

1st Call

SALES AND LETTINGS



Park Lane, Southend On Sea, SS1 2SL

£1,100 PCM

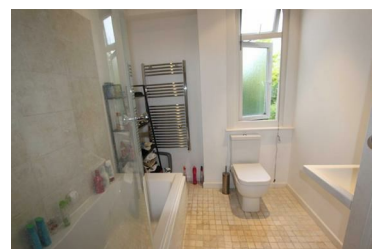


Available from 20th October 2025 is this two bedroom first floor apartment located within a short walk of Southend East c2c Mainline Station. The accommodation includes a 17' lounge, 16' master bedroom, three piece modern bathroom suite and a contemporary fitted kitchen. The property has the advantage of off street parking and its own private entrance.

Tenants Criteria:

- Annual Income Required - £33,000 per annum.

- Two Bedrooms
- 17' Lounge
- Contemporary Kitchen
- Available from 20th October 2025
- Short Walk To Station
- Three Piece Bathroom Suite
- Double Glazing



193 Woodgrange Drive, Southend On Sea, Essex, SS1 2SG
Tel: 01702616416 Email: info@1stcallproperty.com <https://www.1stcallproperty.com>