

# LANES

SALES & LETTINGS

## Dynasty Mews, Bletchley



A brand new 3-bedroom detached chalet style bungalow situated within Central Bletchley on a small private development. The property is finished to high specification with the kitchen having built in appliances and granite worktops, a separate dining room, a downstairs wet room and underfloor heating to the ground floor. Outside there are front and back gardens and double carport.

The accommodation briefly comprises: - entrance hall, kitchen, lounge, dining room, bedroom 3/family room, wet room, two further bedrooms, bathroom, double carport, gardens to front and rear.

**Three Bedrooms**

**Detached Chalet Bungalow**

**NHBC Warranty**

**PVCu Double Glazed**

**Double Carport**

**Underfloor Heating**

**Brand New**

**Built In Appliances**

**Separate Dining Room**

## £410,000

# Dynasty Mews, Bletchley, Milton Keynes, Bucks, MK2 2FX

## GROUND FLOOR

3.59m (11'9") x 3.04m (10')

Window to front, under floor heating.

### **ENTRANCE HALL**

Stairs rising to first floor accommodation with storage cupboard under, laminate flooring with under floor heating.

### **KITCHEN**

3.59m (11'9") x 2.94m (9'8")

Fitted with a matching range of base and eye level units with underlighting and granite worktop space over, 1+1/2 bowl sink unit with single drainer and mixer tap, integrated fridge/freezer, dishwasher and washing machine, built-in electric fan assisted oven with four ring electric hob and extractor hood over, built-in microwave, window to front, laminate flooring with under floor heating, door to garden.



### **LOUNGE**

4.06m (13'4") x 3.81m (12'6")

Laminate flooring with under floor heating, French doors to garden.

### **DINING ROOM**

3.81m (12'6") x 3.17m (10'4")

Window to rear, laminate flooring with under floor heating.

### **BEDROOM THREE/FAMILY ROOM**

### **WET ROOM**

Fitted with three piece white suite comprising pedestal wash hand basin, tiled shower area with fitted shower and low-level WC, tiled surround, heated towel rail, frosted window to side, tiled flooring with under floor heating.



## FIRST FLOOR

### **LANDING**

Skylight, airing cupboard housing wall mounted boiler, access to loft storage space.

### **BEDROOM ONE**

6.02m (19'9") x 3.60m (11'9")

Window to rear, radiator.

### **BEDROOM TWO**

6.07m (19'10") x 3.58m (11'8")

Window to front, radiator.

### **BATHROOM**

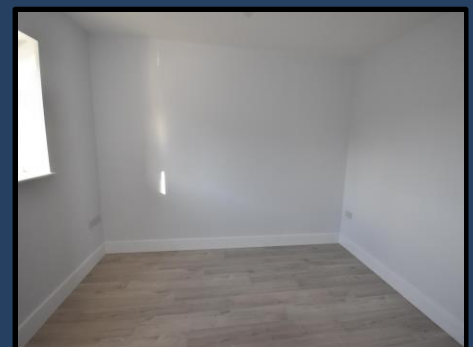
Fitted with three piece white suite comprising panelled bath with independent shower over, pedestal wash hand



Lounge



Dining Room



Bedroom Three

basin and low-level WC, tiled surround, heated towel rail, skylight, tiled flooring.



## **OUTSIDE**

### **FRONT**

Paved path to front door, remainder laid to lawn, double carport

### **REAR**

Paved patio, remainder laid to lawn, enclosed by timber fencing, gates to either side gives access to the front.



## **VIEWING**

By prior appointment through Lanes Sales and Lettings.

## **PROCLAMATION**

These Particulars, whilst believed to be accurate are set out as a general outline only for guidance and do not constitute any part of an offer or contract. Intending purchasers should not rely on them as statements of representation of fact, but must satisfy themselves by inspection or otherwise as to their accuracy. No person in this firm's employment has the authority to make or give any representation or warranty in respect of the property. We have not carried out a survey, nor tested the services, appliances or specific fittings. Room sizes should not be relied upon for measuring of fitted carpets etc.

## **SERVICES**

Lanes Sales and Lettings offer vendors and prospective purchasers completely independent mortgage advice from the Mortgage Advice Bureau.

## **DRAFT PARTICULARS**

These details have been submitted to the vendor/s of this property but as yet have not been approved by them. Therefore, we cannot guarantee their accuracy and they are distributed on this basis.

## **AGENTS NOTE**

This property is currently being built and specification may change. Photos are of identical properties built by the same builder on the same development. Sizes are taken from architect's drawings.



*Bedroom Two*



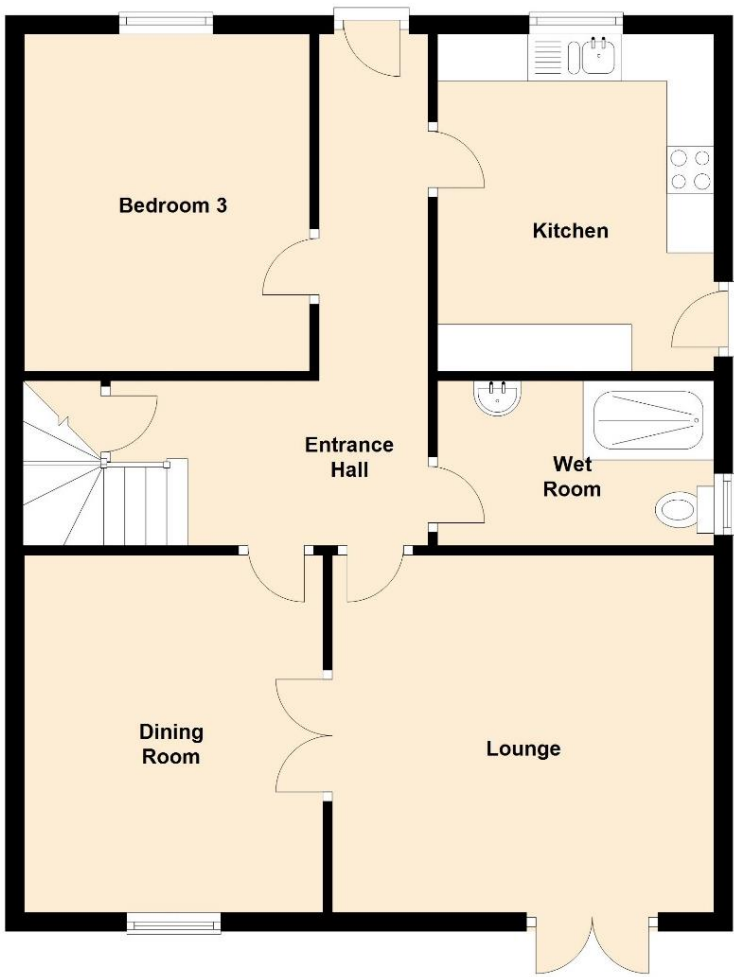
*Bedroom One*



*Kitchen*

These plans are included as a service to our customers and are intended as a GUIDE TO LAYOUT only. Dimensions are approximate. **DO NOT SCALE.**

### Ground Floor



### First Floor

