



**MAY WHETTER & GROSE**

**11 FORE STREET, ST AUSTELL, CORNWALL PL25 5PX**  
**£375 PER MONTH**



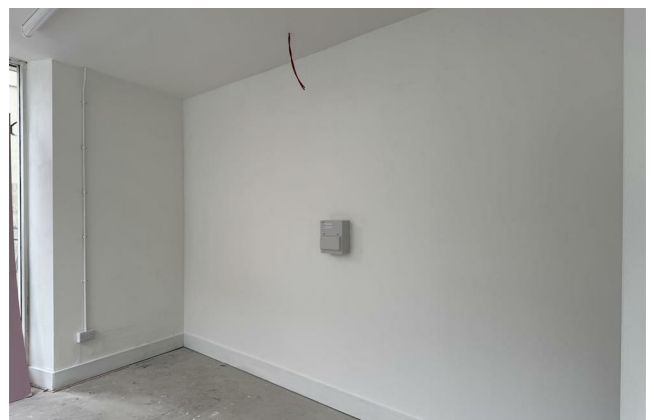
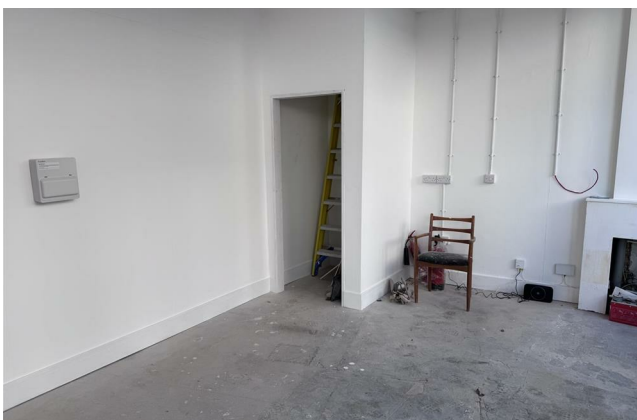
A LOCK UP GROUND FLOOR SHOP UNIT

CENTRAL TOWN LOCATION

EXCELLENT FRONT DISPLAY WINDOWS

INCORPORATES WC

EPC AWAITING



The Premises

The subject premises are situated on Fore Street, St Austell's main shopping street. National retailers in Fore Street include Subway, H Samuels Jewellers, Specsavers, WH Smith & Boots. The premises is also close to the new town centre development White River Place with further National including Superdrug, Lloyds, Argos and T K Maxx. It offers an excellent trading position ideally suited to take advantage of the town's passing footfall. St Austell town centre offers a wide range of shopping facilities.

St Austell

St Austell is the largest town with it's BID promotion in Cornwall approximately 40 miles from Plymouth and 14 miles from Truro. The town benefits from mainline rail services plus good road communications served by the A390. St Austell is approximately 6 miles from the A30 trunk road - the primary route linking Cornwall and the M5 motorway. Currently being upgraded St Austell to A30 link road.

The Shop

18'0" m max x 9'6" m max (5.5 m max x 2.9 m max)



With good display windows to Fore Street and Vicarage Hill. Glazed front entrance door. Electric lighting and power. WC

Business Rates



The shop has just been part of a conversion of the larger building with the Landlord awaiting a new business rates application.

Viewing

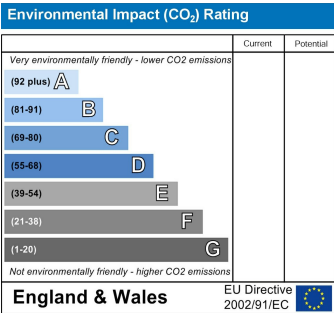
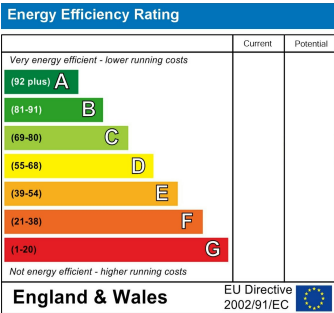
By telephone appointment with the Owners Sole Agent: MAY WHETTER AND GROSE, Bayview House, St Austell Enterprise Park, Treverbyn Road, Carclaze, PL25 4EJ

TEL: 01726 222967.

robin@maywhetter.co.uk  
nathan@maywhetter.co.uk

EPC

The shop has just been part of a conversion of the larger building with the Landlord awaiting a new epc.





**Important Notice** MISREPRESENTATION ACT 1989 and PROPERTY MISDESCRIPTIONS ACT 1991

Messrs. May, Whetter & Grose for themselves and for vendors and lessors of this property whose agents they are give notice that: (i) the particulars are set out as a general outline for the guidance of intended purchasers or lessees, and do not constitute, nor constitute part of, an offer or contract; ii) all descriptions, dimensions, reference to condition and necessary permissions for use and occupation, and other details are given without responsibility and any intending purchasers or tenants should not rely on them as statements or presentations of fact but must satisfy themselves by inspection or otherwise as to the correctness of each of them. (iii) no person in the employment of Messrs. May, Whetter & Grose has any authority to make or give any representation or warranty whatever in relation to the property.

