



57 WEST STREET,
FOWEY, PL23 1PL
GUIDE PRICE £1,250,000



Important Notice MISREPRESENTATION ACT 1989 and PROPERTY MISDESCRIPTIONS ACT 1991
Messrs. May, Whetter & Grose for themselves and for vendors and lessors of this property whose agents they are give notice that: (i) the particulars are set out as a general outline for the guidance of intended purchasers or lessees, and do not constitute, nor constitute part of, an offer or contract; ii) all descriptions, dimensions, reference to condition and necessary permissions for use and occupation, and other details are given without responsibility and any intending purchasers or tenants should not rely on them as statements or presentations of fact but must satisfy themselves by inspection or otherwise as to the correctness of each of them. (iii) no person in the employment of Messrs. May, Whetter & Grose has any authority to make or give any representation or warranty whatever in relation to the property.



A STUNNING WATERFRONT, 3 STOREY VICTORIAN PROPERTY IN EXCELLENT DECORATIVE ORDER WITH GARAGE AND PARKING, SEPARATE GARDEN COTTAGE, TERRACED GARDENS AND WATER ACCESS. BOATHOUSE WITH QUAY, ALL WITH BEAUTIFUL HARBOUR VIEWS.



57 West Street, Polruan, Fowey, PL23 1PL

The property has been in the same ownership for 40 years and is a much loved and cared for family home. It offers the rare opportunity to buy a house in a prime position within the village, overlooking the harbour, with the added benefit of a garage and parking, water access, quay and a boathouse with development potential.

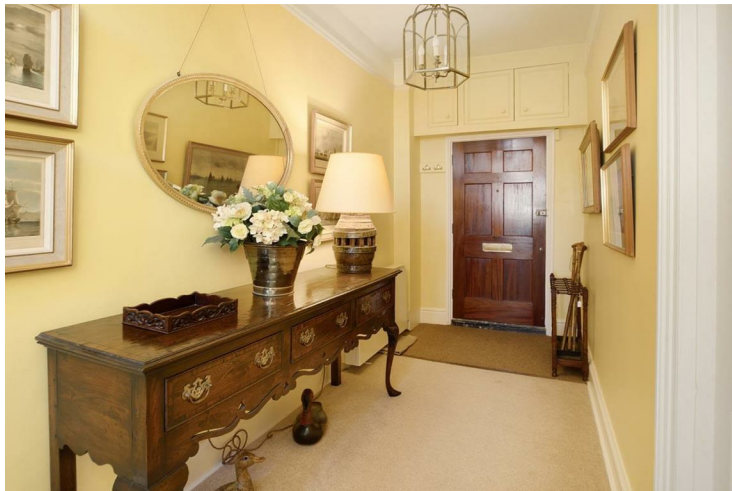
The semi-detached Victorian property is on West Street, which runs parallel to the waterfront, offering light and spacious accommodation over three floors.

There are stunning views from all the main rooms across the harbour to Fowey. The entrance hall is at first floor level with stairs leading down to the ground floor, which is semi open-plan, with a good sized drawing room with bookcases, windowseat and a fireplace.

There is a step to a raised level dining room and a fitted kitchen, with integrated appliances. A door from the kitchen leads to the outside and sheds, with steps up to the street. A glazed door from the drawing room opens to the paved terraces with open views over the harbour. Off the entrance hall, on the first floor, is the principal bedroom, with the original fireplace, bookcases and shelving. There is an en suite bathroom and a dressing area with fitted wardrobes and generous storage. Stairs rise from the hall to the second floor with a second bathroom and two more bedrooms, both with original fireplaces and fitted wardrobes.

To the front of the house, in the terraced garden, is a stone built cottage, which could provide a 4th bedroom and self contained accommodation. It has a delightful sitting room/bedroom with glazed doors opening to a paved terrace overlooking the harbour and beyond. There is a separate cloakroom and below the terrace, a kitchen area. A terrace runs along the front of the house with wonderful harbour views. From here, steps lead down to a terraced and walled garden area overlooking the estuary.

The waterfront can be accessed via steps from the terraces, leading down to the property's quay and boathouse. The boathouse has water and electric supply, and a spacious area on the first floor. The generously sized stone built garage has the added benefit of an attic with velux window, hot water supply and electricity.



Polruan is a picture postcard village on the east bank of the River Fowey Estuary, on the spectacular South Cornish coast, opposite the harbour town of Fowey.

It is an ancient fishing and shipbuilding community with a long maritime history, and has a thriving boatyard, offering a maintenance service to both commercial and leisure customers. The village is nestled into the hillside and is surrounded by water on three sides.

As well as Town Beach and Polruan Quay Beach, it features a maze of narrow streets, alleys and flights of steps between the cottages. It has a thriving community, and the harbour offers a safe and protected haven for yachts and boats. There are two pubs: the Luggier Inn and the Russell Inn, cafés and a village store, and its unspoiled charm has been retained.

There is a regular passenger ferry across the estuary to the pretty harbour town of Fowey, which has a more extensive range of shops, restaurants, pubs and galleries. As well as the popular Fowey Regatta, it hosts the annual Festival of Art and Literature. There is a car ferry across the river from nearby Bodinnick to Fowey.

The South West Coast Path is accessed from both sides of the estuary and provides some spectacular coastal walking, passing some remote and beautiful beaches. The Polruan 'coast and creek' walk takes in fabulous views of Lantic Bay, with its wide beaches and turquoise waters.

The Fowey Estuary is one of the most beautiful and unspoilt estuaries in Cornwall, running inland as far as Lostwithiel, and branches off to various tributary creeks, namely Lerryn, Penpoll and Pont.. The deep water of the river makes it an important port and a magnet for yachtsmen, and has inspired many authors, including Daphne du Maurier.

There are many excellent opportunities 'on the doorstep' for sailing, fishing, canoeing and other water sports. The train stations at both Liskeard and Par provide mainline connections to London Paddington and Penzance, via Plymouth and Exeter. From the M5 at Exeter, the route gives the option to travel to the area via the A38 and Plymouth, or the A30 past Launceston.