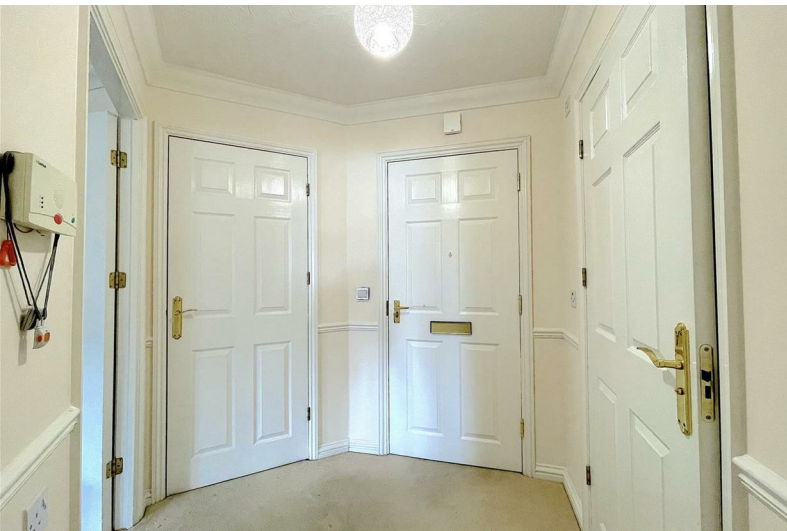




21, Park View Lodge East Street

Faversham, ME13 8AY

Offers in excess of £205,000



21, Park View Lodge East Street

Faversham, ME13 8AY

Offers in excess of £205,000



- One Bedroom First Floor Retirement Apartment
 - 24 Hours Careline System
 - Self-Contained Private Apartment
 - Owners' Lounge
 - Town Centre Location
 - Site Manager Available 5 Days a Week
 - Communal Landscaped Garden
 - Fully Fitted Kitchen
 - Guest Suite for Visitors
 - Secure & Private
- Over 55s Only:
- apartments. The property is safe and secure, with a site manager on hand throughout the day and a Careline system which is monitored 24 hours a day, 365 days a year.
- Owners can make use of the fully equipped laundry room, owners' lounge, communal garden, private off-street car parking and guest suite for when friends and family come to stay. The apartment has its own front door and is completely self-contained, providing privacy when required.

We are delighted to be marketing this one bedroom, first floor retirement apartment which is discovered in the sought after development of Park View Lodge, Faversham.

The apartment offers comfortable accommodation which includes; a spacious entrance hall, with a large storage cupboard, an open-plan living/ dining room which benefits from a Juliette balcony, a large double bedroom, kitchen and bathroom. The kitchen offers ample cupboard and counter-top space, an electric oven and hob. The bathroom includes w/c, basin and shower over bath.

Park View Lodge is a prestigious retirement development built in 2007 in close proximity to Faversham town centre. The development is a friendly community of 36 one and two bedroom

The building contains a lift and the whole site is completely accessible by wheelchair. The nearest bus stop, shop and the recently refurbished Faversham Recreation Ground are only 100 yards away. Faversham post office and town centre is 0.2 miles from Park View Lodge.



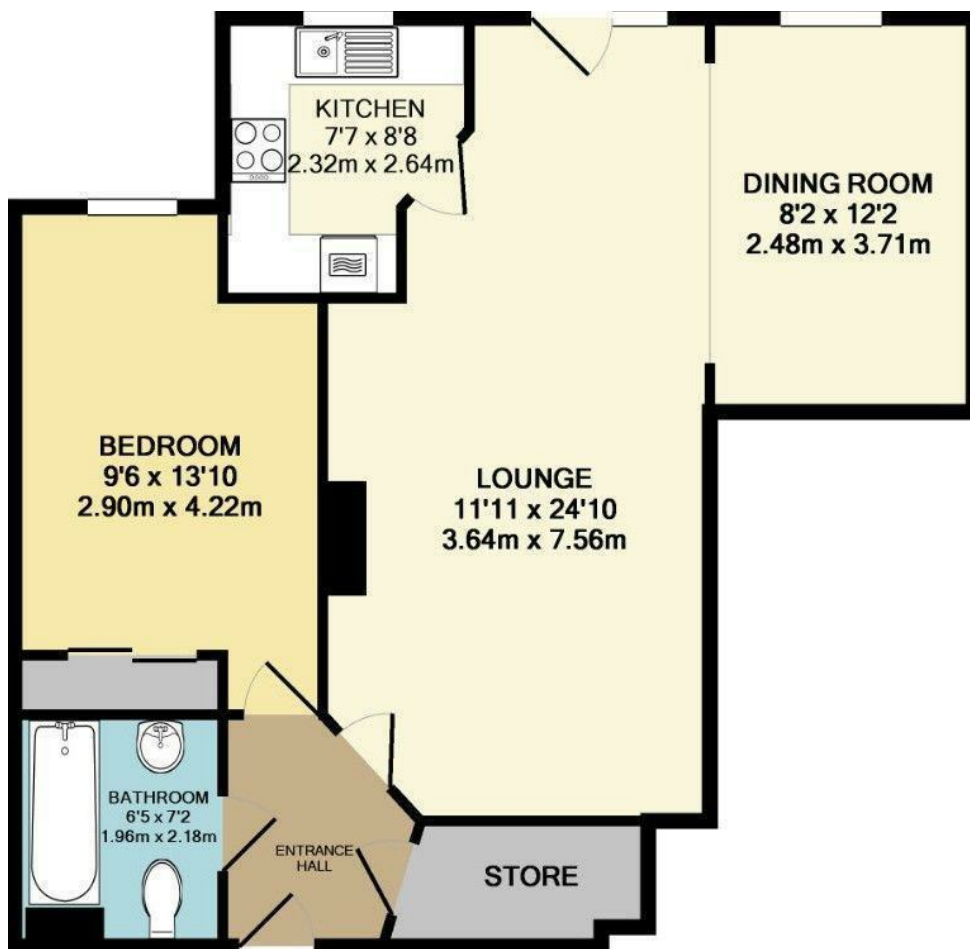
Faversham town centre is full of independent retailers, coffee shops, pubs and restaurants, as well as a popular market held three days a week. Held under the iconic Guildhall; Faversham Market is believed to be the oldest in Kent, having been recorded in the Domesday book in 1086.

Faversham is steeped in history with its oldest building dating back to 1234. A lot of Faversham's character comes from its charming architecture with buildings surviving from the medieval, Georgian and Victorian periods, through to the present day. The town is also home to Britain's oldest brewery – Shepherd Neame.

Viewing highly recommended. To book your viewing, please contact Iliffe & Iliffe.



Floor Plan



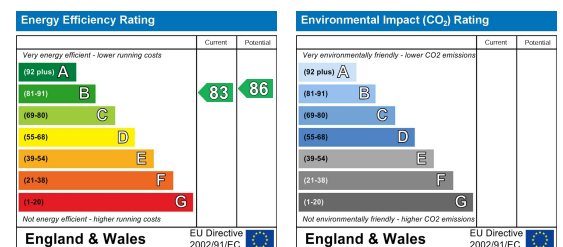
Map



Viewing

Please contact us on 01795 391 190 if you wish to arrange a viewing appointment for this property or require further information.

Energy Efficiency Graph



These particulars, whilst believed to be accurate are set out as a general outline only for guidance and do not constitute any part of an offer or contract. Intending purchasers should not rely on them as statements of representation of fact, but must satisfy themselves by inspection or otherwise as to their accuracy. No person in this firm's employment has the authority to make or give any representation or warranty in respect of the property.

