

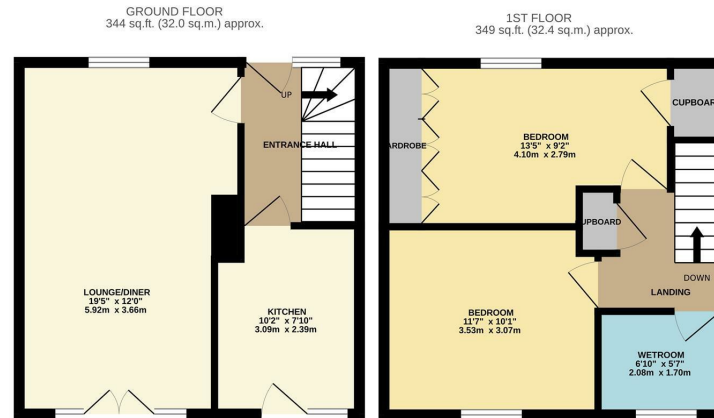


Long Ley, Harlow, CM20 3NH  
£325,000

2 1 1 D

# Long Ley, Harlow, CM20 3NH

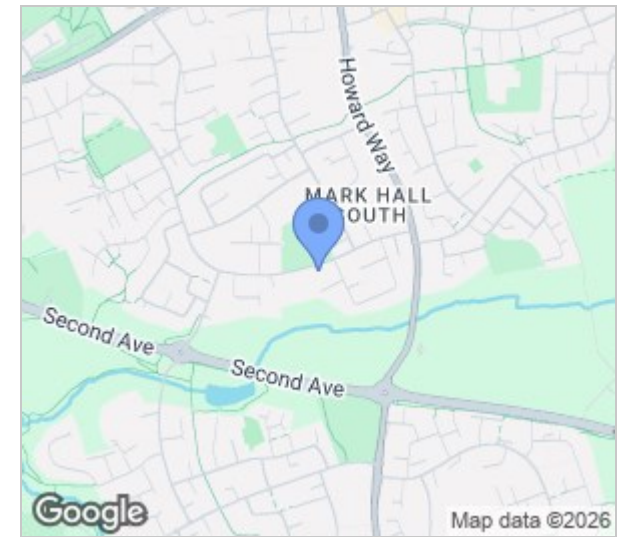
Offered with NO CHAIN is this two double bedroom end terrace home with potential for a large driveway (subject to planning) with a large, south facing rear garden. On the ground floor there is an entrance hallway leading to a large lounge diner and a kitchen with a range of fitted wall and base units, whilst upstairs there are two double bedrooms, with fitted wardrobes to the master and a modern wet room. Outside the south facing rear garden is mainly laid to lawn with a patio area, shed and side access leading out to the front garden. Long Ley is located between Bush Fair and The Stow shopping areas, with excellent local schools, shops and open fields within walking distance.



LLUREYLANDJOHNSON

TOTAL FLOOR AREA: 693 sq.ft. (64.4 sq.m.) approx.

Whilst every attempt has been made to ensure the accuracy of the floorplan contained here, measurements of doors, windows, rooms and any other items are approximate and no responsibility is taken for any error, omission or mis-statement. This plan is for illustrative purposes only and should be used as such by any prospective purchaser. The services, systems and appliances shown have not been tested and no guarantee as to their operability or efficiency can be given.  
Made with Metropix C2025



Energy Efficiency Rating		
	Current	Potential
Very energy efficient - lower running costs		
(92 plus) <b>A</b>		
(81-91) <b>B</b>		
(69-80) <b>C</b>		
(55-68) <b>D</b>		
(39-54) <b>E</b>		
(21-38) <b>F</b>		
(1-20) <b>G</b>		
Not energy efficient - higher running costs		
	62	69
England & Wales	EU Directive 2002/91/EC	

Environmental Impact (CO <sub>2</sub> ) Rating		
	Current	Potential
Very environmentally friendly - lower CO <sub>2</sub> emissions		
(92 plus) <b>A</b>		
(81-91) <b>B</b>		
(69-80) <b>C</b>		
(55-68) <b>D</b>		
(39-54) <b>E</b>		
(21-38) <b>F</b>		
(1-20) <b>G</b>		
Not environmentally friendly - higher CO <sub>2</sub> emissions		
England & Wales	EU Directive 2002/91/EC	

These particulars, whilst believed to be accurate are set out as a general outline only for guidance and do not constitute any part of an offer or contract. Intending purchasers should not rely on them as statements of representation of fact, but must satisfy themselves by inspection or otherwise as to their accuracy. No person in this firm's employment has the authority to make or give any representation or warranty in respect of the property.

T. 01279 216216 E. info@rjestateagents.co.uk

1 Acorn Mews, Harlow, Essex, CM18 6NA www.rjestateagents.co.uk