



Rushes Mead, Harlow, CM18 6QD  
£395,000

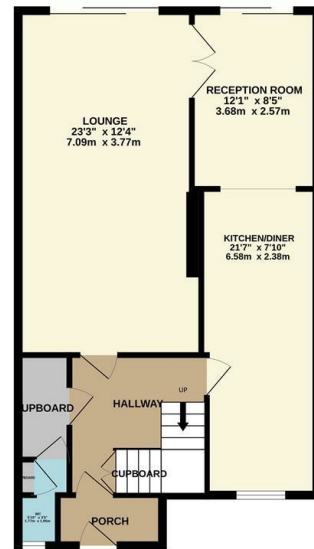
3 1 2 D

# Rushes Mead, Harlow, CM18 6QD

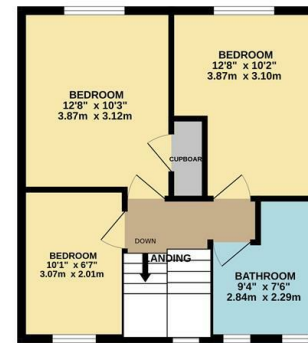
A well presented three bedroom terraced house which has been extended to the ground floor. The property comprises an entrance porch leading to a cloakroom/WC, lounge, kitchen/diner with a range of fitted wall & base level units, landing, three bedrooms and a bathroom with a three piece-suite and separate shower. Outside the rear garden is laid to lawn with a decking area. Rushes Mead is a popular location close to Bush Fair which offers a range of local shops and schools nearby.



GROUND FLOOR  
688 sq.ft. (63.9 sq.m.) approx.



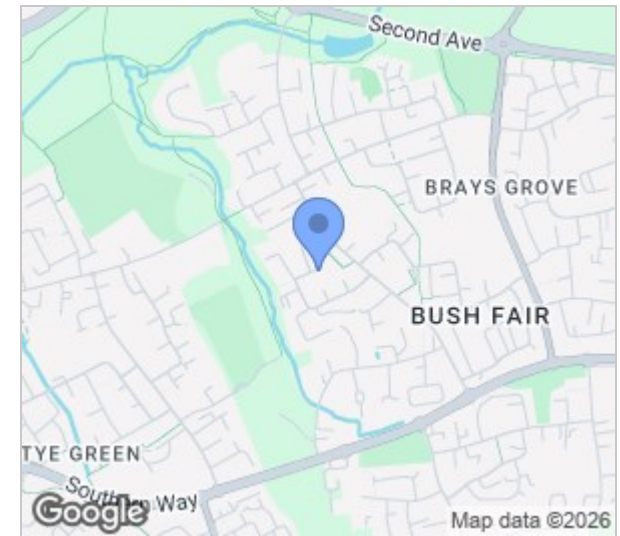
1ST FLOOR  
446 sq.ft. (41.5 sq.m.) approx.



REYLANDJOHNSONIRM

TOTAL FLOOR AREA - 1134 sq.ft. (105.4 sq.m.) approx.

Whilst every attempt has been made to ensure the accuracy of the floorplan contained herein, measurements of doors, windows, rooms and any other items are approximate and no responsibility is taken for any error, omission or mis-statement. This plan is for illustrative purposes only and should be used as such by any prospective purchaser. The services, systems and appliances shown have not been tested and no guarantee as to their condition or efficiency can be given. Made with Metropix 0523.



Energy Efficiency Rating		Current	Potential
Very energy efficient - lower running costs			
(92 plus) <b>A</b>			
(81-91) <b>B</b>			
(69-80) <b>C</b>			
(55-68) <b>D</b>			
(39-54) <b>E</b>			
(21-38) <b>F</b>			
(1-20) <b>G</b>			
Not energy efficient - higher running costs			
		68	80
England & Wales		EU Directive 2002/91/EC	

Environmental Impact (CO <sub>2</sub> ) Rating		Current	Potential
Very environmentally friendly - lower CO <sub>2</sub> emissions			
(92 plus) <b>A</b>			
(81-91) <b>B</b>			
(69-80) <b>C</b>			
(55-68) <b>D</b>			
(39-54) <b>E</b>			
(21-38) <b>F</b>			
(1-20) <b>G</b>			
Not environmentally friendly - higher CO <sub>2</sub> emissions			
England & Wales		EU Directive 2002/91/EC	

These particulars, whilst believed to be accurate are set out as a general outline only for guidance and do not constitute any part of an offer or contract. Intending purchasers should not rely on them as statements of representation of fact, but must satisfy themselves by inspection or otherwise as to their accuracy. No person in this firm's employment has the authority to make or give any representation or warranty in respect of the property.

T. 01279 216216 E. info@rjestateagents.co.uk

1 Acorn Mews, Harlow, Essex, CM18 6NA www.rjestateagents.co.uk