

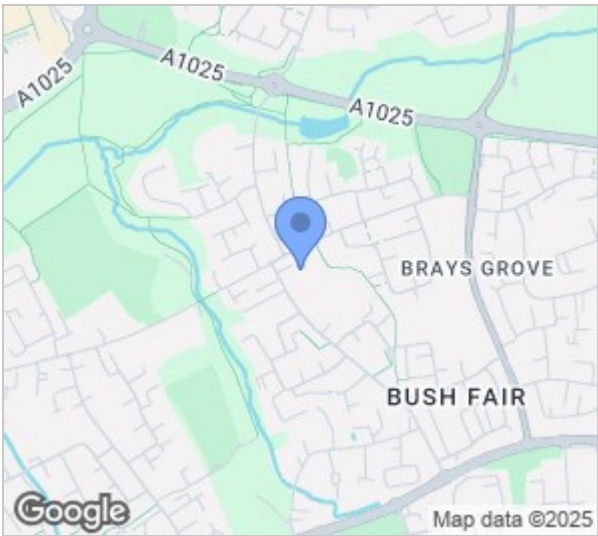
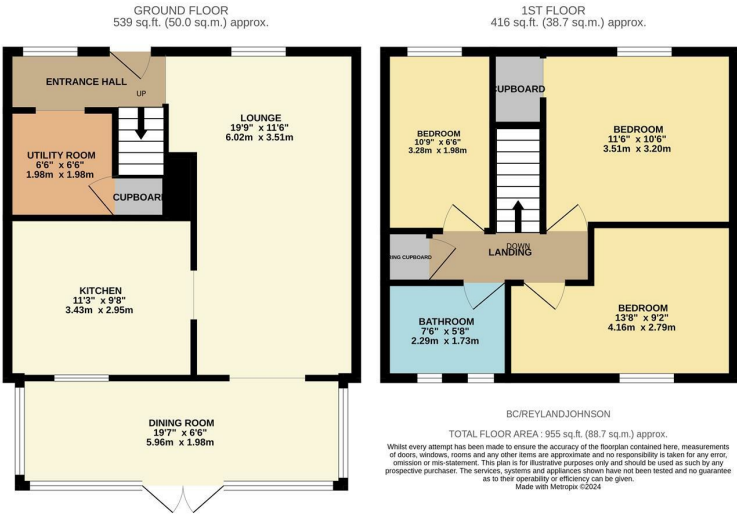


Bushey Croft, CM18 6RG, Harlow, CM18 6RG
£325,000



Bushey Croft, CM18 6RG, Harlow, CM18 6RG

Located in a quiet cul-de-sac is this well presented three bedroom family home with an open plan feel and a large extension. On the ground floor, the entrance hallway leads to a large lounge, modern kitchen with a range of fitted wall and base units, a large extension/dining room and a utility room. Upstairs there are three excellent sized bedrooms and a family bathroom with a stunning three piece suite. The south facing rear garden is mainly laid to lawn with a decked area, with a small green to the front of the property. Bushey Croft is located just off Tendring Road, within walking distance of excellent local schools, shops and open fields.



Energy Efficiency Rating			Environmental Impact (CO ₂) Rating		
	Current	Potential		Current	Potential
Very energy efficient - lower running costs			Very environmentally friendly - lower CO ₂ emissions		
(92 plus) A			(92 plus) A		
(81-91) B			(81-91) B		
(69-80) C			(69-80) C		
(55-68) D			(55-68) D		
(39-54) E			(39-54) E		
(21-38) F			(21-38) F		
(1-20) G			(1-20) G		
Not energy efficient - higher running costs			Not environmentally friendly - higher CO ₂ emissions		
England & Wales	EU Directive 2002/91/EC		England & Wales	EU Directive 2002/91/EC	

These particulars, whilst believed to be accurate are set out as a general outline only for guidance and do not constitute any part of an offer or contract. Intending purchasers should not rely on them as statements of representation of fact, but must satisfy themselves by inspection or otherwise as to their accuracy. No person in this firms employment has the authority to make or give any representation or warranty in respect of the property.