



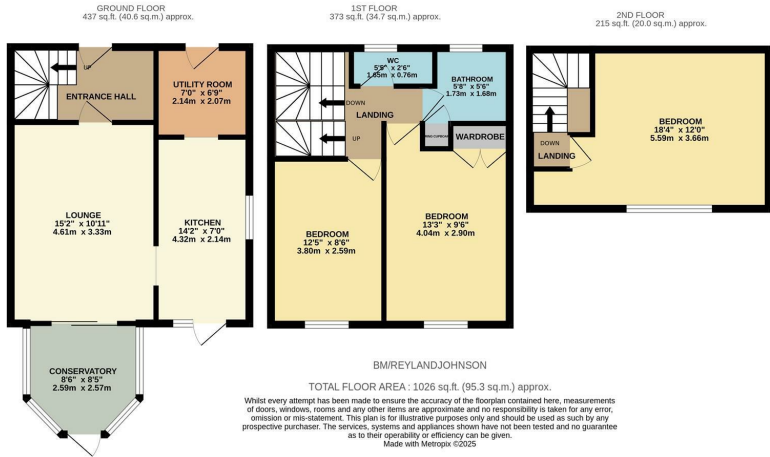
Brockles Mead, Harlow, CM19 4QF
Guide Price £300,000



Brockles Mead, Harlow, CM19 4QF

****Guide Price £300,000 to £315,000****

Offered with NO CHAIN is this three double bedroom end terrace family home located in a quiet cul-de-sac, with views over a park and playing fields. On the ground floor there is an entrance hallway leading to a lounge, kitchen with a range of fitted wall and base units, utility/store room and a conservatory. Upstairs there are two double bedrooms and a family bathroom with separate WC, whilst the top floor has also been converted to create a further large double bedroom. Outside, the west facing rear garden is mainly laid to lawn with a patio area, shed and rear access leading out to a park and playground. Brockles Mead is located just a stones throw from Staple Tye Shopping Centre, within walking distance of local schools and open fields.



Energy Efficiency Rating		
	Current	Potential
Very energy efficient - lower running costs		
(92 plus) A		
(81-91) B		86
(69-80) C		
(55-68) D	61	
(39-54) E		
(21-38) F		
(1-20) G		
Not energy efficient - higher running costs		
England & Wales	EU Directive 2002/91/EC	

Environmental Impact (CO ₂) Rating		
	Current	Potential
Very environmentally friendly - lower CO ₂ emissions		
(92 plus) A		
(81-91) B		
(69-80) C		
(55-68) D		
(39-54) E		
(21-38) F		
(1-20) G		
Not environmentally friendly - higher CO ₂ emissions		
England & Wales	EU Directive 2002/91/EC	

These particulars, whilst believed to be accurate are set out as a general outline only for guidance and do not constitute any part of an offer or contract. Intending purchasers should not rely on them as statements of representation of fact, but must satisfy themselves by inspection or otherwise as to their accuracy. No person in this firms employment has the authority to make or give any representation or warranty in respect of the property.