

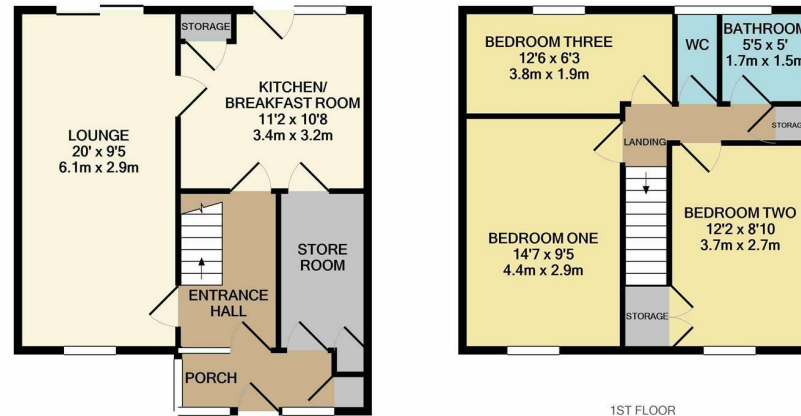


Abbotsweld, Harlow, CM18 6TW
£1,350 Per Month



Abbotsweld, Harlow, CM18 6TW

A three bedroom terraced house available NOW on an unfurnished basis. The property has an entrance porch, hallway, lounge/diner and fitted kitchen which has a range of wall and base units. The first floor has three bedrooms and a family bathroom, there is also a private rear garden which is mainly laid to lawn. Abbotsweld is located between Staple Tye & Bush Fair and benefits from local shops and schooling.

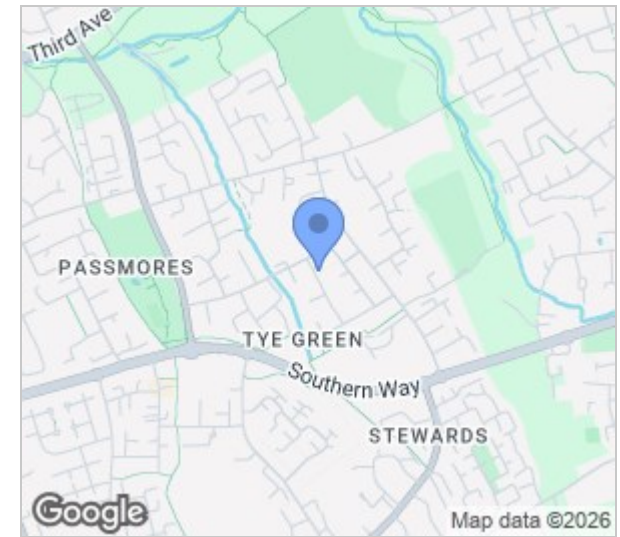


GROUND FLOOR
APPROX. FLOOR AREA 451 SQ.FT. (41.9 SQ.M.)

1ST FLOOR
APPROX. FLOOR AREA 411 SQ.FT. (38.2 SQ.M.)

REYLANDJOHNSON/AW
TOTAL APPROX. FLOOR AREA 862 SQ.FT. (80.1 SQ.M.)

Whilst every attempt has been made to ensure the accuracy of the floor plan contained here, measurements of doors, windows, rooms and any other items are approximate and no responsibility is taken for any error, omission, or mis-statement. This plan is for illustrative purposes only and should be used as such by any prospective purchaser. The services, systems and appliances shown have not been tested and no guarantee as to their operability or efficiency can be given.
Made with Metropix ©2021



Energy Efficiency Rating		Environmental Impact (CO ₂) Rating	
Current	Potential	Current	Potential
Very energy efficient - lower running costs 92 plus) A (81-91) B (69-80) C (55-68) D (39-54) E (21-38) F (1-20) G Not energy efficient - higher running costs	79	Very environmentally friendly - lower CO ₂ emissions 92 plus) A (81-91) B (69-80) C (55-68) D (39-54) E (21-38) F (1-20) G Not environmentally friendly - higher CO ₂ emissions	
England & Wales	EU Directive 2002/91/EC	England & Wales	EU Directive 2002/91/EC

These particulars, whilst believed to be accurate are set out as a general outline only for guidance and do not constitute any part of an offer or contract. Intending purchasers should not rely on them as statements of representation of fact, but must satisfy themselves by inspection or otherwise as to their accuracy. No person in this firm's employment has the authority to make or give any representation or warranty in respect of the property.

T. 01279 216216 E. info@rjestateagents.co.uk

1 Acorn Mews, Harlow, Essex, CM18 6NA www.rjestateagents.co.uk