

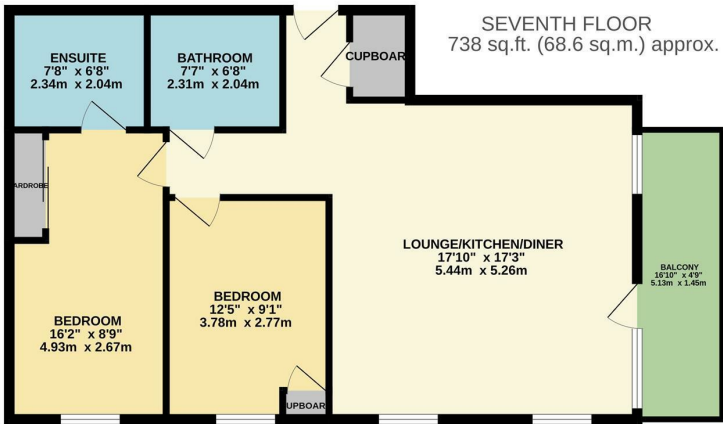
Austin House, Harlow, CM20 2UA
Guide Price £350,000



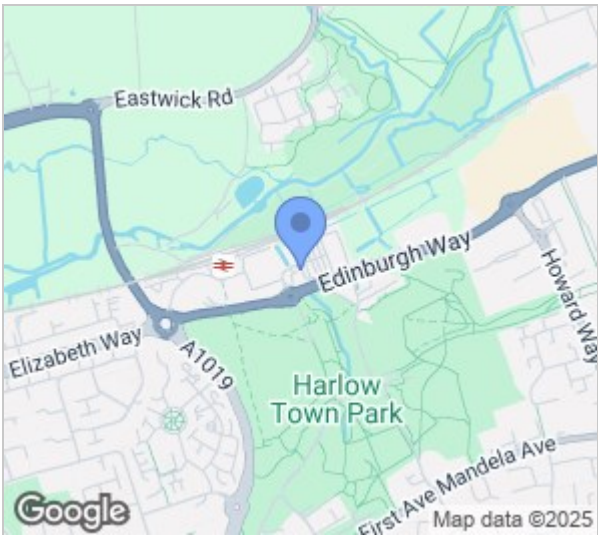
Austin House, Harlow, CM20 2UA

Guide Price £350,000 to £365,000

Located just a stones throw from Harlow Town Train Station is this three year old, two double bedroom apartment, with beautiful balcony views and gated allocated parking. Accessed by a bright lobby and lift access is an entrance hallway leading to a beautiful open plan kitchen/lounge/diner with a a range of fitted wall and base units with integrated appliances and an island breakfast bar, two large double bedrooms, the master with fitted wardrobes and an en-suite, plus a beautiful bathroom with a white three piece suite. The property is located on the seventh floor, with Austin House located within walking distance of Harlow Town Park, Harlow Town Centre and Princess Alexandra Hospital. Lease Remaining: 997 years. Service Charge: £1600 per year. Ground Rent: Zero.



AHREYLANDJOHNSON
TOTAL FLOOR AREA: 738 sq.ft. (68.6 sq.m.) approx.
Whilst every attempt has been made to ensure the accuracy of the floorplan contained here, measurements of rooms, windows, doors and any other items are approximate and no responsibility is taken for any error, omission or mis-statement. This plan is for illustrative purposes only and should be used as such by any prospective purchaser. The services, systems and appliances shown have not been tested and no guarantee as to their operability or efficiency can be given.
Made with Metreplan (2020)



Energy Efficiency Rating		
	Current	Potential
Very energy efficient - lower running costs		
(92 plus) A		
(81-91) B	83	83
(69-80) C		
(55-68) D		
(39-54) E		
(21-38) F		
(1-20) G		
Not energy efficient - higher running costs		
England & Wales	EU Directive 2002/91/EC	

Environmental Impact (CO ₂) Rating		
	Current	Potential
Very environmentally friendly - lower CO ₂ emissions		
(92 plus) A		
(81-91) B		
(69-80) C		
(55-68) D		
(39-54) E		
(21-38) F		
(1-20) G		
Not environmentally friendly - higher CO ₂ emissions		
England & Wales	EU Directive 2002/91/EC	

These particulars, whilst believed to be accurate are set out as a general outline only for guidance and do not constitute any part of an offer or contract. Intending purchasers should not rely on them as statements of representation of fact, but must satisfy themselves by inspection or otherwise as to their accuracy. No person in this firms employment has the authority to make or give any representation or warranty in respect of the property.