



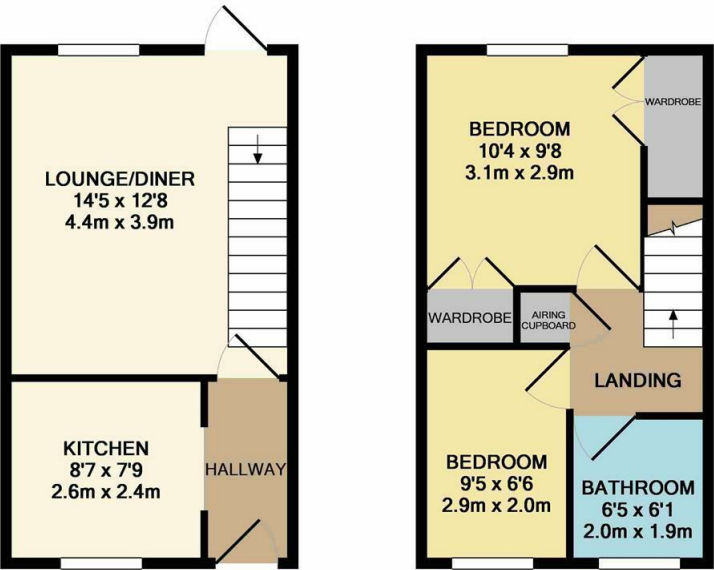
Wellesley, Harlow, CM19 5QX  
£1,450 Per Calendar Month





# Wellesley, Harlow, CM19 5QX

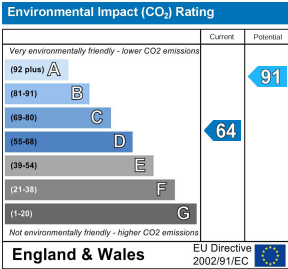
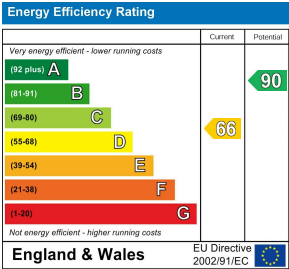
A two bedroom terraced house with allocated parking. The property comprises an entrance hall leading to a kitchen with a range of fitted wall & base level units and white goods, lounge/diner, landing two bedrooms and a family bathroom with a white three piece-suite. Outside the rear garden is low maintenance and has a rear access. The property is available NOW on an unfurnished basis. Wellesley is located on the outskirts of Harlow close to Jacks Hatch.



GROUND FLOOR  
APPROX. FLOOR  
AREA 277 SQ.FT.  
(25.7 SQ.M.)

1ST FLOOR  
APPROX. FLOOR  
AREA 277 SQ.FT.  
(25.7 SQ.M.)

RJ/WY  
TOTAL APPROX. FLOOR AREA 554 SQ.FT. (51.5 SQ.M.)  
Whilst every attempt has been made to ensure the accuracy of the floor plan contained here, measurements of doors, windows, rooms and any other items are approximate and no responsibility is taken for any error, omission, or mis-statement. This plan is for illustrative purposes only and should be used as such by any prospective purchaser. The services, systems and appliances shown have not been tested and no guarantee as to their operability or efficiency can be given  
Made with Metropix ©2019



These particulars, whilst believed to be accurate are set out as a general outline only for guidance and do not constitute any part of an offer or contract. Intending purchasers should not rely on them as statements of representation of fact, but must satisfy themselves by inspection or otherwise as to their accuracy. No person in this firms employment has the authority to make or give any representation or warranty in respect of the property.