

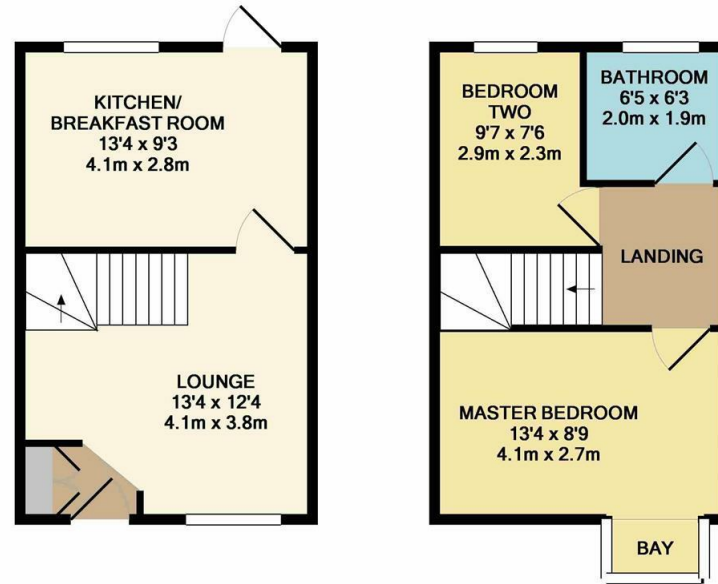


Markwell Wood, Harlow, CM19 5QU
£1,250 Per Month

2 1 1 C

Markwell Wood, Harlow, CM19 5QU

A recently refurbished two bedroom terraced home located on the westerly outskirts of Harlow. The property benefits from having parking to the rear and a newly fitted bathroom. Presented to a good standard throughout the accommodation has a lounge to the front and a kitchen/breakfast room to the rear which overlooks the garden, to the first floor there are two bedrooms and a family bathroom. The property is available now on an unfurnished basis.



GROUND FLOOR
APPROX. FLOOR
AREA 288 SQ.FT.
(26.8 SQ.M.)

1ST FLOOR
APPROX. FLOOR
AREA 300 SQ.FT.
(27.9 SQ.M.)

440
TOTAL APPROX. FLOOR AREA 589 SQ.FT. (54.7 SQ.M.)

Whilst every attempt has been made to ensure the accuracy of the floor plan contained here, measurements of doors, windows, rooms and any other items are approximate and no responsibility is taken for any error, omission, or mis-statement. This plan is for illustrative purposes only and should be used as such by any prospective purchaser. The services, systems and appliances shown have not been tested and no guarantee as to their operability or efficiency can be given.
Made with Metropix ©2016



Energy Efficiency Rating		
	Current	Potential
Very energy efficient - lower running costs		
(92 plus) A		
(81-91) B		88
(69-80) C		
(55-68) D	73	
(39-54) E		
(21-38) F		
(1-20) G		
Not energy efficient - higher running costs		
England & Wales	EU Directive 2002/91/EC	

Environmental Impact (CO ₂) Rating		
	Current	Potential
Very environmentally friendly - lower CO ₂ emissions		
(92 plus) A		
(81-91) B		
(69-80) C		
(55-68) D		
(39-54) E		
(21-38) F		
(1-20) G		
Not environmentally friendly - higher CO ₂ emissions		
England & Wales	EU Directive 2002/91/EC	

These particulars, whilst believed to be accurate are set out as a general outline only for guidance and do not constitute any part of an offer or contract. Intending purchasers should not rely on them as statements of representation of fact, but must satisfy themselves by inspection or otherwise as to their accuracy. No person in this firm's employment has the authority to make or give any representation or warranty in respect of the property.

T. 01279 216216 E. info@rjestateagents.co.uk

1 Acorn Mews, Harlow, Essex, CM18 6NA www.rjestateagents.co.uk