

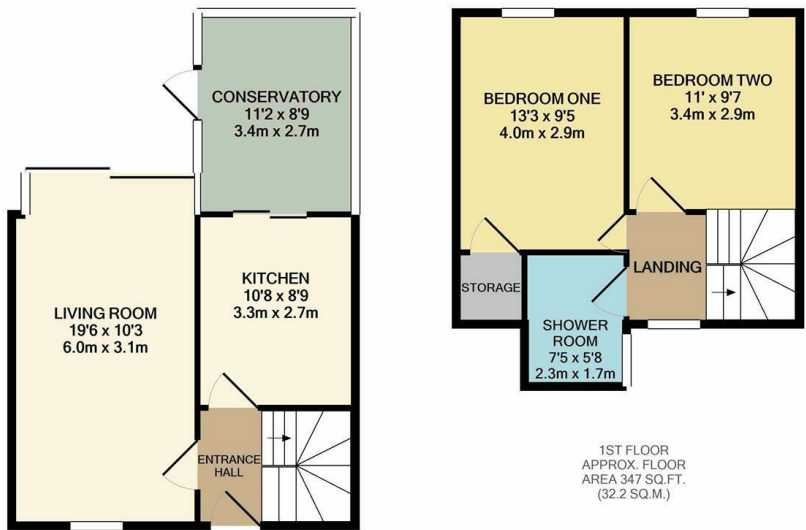


Willowfield, Harlow, CM18 6RY
£1,450 Per Month



Willowfield, Harlow, CM18 6RY

AVAILABLE early September is this well presented two bedroom family home with parking. The property has an entrance hall, lounge, modern fitted kitchen with a range of appliances, wall & base units, conservatory, two double bedrooms and a modern shower room. The rear garden is laid out patio and lawn, the front has parking for two. The property is located close to shops and schooling and on an unfurnished basis.



GROUND FLOOR
APPROX. FLOOR
AREA 446 SQ.FT.
(41.5 SQ.M.)

REYLANDJOHNSON/WF
TOTAL APPROX. FLOOR AREA 793 SQ.FT. (73.7 SQ.M.)
Whilst every attempt has been made to ensure the accuracy of the floor plan contained here, measurements of doors, windows, rooms and any other items are approximate and no responsibility is taken for any error, omission, or mis-statement. This plan is for illustrative purposes only and should be used as such by any prospective purchaser. The services, systems and appliances shown have not been tested and no guarantee as to their operability or efficiency can be given
Made with Metropix ©2021



Energy Efficiency Rating			Environmental Impact (CO ₂) Rating		
	Current	Potential		Current	Potential
Very energy efficient - lower running costs					
(92 plus) A			(92 plus) A		
(81-91) B			(81-91) B		
(69-80) C			(69-80) C		
(55-68) D			(55-68) D		
(39-54) E			(39-54) E		
(21-38) F			(21-38) F		
(1-20) G			(1-20) G		
Not energy efficient - higher running costs					
England & Wales			England & Wales		
EU Directive 2002/91/EC			EU Directive 2002/91/EC		

These particulars, whilst believed to be accurate are set out as a general outline only for guidance and do not constitute any part of an offer or contract. Intending purchasers should not rely on them as statements of representation of fact, but must satisfy themselves by inspection or otherwise as to their accuracy. No person in this firms employment has the authority to make or give any representation or warranty in respect of the property.