



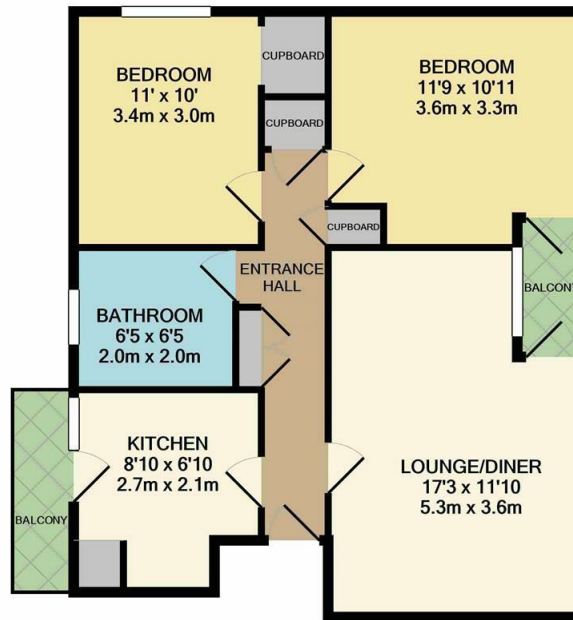
Ladyshot, Harlow, CM20 3ER
£1,000 Per Month

2 1 1 C

A set of four white icons on a dark blue background. From left to right: a bed icon with the number '2', a bathtub icon with the number '1', a sofa icon with the number '1', and a lightbulb icon with the letter 'C'.

Ladyshot, Harlow, CM20 3ER

A two double bedroom second floor flat with its own balcony. The property comprises an entrance hall leading to a lounge/diner with access to the balcony, kitchen with a range of fitted units and some white goods, bathroom with a white three piece-suite and two double bedrooms. Ladyshot is located close to The Stow which benefits from a range of local shops and schools. Available Mid November 2022 on an unfurnished basis.



RJ/LS

TOTAL APPROX. FLOOR AREA 611 SQ.FT. (56.8 SQ.M.)

Whilst every attempt has been made to ensure the accuracy of the floor plan contained here, measurements of doors, windows, rooms and any other items are approximate and no responsibility is taken for any error, omission, or mis-statement. This plan is for illustrative purposes only and should be used as such by any prospective purchaser. The services, systems and appliances shown have not been tested and no guarantee as to their operability or efficiency can be given.
Made with Metropix ©2020



Energy Efficiency Rating		Current	Potential
Very energy efficient - lower running costs			
(92 plus) A			
(81-91) B			
(69-80) C			
(55-68) D		71	79
(39-54) E			
(21-38) F			
(1-20) G			
Not energy efficient - higher running costs			
England & Wales	EU Directive 2002/91/EC		

Environmental Impact (CO ₂) Rating		Current	Potential
Very environmentally friendly - lower CO ₂ emissions			
(92 plus) A			
(81-91) B			
(69-80) C			
(55-68) D		72	83
(39-54) E			
(21-38) F			
(1-20) G			
Not environmentally friendly - higher CO ₂ emissions			
England & Wales	EU Directive 2002/91/EC		

These particulars, whilst believed to be accurate are set out as a general outline only for guidance and do not constitute any part of an offer or contract. Intending purchasers should not rely on them as statements of representation of fact, but must satisfy themselves by inspection or otherwise as to their accuracy. No person in this firm's employment has the authority to make or give any representation or warranty in respect of the property.

T. 01279 216216 E. info@rjestateagents.co.uk

1 Acorn Mews, Harlow, Essex, CM18 6NA www.rjestateagents.co.uk