



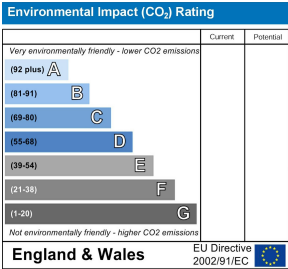
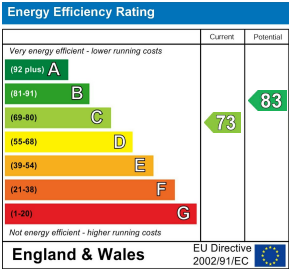
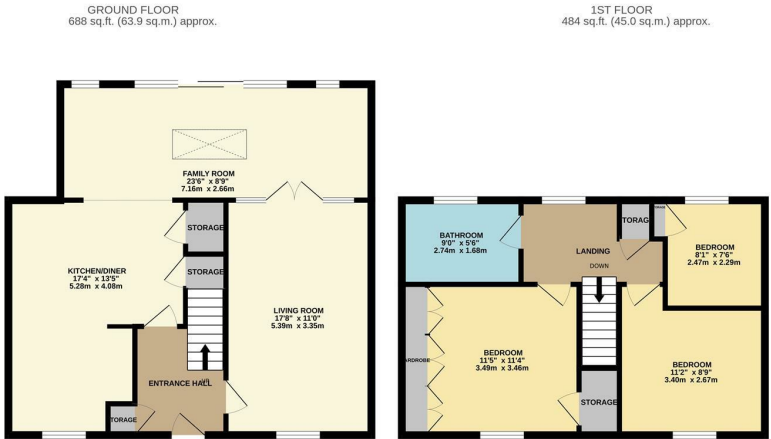
Broomfields, Hatfield Heath, CM22 7EH  
£1,800 Per Month





# Broomfields, Hatfield Heath, CM22 7EH

A three bedroom terrace home in a popular location, overlooking a small green. The property is presented to a good standard throughout and has an entrance hall, lounge, large kitchen/dining room which has a range of fitted wall and base units, oven & dish washer and there is also a full width family room overlooking the rear garden. The first floor has three good size bedrooms and a family bathroom, other benefits include off road parking, generous garden and lots of storage. Available NOW on unfurnished basis. PLEASE NOTE: There is an additional charge of £50 a month to cover the water.



These particulars, whilst believed to be accurate are set out as a general outline only for guidance and do not constitute any part of an offer or contract. Intending purchasers should not rely on them as statements of representation of fact, but must satisfy themselves by inspection or otherwise as to their accuracy. No person in this firms employment has the authority to make or give any representation or warranty in respect of the property.