



Kingsland, Harlow, CM18 6XP  
Guide Price £350,000

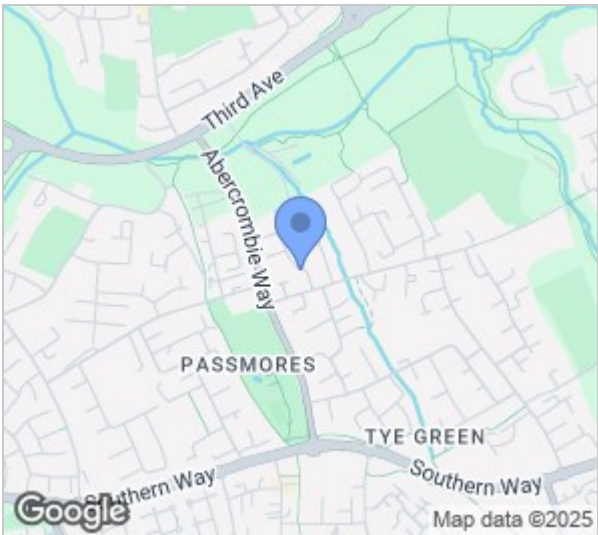
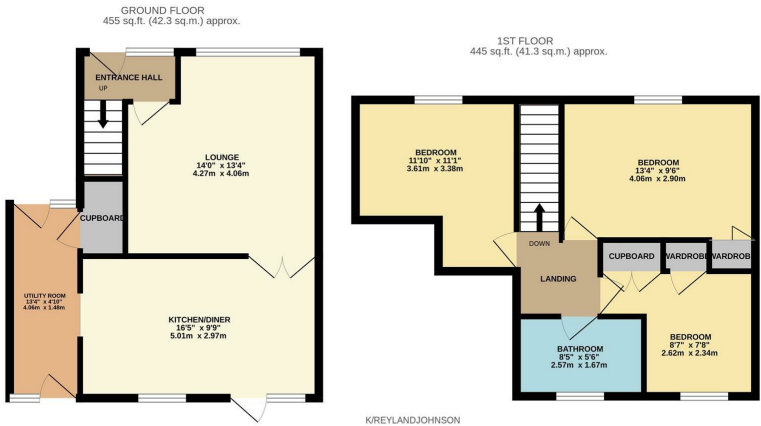




# Kingsland, Harlow, CM18 6XP

\*\*Guide Price £350,000 to £375,000\*\*

Offered with NO CHAIN is this immaculately presented, three bedroom family home, located in the popular turning of Kingsland, Harlow. As you enter there is a hallway leading to a large lounge, a beautiful kitchen/diner with a range of fitted wall and base units and a utility room, whilst upstairs there are three good sized bedrooms and a modern family bathroom with a white three piece suite. Outside, the south facing rear garden is mainly laid to lawn with a composite decked seating area, plus a summer house, with a small greed to the front. Kingsland is located between Staple Tye and Harlow Town Centre, with local shops, schools, doctors surgery and open fields within walking distance.



Energy Efficiency Rating		
	Current	Potential
Very energy efficient - lower running costs		
(92 plus) A		
(81-91) B		
(69-80) C		
(55-68) D		
(39-54) E		
(21-38) F		
(1-20) G		
Not energy efficient - higher running costs		
England & Wales	EU Directive 2002/91/EC	

Environmental Impact (CO <sub>2</sub> ) Rating		
	Current	Potential
Very environmentally friendly - lower CO <sub>2</sub> emissions		
(92 plus) A		
(81-91) B		
(69-80) C		
(55-68) D		
(39-54) E		
(21-38) F		
(1-20) G		
Not environmentally friendly - higher CO <sub>2</sub> emissions		
England & Wales	EU Directive 2002/91/EC	

These particulars, whilst believed to be accurate are set out as a general outline only for guidance and do not constitute any part of an offer or contract. Intending purchasers should not rely on them as statements of representation of fact, but must satisfy themselves by inspection or otherwise as to their accuracy. No person in this firms employment has the authority to make or give any representation or warranty in respect of the property.