

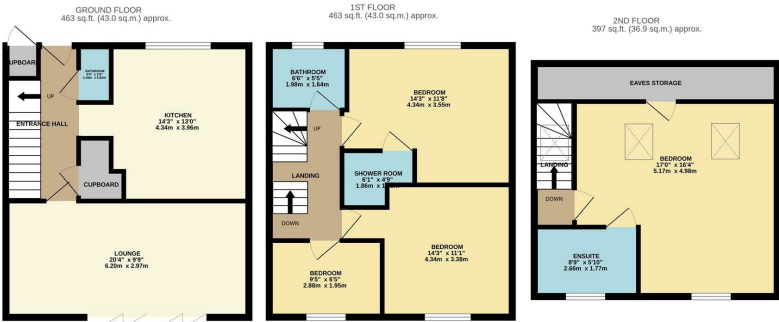


Seymours , CM19 5NQ, Harlow, CM19 5NQ
£395,000



Seymours , CM19 5NQ, Harlow, CM19 5NQ

Offered with NO ONWARD CHAIN and located in a quiet cut-de-sac is this extended four bedroom family home. On the ground floor there is an entrance hallway leading to a modern kitchen/diner with a range of fitted wall and base units, a large lounge with bi-fold doors to the garden and a cloakroom/WC. On the first floor are three bedrooms, with a shower room to the largest, plus a family bathroom with a white three piece suite, whilst on the top floor is the large master bedroom with a beautiful en-suite bathroom. Outside the rear garden is mainly laid to lawn with a patio area, shed and rear access. Seymours is located in the Katherines area of Harlow, within walking distance of local schools, shops and open fields.



S/REYLANDJOHNSON
TOTAL FLOOR AREA: 1322 sq.ft. (122.8 sq.m.) approx.
Whilst every attempt has been made to ensure the accuracy of the floorplan contained here, measurements of doors, windows, rooms and any other items are approximate and no responsibility is taken for any error, omission or mis-statement. This plan is for illustrative purposes only and should be used as such by any prospective purchaser. The services, systems and appliances shown have not been tested and no guarantee as to their operability or efficiency can be given.
Made with Metropix ©2024



| Energy Efficiency Rating | | | Environmental Impact (CO ₂) Rating | | |
|---------------------------------------------|---------|-----------|-----------------------------------------------------------------|---------|-----------|
| | Current | Potential | | Current | Potential |
| Very energy efficient - lower running costs | | | Very environmentally friendly - lower CO ₂ emissions | | |
| (92 plus) A | | | (92 plus) A | | |
| (81-91) B | | | (81-91) B | | |
| (69-80) C | | | (69-80) C | | |
| (55-68) D | | | (55-68) D | | |
| (39-54) E | | | (39-54) E | | |
| (21-38) F | | | (21-38) F | | |
| (1-20) G | | | (1-20) G | | |
| Not energy efficient - higher running costs | | | Not environmentally friendly - higher CO ₂ emissions | | |
| England & Wales | | | England & Wales | | |
| EU Directive 2002/91/EC | | | EU Directive 2002/91/EC | | |

These particulars, whilst believed to be accurate are set out as a general outline only for guidance and do not constitute any part of an offer or contract. Intending purchasers should not rely on them as statements of representation of fact, but must satisfy themselves by inspection or otherwise as to their accuracy. No person in this firms employment has the authority to make or give any representation or warranty in respect of the property.