

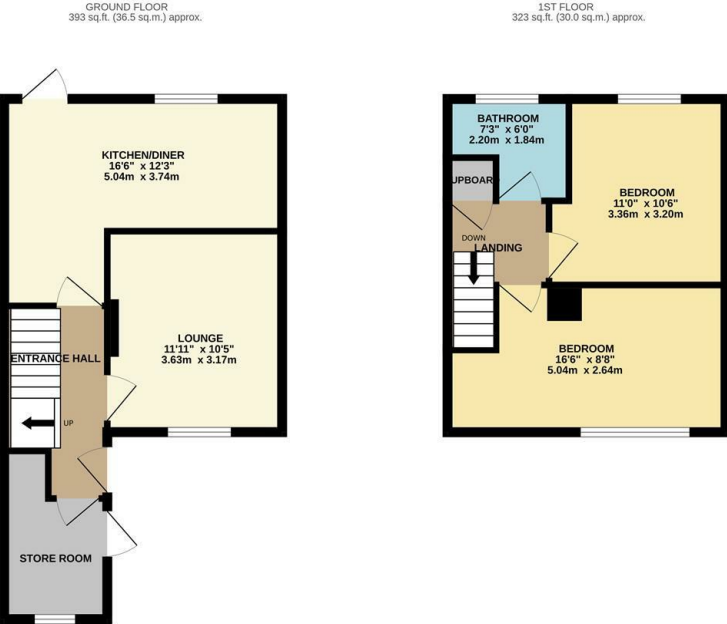
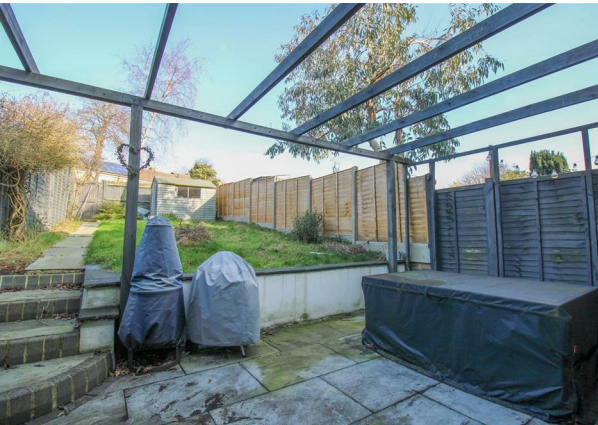


Wharley Hook, Harlow, CM18 7DS  
Guide Price £300,000



# Wharley Hook, Harlow, CM18 7DS

**\*\* (Guide Price £300,000 - £310,000) \*\*** A two bedroom terraced house with potential for driveway (Subject To Planning Permission). The property comprises an entrance hall leading to a lounge, kitchen/diner with a range of fitted wall & base level units with work-surface areas, utility/store room, landing, two double bedrooms and a family bathroom with a white three piece-suite. Outside the rear garden is laid to lawn with a patio area and rear access. Wharley Hook is a popular area located close to Bush Fair which offers local shops and schools nearby.



REYLANDJOHNSONWH  
TOTAL FLOOR AREA: 716 sq.ft. (66.5 sq.m.) approx.  
While every attempt has been made to ensure the accuracy of the floorplan contained here, measurements of doors, windows, rooms and any other items are approximate and no responsibility is taken for any errors, omission or mis-statement. This plan is for illustrative purposes only and should be used as such by any prospective purchaser. The services, systems and appliances shown have not been tested and no guarantee as to their operability or efficiency can be given.  
Made with Metropix i2025



Energy Efficiency Rating			Environmental Impact (CO <sub>2</sub> ) Rating		
	Current	Potential		Current	Potential
Very energy efficient - lower running costs			Very environmentally friendly - lower CO <sub>2</sub> emissions		
(92 plus) <b>A</b>			(92 plus) <b>A</b>		
(81-91) <b>B</b>			(81-91) <b>B</b>		
(69-80) <b>C</b>			(69-80) <b>C</b>		
(55-68) <b>D</b>			(55-68) <b>D</b>		
(39-54) <b>E</b>			(39-54) <b>E</b>		
(21-38) <b>F</b>			(21-38) <b>F</b>		
(1-20) <b>G</b>			(1-20) <b>G</b>		
Not energy efficient - higher running costs			Not environmentally friendly - higher CO <sub>2</sub> emissions		
England & Wales	EU Directive 2002/91/EC		England & Wales	EU Directive 2002/91/EC	

These particulars, whilst believed to be accurate are set out as a general outline only for guidance and do not constitute any part of an offer or contract. Intending purchasers should not rely on them as statements of representation of fact, but must satisfy themselves by inspection or otherwise as to their accuracy. No person in this firms employment has the authority to make or give any representation or warranty in respect of the property.