



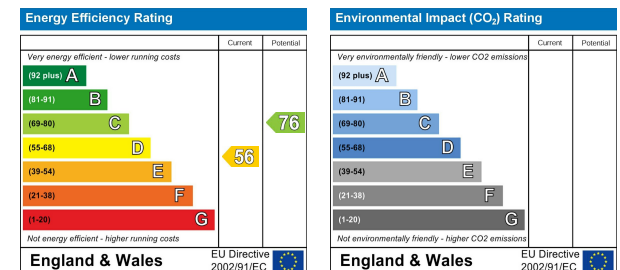
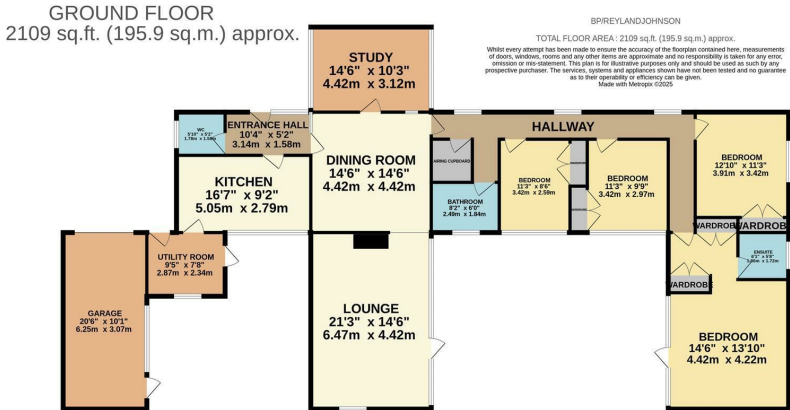
Burnett Park, Harlow, CM19 4SD
Guide Price £700,000



Burnett Park, Harlow, CM19 4SD

**** (Guide Price £700,000 - £725,000) ****

Offered with no onward chain, and with huge potential for future development is this four double bedroom detached bungalow set in 1/3 of an acre. The property was built in the 1960's and is located at the end of a quiet cul-de-sac in the highly desirable, Burnett Park, Harlow. As you enter, there is a hallway leading to a large, open plan dining room and lounge, separated by a fire place with stunning parquet floors throughout. There is a bright study, a kitchen with a range of fitted wall and base units, utility room and a cloakroom/WC. A hallway leads to the four double bedrooms with large fitted wardrobes, a family bathroom and a generous airing cupboard. The huge master bedroom has a dressing area and an en-suite shower room. Outside the expansive wrap around gardens include south facing patio, lawn and a vegetable patch and a potential build plot (subject to planning). There is also side access and access to the garage and driveway. Burnett Park is located just off Parsloe Road, close to Epping Green, with easy access to Epping underground train station as well as local schools, shops and open fields within walking distance.



These particulars, whilst believed to be accurate are set out as a general outline only for guidance and do not constitute any part of an offer or contract. Intending purchasers should not rely on them as statements of representation of fact, but must satisfy themselves by inspection or otherwise as to their accuracy. No person in this firm's employment has the authority to make or give any representation or warranty in respect of the property.

T. 01279 216216 E. info@rjstateagents.co.uk

1 Acorn Mews, Harlow, Essex, CM18 6NA www.rjestateagents.co.uk