

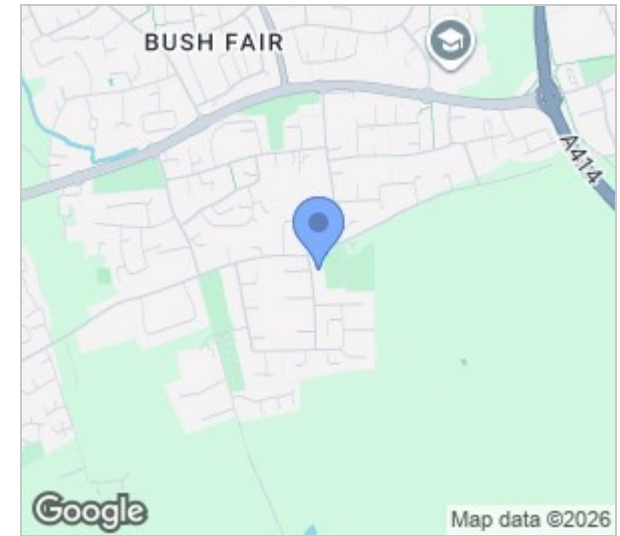
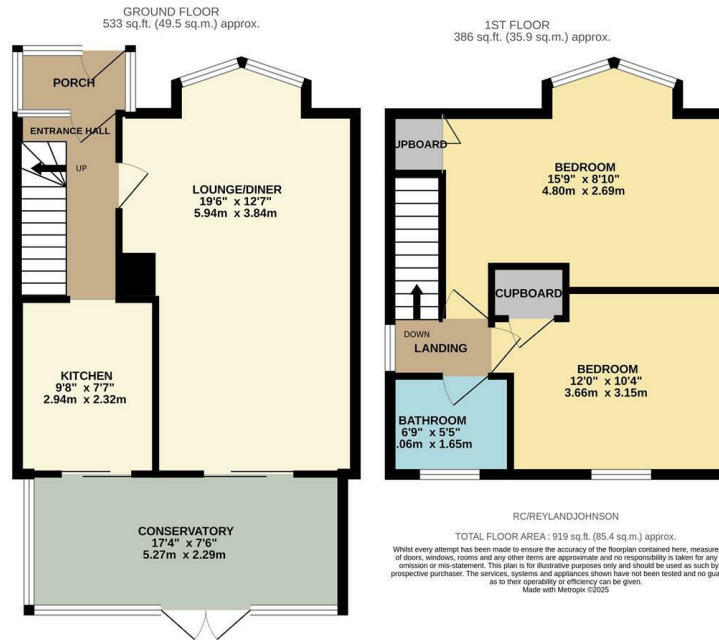


Radburn Close, Harlow, CM18 7EB  
£325,000



# Radburn Close, Harlow, CM18 7EB

Located in the sought after turning of Radburn Close, ideal for families, is this well presented two double bedroom family home with a conservatory. On the ground floor there is a porch leading to an entrance hallway, a large lounge/diner, a conservatory and a modern kitchen with a range of fitted wall and base units, whilst upstairs there are two double bedrooms with fitted cupboards and a family shower room. Outside the south facing rear garden is laid with artificial lawn and patio, with a shed and rear access, with a small green to the front. Radburn Close is ideally located with a number of local schools, shops and Latton Common within walking distance, plus the M11 close by.



Energy Efficiency Rating			Environmental Impact (CO <sub>2</sub> ) Rating		
	Current	Potential		Current	Potential
Very energy efficient - lower running costs			Very environmentally friendly - lower CO <sub>2</sub> emissions		
(92 plus) <b>A</b>			(92 plus) <b>A</b>		
(81-91) <b>B</b>			(81-91) <b>B</b>		
(69-80) <b>C</b>			(69-80) <b>C</b>		
(55-68) <b>D</b>			(55-68) <b>D</b>		
(39-54) <b>E</b>			(39-54) <b>E</b>		
(21-38) <b>F</b>			(21-38) <b>F</b>		
(1-20) <b>G</b>			(1-20) <b>G</b>		
Not energy efficient - higher running costs			Not environmentally friendly - higher CO <sub>2</sub> emissions		
<b>England &amp; Wales</b>	EU Directive 2002/91/EC	74	<b>England &amp; Wales</b>	EU Directive 2002/91/EC	80

These particulars, whilst believed to be accurate are set out as a general outline only for guidance and do not constitute any part of an offer or contract. Intending purchasers should not rely on them as statements of representation of fact, but must satisfy themselves by inspection or otherwise as to their accuracy. No person in this firm's employment has the authority to make or give any representation or warranty in respect of the property.

T. 01279 216216 E. info@rjestateagents.co.uk

1 Acorn Mews, Harlow, Essex, CM18 6NA www.rjestateagents.co.uk