

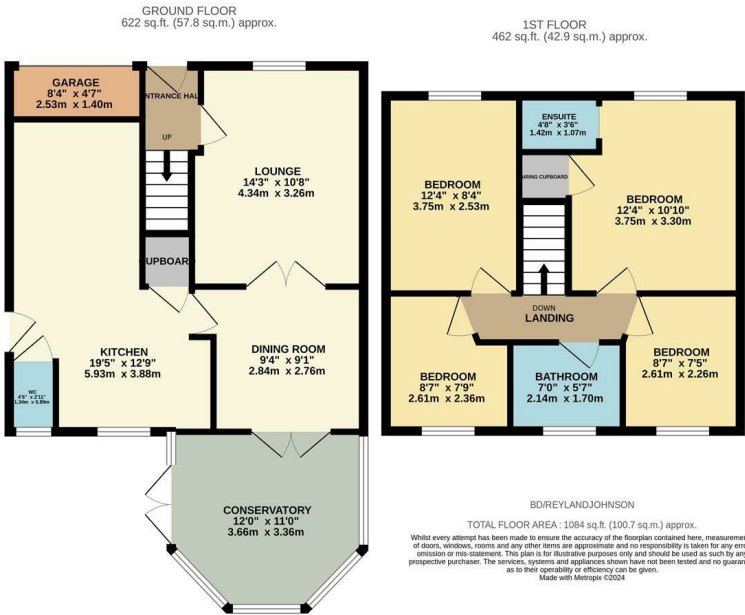


Bentley Drive, Harlow, CM17 9PA
£550,000



Bentley Drive, Harlow, CM17 9PA

Located in a quiet cul-de-sac is this immaculately presented four bedroom detached family home with a large driveway. On the ground floor there is an entrance hallway leading to a lounge, dining room, stunning kitchen which has been extended into part of the garage with a range of fitted wall and base units with integrated appliances, a conservatory (with cosytop roof) and a cloakroom/WC. Upstairs there are four bedrooms with a shower room off the master and a stunning family bathroom with a white three piece suite. Outside, the un-overlooked west facing rear garden is mainly laid to artificial lawn with a patio area, summer house and side access leading out to the newly laid driveway for three or four cars. Bentley Drive is located just off Kiln Lane, within walking distance of excellent local schools, shops and open fields.



Energy Efficiency Rating			Environmental Impact (CO ₂) Rating		
	Current	Potential		Current	Potential
Very energy efficient - lower running costs			Very environmentally friendly - lower CO ₂ emissions		
(92 plus) A			(92 plus) A		
(81-91) B			(81-91) B		
(69-80) C			(69-80) C		
(55-68) D			(55-68) D		
(39-54) E			(39-54) E		
(21-38) F			(21-38) F		
(1-20) G			(1-20) G		
Not energy efficient - higher running costs			Not environmentally friendly - higher CO ₂ emissions		
England & Wales	EU Directive 2002/91/EC		England & Wales	EU Directive 2002/91/EC	

These particulars, whilst believed to be accurate are set out as a general outline only for guidance and do not constitute any part of an offer or contract. Intending purchasers should not rely on them as statements of representation of fact, but must satisfy themselves by inspection or otherwise as to their accuracy. No person in this firms employment has the authority to make or give any representation or warranty in respect of the property.