

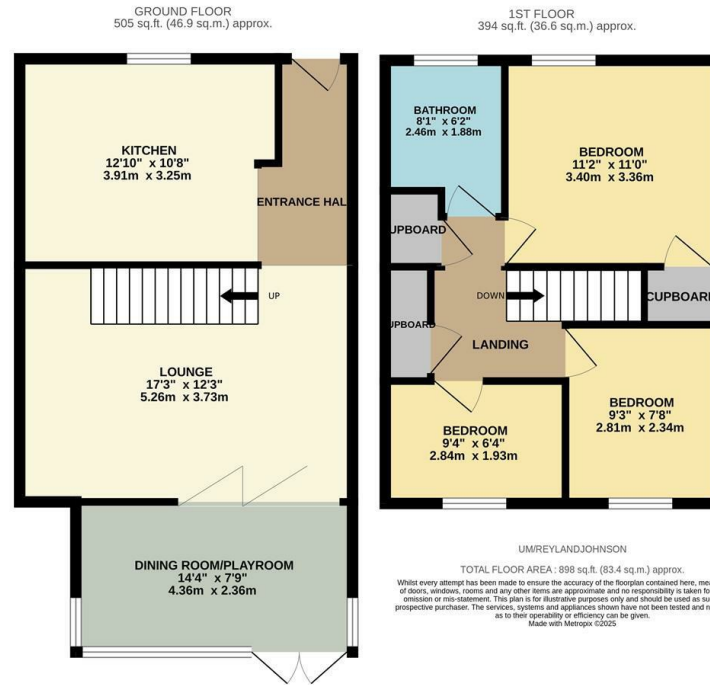
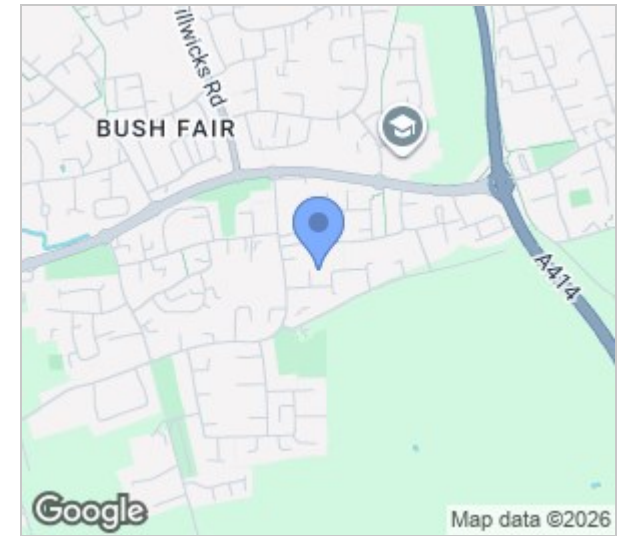


Upper Mealines, Harlow, CM18 7AJ
Guide Price £325,000

3 1 2 D

Upper Mealines, Harlow, CM18 7AJ

Located at the end of a quiet cul-de-sac in the popular turning of Upper Mealines is this immaculately presented three bedroom end of terrace family home with an outbuilding in the garden. On the ground floor there is an entrance hallway leading to a beautiful kitchen with a range of fitted wall and base units, a large lounge with bi-fold doors and a dining room/playroom, whilst upstairs there are three bedrooms and a stunning, fully tiled family bathroom. Outside, the west facing rear garden is mainly laid to artificial lawn, with a patio area, outbuilding with full electric, lighting and has been decorated, plus side access. Upper Mealines is located in the popular area of Bush Fair, within walking distance of excellent local schools, shops and open fields, plus Latton Common is across the road and the M11 close by.



Energy Efficiency Rating		Current	Potential
Very energy efficient - lower running costs			
(92 plus)	A		
(81-91)	B		
(69-80)	C		
(55-68)	D		
(39-54)	E		
(21-38)	F		
(1-20)	G		
Not energy efficient - higher running costs			
England & Wales		EU Directive 2002/91/EC	

Environmental Impact (CO ₂) Rating		Current	Potential
Very environmentally friendly - lower CO ₂ emissions			
(92 plus)	A		
(81-91)	B		
(69-80)	C		
(55-68)	D		
(39-54)	E		
(21-38)	F		
(1-20)	G		
Not environmentally friendly - higher CO ₂ emissions			
England & Wales		EU Directive 2002/91/EC	

These particulars, whilst believed to be accurate are set out as a general outline only for guidance and do not constitute any part of an offer or contract. Intending purchasers should not rely on them as statements of representation of fact, but must satisfy themselves by inspection or otherwise as to their accuracy. No person in this firm's employment has the authority to make or give any representation or warranty in respect of the property.